

# DISTINCTLY WINKLEIGH



*Working for Winkleigh*



*Merry Christmas and a Happy New Year  
to all our readers & advertisers*

**Edition 84**

**Winter 2022**

*Cover sponsored by*

*George Shacklock, MTF Contracting, Winkleigh. 01837 83325*

**The Winkleigh Society Quarterly Journal**

# BESPOAK

FURNITURE & JOINERY



From the *heart of Devon* to the *heart of your home...*



✉ [enquiries@bespookjoinery.com](mailto:enquiries@bespookjoinery.com)

☎ 01837 680 030

[bespookjoinery.com](http://bespookjoinery.com)



UPDATE • TRANSFORM • RESTORE

## Winkleigh Society Chair's Report - Nov 2022



The Winkleigh Society Committee has voted unanimously to plan to adopt full colour in as many future Distinctly Winkleigh printed editions as our finances will permit starting from now.

As the vox pop comments on page 27 show full colour is what Winkleigh residents prefer and having appreciated our recent full colour special editions.

Our advertising rates have remained the same for twenty years. During that time the number of adverts and pages in each edition has steadily increased. After a lot of debate we have decided to make a small increase in these rates to cover the increased costs of printing, postage and extra copies as Winkleigh expands.

**These new rates will come into effect from the spring 2023 edition.**

One of the core principals of The Winkleigh Society is to support and promote local businesses.

**Working for Winkleigh** is our strap line and I hope that those who advertise with us will appreciate our commitment to high production values.

*Penny Griffiths  
Chair of the Winkleigh Society*

### **The new prices will be as follows:**

Full page	Single edition	£60	4 editions (paid up-front)	£57.50
Half-page	Single edition	£30	4 editions (paid up-front)	£27.50
Quarter-page	Single edition	£15	4 editions (paid up-front)	£13.50

For further information regarding these rates please contact  
*Rachel Goldsworthy Winkleigh Society Treasurer:*  
[adverts@distinctlywinkleigh.co.uk](mailto:adverts@distinctlywinkleigh.co.uk)

## Winkleigh Community Responder News

For this edition there is some really good news for Winkleigh Parish and beyond. South West Ambulance Service Trust has provided Winkleigh's Responder Team with a 'Raizer Chair' plus training, ensuring safety whilst in use. This amazing equipment can be assembled round a person who has fallen, then by remote control is able to gently raise them back onto their feet.

Until now someone who had fallen would have to wait for an ambulance crew to arrive to assess and lift them. This leads to long waiting times owing to pressures on the ambulance service responding to higher priority calls. Now if a Community First Responder is on duty they can attend quickly, go through the necessary safety checks, assessing the patient to make sure there are no injuries and getting them upright.

In this rural area with a high percentage of older people I'm sure like me you'll agree this is going to be such an asset. So, in the case of a fall, call 999; if a Responder (which is a voluntary role) is on duty they can be dispatched to help.

*Trish Clarkson*

## Church Treasurer Needed

All Saints', Winkleigh is looking for someone to take on the role of Church Treasurer from January 2023. This is a voluntary position and the person does not need to be a member of the church. The role requires reasonable financial competence including the ability to maintain accounts and to be able to understand and meet the requirements of the Charity Commission.

The Treasurer is expected to attend most PCC (Parochial Church Council) meetings which are held around 6 to 8 times a year and to report on the church finances at the Annual Meeting. Full support and training will be given. Owing to the nature of this voluntary role we will be asking for two references and will require the Treasurer to undertake Safeguarding Training. If you are interested in helping us fulfil this valuable role, or for further information, please contact *Revd Helen Blaine* on 01837 83710, [revhelenblaine@outlook.com](mailto:revhelenblaine@outlook.com)



**MDM**  
**MID DEVON**  
**MOTOR CO.**  
Exeter Road, Winkleigh, EX19 8JJ  
Tel: 01837 83334  
[www.middevonmotor.co.uk](http://www.middevonmotor.co.uk)

## Winkleigh Society Report - Airfield Remembrance 2022

The annual Remembrance service took place at the Airfield Memorial site on Saturday 12<sup>th</sup> November. The weather was perfect for the occasion: sunny and bright with a moderate breeze. The memorial looked resplendent with flags representing the five nations that flew from the airfield. Sixty people attended ranging in age from very young to eighty plus, including many veterans. The service was jointly led by Reverend Helen Blaine and her husband Alastair, a Royal Navy chaplain. A Canadian officer always attends: this year it was Maj (RCAF) David Hardy. He read the Roll of Honour and laid a wreath on behalf of the people of Canada. SAC Simon Read represented the RAF. Other wreaths were laid on behalf of Royal British Legion, Torridge District Council, District Councillor, Parish Council, Winkleigh Society and Winkleigh Fair.

Carl Woodison accompanied the hymns and beautifully sounded the Last Post and Reveille. Photos of the occasion are by Greg Goldsworthy.

This memorial site is a tribute to Ron and Ruth Cottey and Steve Leahy who campaigned for and created this space which preserves the memory of RAF Winkleigh and the men who flew from it.

*Phil Griffiths - Hon. Sec. The Winkleigh Society*





## Robert Side RIP

It was with great sadness that we learned of the recent death in France of Robert Side.

Robert had a great interest in the calamitous First World War and was moved by the War Memorial and the Roll of Honour in All Saints' Church in Winkleigh. He began to research the lives of all those men and women of Winkleigh who fought, or were otherwise engaged, in the Great War and, with the help of the late David Purnell, created the Winkleigh Heroes website which is now available on our village website – [www.winkleighonline.com](http://www.winkleighonline.com) .

This was a mammoth task involving multiple trips to the Records Office in Kew, plus visits to many of the battlefields and military cemeteries, in France and elsewhere.

As an ex-schoolmaster, he had a great interest in the education, not only of those who fought in the Great War but also of the village children in the present time, and thus he became one of the Governors of Winkleigh Primary School. He also did some research on the history of Winkleigh School during the time it was located in the Community Centre.

We send our deepest sympathies to his devoted wife, Jolanta.

*Alan Mulcahy*

### **Winkleigh Volunteer Service**

**Volunteers take people to hospital and other medical appointments, collect shopping, take people to the shops, care homes and other essential journeys. Volunteers give their time for nothing but we do charge 50p per mile.**

**Please ring Angie: 01837 682616 or 07455365144**

**Please give as much notice as you can as our volunteers can't be expected to help at a moment's notice, we are not an emergency service**

**May I take this opportunity to thank all my volunteers for their support and help with this service and wish them a very Merry Christmas and a Happy New Year?**

**We desperately need more volunteers especially as the annual flu jab and Covid booster programme gets under way.**

**If you are interested in helping out, please give me a ring to find out more!  
Angela Findlay**

## Winkleigh Parish Church News



One of the joys of living in this beautiful village is the lack of light pollution, enabling a spot of star gazing on a clear night. I can spot a few basic constellations, know how to pick out a satellite but fail to identify any planets – even when the media tell me it’s a prime time to spot them. In many ways though, my lack of star gazing knowledge doesn’t matter, as I quite enjoy just looking up at the stars. You start off being only able to see a few and then as your eyes adjust, more and more stars appear. On a really good, clear night what feels like millions and millions of stars light up the sky and the craters on the surface of the moon are easily seen. I find it mind-boggling that these stars are themselves millions of years old and are light years away from this planet of Earth we call home. A reminder that in the great scheme of the universe humans are just a tiny part.

Those stars twinkle and shine, lighting up the dark sky and bringing some light to the darkness of night. The world itself feels quite dark right now; this winter is going to be tough and challenging for many as the cost of living increases, the war in Ukraine rages on and we become more and more aware of the effects we are having on our planet. In the midst of the seeming darkness, as a church we are preparing to celebrate the birth of Jesus, light of the world. Jesus was born in a time of political upheaval to poor parents who later became refugees in a foreign land.

**CHULMLEIGH COLLEGE**

**'Nothing But Our Best'**  
Our fully comprehensive state school, for 11-16 year olds, offers a traditional and enriching education, with results consistently amongst the best in the region. In 2022 we were the top performing non-selective state school in Devon. Every day is an Open Day, please contact us to arrange a personal tour.

01769 580215  
[www.chulmleigh.devon.sch.uk](http://www.chulmleigh.devon.sch.uk)  
[admin@chulmleigh.devon.sch.uk](mailto:admin@chulmleigh.devon.sch.uk)

His birth was marked by the shining of a new star bright in the sky, a star which led shepherds and Magi to kneel down and worship him. We continue to worship him today and to hold the light which he brings in the darkness of the world.

We have lots going on over December and the Christmas period at All Saints' and we invite you to share the light and hope which Jesus brings with us. Whether you have been to church before or never set foot through the door, believe in God or really aren't sure, can't sit still or want a snooze, are a bit noisy and need to move around or just want a quiet place to sit, then you are all welcome. We now have a prayer tree set up in the Lady Chapel where you can leave the names of any people or situations you wish to pray for and these are prayed for at our 11 am Wednesday Eucharist. If you are struggling or just need someone to talk to, please get in touch.

Two events to highlight are our **Nativity Festival on Saturday 10<sup>th</sup> December 10:00 am – 3:00 pm**. There will be a huge variety of Nativity sets to look at, refreshments and free children's crafts. If you have a nativity set which you would like displayed, please get in touch. Secondly is the **Crib Service at 5:00 pm on Christmas Eve**. You are invited (children especially) to dress up as any character from the Christmas story. Look out for our posters and flyers listing all our Christmas activities and services which are coming soon. The church is open every day 9:00 am – 4:00 pm.

May you know the peace and light of Christmas.

*Helen*

*Revd Helen Blaine (01837 83710 / [revhelenblaine@outlook.com](mailto:revhelenblaine@outlook.com))*

## **S.J.CARNE**

*Independent Family Owned  
Funeral Directors*

Established over 60 years  
Personal Attention Day and Night



**Samantha Colgrave**  
Summerhayes, Ingleigh Green,  
Winkleigh, Devon, EX19 8AT  
Email: [samjcarne@outlook.com](mailto:samjcarne@outlook.com)  
Tel: 01837 680199

Pre-arranged and Bespoke Funeral Plans  
Available



## Our Devon County Councillor Writes



Since I wrote my last article for *Distinctly Winkleigh*, we had the very sad news of the death of Her Majesty Queen Elizabeth II. For me the Queen exemplified everything that was the best about Britain and her sincerity and devotion to duty was an inspiration to me and millions of people throughout the country.

But while it has been a sad time, I am sure our new Monarch, King Charles III, will follow in his mother's footsteps and I am looking forward to the Coronation celebrations next year.

With everything that has been going on nationally and locally since the summer, it has at times felt like everything has rushed by in a blur! I have always been busy as a County Councillor but these last few months have felt exceptional, what with the ongoing issues with the Townsend Hill developments and the other planning proposals, the changes to the 5B Bus service, the ongoing recruitment of a new Chief Executive at Devon County Council, and the ongoing work to stabilise the County Council budgets for

next year.

I know the main concerns for many readers in the village at the moment are the ongoing and proposed developments at Townsend Hill. Housing and Planning are District Council issues but I have continued to work closely with District Councillor Newton, particularly when there has been some overlap with DCC.

At the time of writing, our collective frustration – be it councillor, council officer or local resident – has been the apparent 'attitude' of the developer in the construction and occupation of the new estate, along with the associated highways work.

**CHOOSE AND CUT  
CHRISTMAS TREES**

**CHULMLEIGH HILL  
CHRISTMAS  
TREE FARM**

**OPEN FRIDAYS, SATURDAYS AND SUNDAYS**

Fri 25<sup>th</sup>, Sat 26<sup>th</sup> & Sun 27<sup>th</sup> Nov  
Fri 2<sup>nd</sup>, Sat 3<sup>rd</sup> & Sun 4<sup>th</sup> Dec  
Fri 9<sup>th</sup>, Sat 10<sup>th</sup> & Sun 11<sup>th</sup> Dec  
Fri 16<sup>th</sup>, Sat 17<sup>th</sup>, Sun 18<sup>th</sup> Dec

**9.30am – 3.30pm**

Find us on the B3096 between  
Chawleigh & Chulmleigh - EX18 7FS

Traditional Norway Spruce • Low Needle Drop Nordman Fir  
Fresh Hand Made Wreaths • Stands

★ [www.johncockramchristmastrees.co.uk](http://www.johncockramchristmastrees.co.uk) ★

Tel: 07724 079733 Email: johncockram@hotmail.co.uk

Member of The British Christmas Tree Growers Association

Find us on  Facebook 

 Christmas Trees 

In particular, the traffic calming works that should have been completed before the occupation of the estate.

Discussions are still ongoing, and I think it would be an understatement to say how frustrated and disappointed I have been with the developer over their lack of communication and consultation with the community on their works. At the time of writing the County Council has been clear that utilities works carried out on Westcots Drive must see the road returned to its pre-works surface and that the traffic calming proposals on Townsend Hill must be implemented.

Leaving aside the construction issues, one positive that should come out of this is that funding has been secured to implement a 20 mph speed limit along Townsend Hill. As part of this scheme, I have also been able to secure moving the speed limit on the 'bypass' road to outside the entrance of Elms Meadow on the A3124, so that we finally correct the anomaly that the entrance to Elms Meadow sits outside the 30 mph limit.

Also, while on the subject of speed limits, concerns were expressed at the July Parish Council meeting about speeding on Torrington Road. I have taken these back to Highways and the Neighbourhood Highways Officer has committed to undertaking some new speed surveys along Torrington Road. I await the result of these surveys with interest.

While all this has been happening, another local issue that has occurred has been the changes to some of the rural bus services in Winkleigh and Torrington Rural. Throughout Devon, Stagecoach handed back their notice to run several of the subsidised routes in the County and this included the 5B bus route that ran through Winkleigh. Unfortunately some rather pre-emptive communications from Stagecoach made it appear as though the entire service was going to stop, whereas it was always DCC's intention to retender the service and have a like-for-like replacement service put in.

Through my Facebook page I was able to put out regular updates on this situation which made it clear that the bus service was going to be replaced and since then the new operator, Plymouth City Bus, has started the new 315 bus service. As ever with a change like this there will be some teething issues so if residents do have any issues with the new service please let me know.

Lastly, the biggest issue of all that I have been grappling with at County Hall has been our financial budget for this year and next. In my last article, I highlighted that we were projected to face a large overspend of up to £40 million at the end of this financial year unless we took immediate action.

This projected overspend has now been brought down to £6 million, but that has been achieved through having to make savings on existing budgets this year and postponing long term projects in IT and recruitment etc. However, the Children's Services Budget continues to be overspent and while every possible effort is being made to contain and reverse this overspend it is not easy.

Nonetheless, we should be able to balance the books for this financial year. The challenge is going to be next year, and you may already have seen local media coverage about this. At the time of writing we are looking at a projected budget gap of £75 million. Unlike a lot of central government institutions, local government has to balance our budget every financial year by law. If we do overspend, then that has to be covered from reserves or some other external income stream. If we can't, we have to issue what is called a Section 114 notice which, in effect, means the local authority becomes bankrupt.

Needless to say, a bankrupt council cannot help anyone. The £75m savings can be achieved but it will mean deep and painful cuts as the Council Leader has already outlined. This is not a problem that is unique to Devon, it is a national issue. From speaking to colleagues across the country their budget problems are similar, and many are actually worse! Cornwall's budget deficit for next year is £62 million (they are smaller than Devon), Plymouth is facing similar problems. Further afield, Norfolk County Council has a £60m budget gap for this year. Kent's is £70m.

Inflation has been the main driver for a lot of these cost pressures, with some sectors such as Highways actually experiencing hyperinflation. I hope that we will have much more clarity after the Autumn Statement and when the Local Government Finance Settlement comes through.

Nonetheless, while these are difficult and challenging times, along with the County Council I remain committed to supporting you, our residents, during this tough period. As ever, if there are any DCC issues you'd like to contact me about you can contact me on Facebook on [facebook.com/cllrsaywell](https://www.facebook.com/cllrsaywell), ring 07886 446560 or email [andrew.saywell@devon.gov.uk](mailto:andrew.saywell@devon.gov.uk).



## A Letter from King Charles III



I wrote to the King, telling him how sorry I was about the loss of Queen Elizabeth, his mother. I also baked a heart-shaped cake with the Union Flag on it in honour of her and he wrote back to me with this thank-you card and pictures.

*Martha Rhodes  
(Age 10)*



## WINKLEIGH AERIALS

0800 0930 625 Mob 07970 963450

UPGRADED AERIALS  
FILTERS TO REMOVE INTERFERENCE



City & Guilds Qualified



AXA Insured

Trade member for over 40 Years

Discount applied for Pensioners. Free surveys

Wifi - Cctv - Camera to your TV - Freesat - Dab/FM

Also: 2nd or 3rd Aerial points installed. New TV's supplied & set up



It was so very kind of you to send me such a wonderfully generous message following the death of my beloved mother. Your most thoughtful words are enormously comforting, and I cannot tell you how deeply they are appreciated at this time of immense sorrow.

*Charles*



## TEN ACRES VINEYARD CAMPING

- ⑩ FREE LOCAL WINE DELIVERIES to Winkleigh and surrounding area on Fridays 4-7pm or collect from us by appointment.
- ⑩ GUIDED VINEYARD TOURS & WINE-TASTING from 1<sup>st</sup> May - 30<sup>th</sup> September every Saturday at 4.30pm. Private group tours also available (min 6 people/the cost of 6 people). Booking essential for all tours.
- ⑩ CAMPSITE & DEVON WINE SHACK open 1<sup>st</sup> May - 30<sup>th</sup> September. For tents/small campervans. Glamping also available. Booking essential.

Order wine/gift vouchers and book glamping/camping on our website. Contact us for vineyard tour booking info and availability.

W : [www.tenacresvineyardcamping.co.uk](http://www.tenacresvineyardcamping.co.uk) E : [tenacrescamping@hotmail.co.uk](mailto:tenacrescamping@hotmail.co.uk)  
T : (01837) 83892



## The Loaded Dice or Tilted Balance in favour of Developers

**Torrige Councillor Peter Christie** explained in **The North Devon Journal** [August 11] why Developers will always win the arguments over the '5 year land supply' and, if they are foiled, why they are so confident that, if taken to court, they will win.

Torrige and North Devon District Councils have developed a local plan with land identified for housing in order to meet the Governments quota. However, when **Eric Pickles** was housing minister [2010-2015] he decreed that if totals were not met [which happens with land banking] then the "un-built" numbers had to be added to the next 5 year tranche.

Councils cannot force developers to build houses to their time-scale and so targets never seem to be met "so developers quote this 5 year land supply - and then apply for areas outside the development boundaries - such as in Winkleigh."

**Developers Maths and how it works. [Aug 18th North Devon Journal].**

When Developers commission their viability studies they ring-fence 20% profit.

They provide very little for surgeries, schools and affordable homes.

**BENCHMARK AVERAGE FIGURE - COST OF LAND £100,087 per acre.**

Land has often been purchased earlier at a much lower cost.

**This notional cost is then set against the cost of public benefits.**

*Penny Griffiths*



*By Ruby Cowan (age 10)*

## FOWS Fireworks Evening - 2022

The Friends of Winkleigh School (FOWS) would like to thank everyone who attended the fireworks evening on Friday 4th November. It was an enjoyable evening, alongside raising funds for the school. These funds are used to heavily subsidise school trips and enrichment activities for the children so the support of the Winkleigh Community is always very much appreciated.



*Photo by Greg Goldsworthy*



*The Winkleigh Singers*

Registered Charity  
Number  
117121

**The Winkleigh Singers will be performing  
A TRADITIONAL FESTIVAL OF NINE LESSONS AND  
CAROLS** on Sunday 18<sup>th</sup> December at 6:30 pm – 7:30 pm at  
St Michael and All Angels Church, Great Torrington.

The Winkleigh Singers with David Read MMus FRCO on the  
organ.

Carols for all to join in singing and some fresh carols plus  
Christmas favourites from the choir.

All welcome.

# Heating, Cooking & Living.

- Stoves & Fires • Flues, Chimneys & Stove Installations
- Seasoned Logs • Range Cookers • Spares & Accessories



To see one of the largest selections of stove, fires and range cookers in the South West, many of which are live and on display, visit Rangemoors. Whether you want to add warmth and atmosphere to your living space or cook up a storm in the kitchen, we have the perfect appliance for you and your home.

Telephone 01837 680068  
[www.rangemoors.co.uk](http://www.rangemoors.co.uk)



## Winkleigh Parish Council

Dear all,

The Chair and I would like to begin this report by wishing you all the very best for the coming season of festivities – it is our hope, and the Council's, that you have the opportunity to enjoy the delights of autumn and winter, and avoid as much as possible its problems. We would like to make you aware again of the help that TDC and DCC are able to offer with emergency funds and the like to make the pinch a little less severe this season. If you would like confidential help on these matters, do not hesitate to get in touch about it.

Although it has not been long since our last report, the Council has nonetheless been busy! We have recently been sorting out the defibrillators in the Parish, and making sure they are up to scratch, etc. I am pleased to say that, despite issues with our insurance, and through eventually conclusive communication, we have secured their future use for years yet to come. We have also been working on some smaller projects, regardless of the financial squeeze all councils are under at the moment; for instance the Vice-Chair and the Clerk recently scarified and reseeded some verges in the village, with a view to making them homes for wildflowers next summer, and thus promoting biodiversity in our community. These little things are the foundations of parish councils, or should be, and the foundations of communities like ours all over this island home which we share.

We have, as ever, been keeping a vigilant eye on the progress and regress of construction in the village, and will continue to do so going forward. Recent events have not gone unnoticed, and many on the council are deeply concerned with remedying problems caused. As ever as well, we would encourage you to come along to our meetings and get involved in the small yet important part we have to play in the process of local government!

For now, we wish you all the best for the coming days, may your hearths be warm and your hearts content.

*Alex & Benjamin (Chair & Clerk for WPC)*

### **Storage containers to rent near Winkleigh**

*20 foot x 8 foot x 8 foot high*

Long or short term rentals, from £20 per week

For more details please call Julian on 07947 877284

or e-mail [julian.tolley@btinternet.com](mailto:julian.tolley@btinternet.com)

**W H T Letting**



## Dowland Punches above its Weight



stand three thick black guttering candles. The blackened flowers then gradually transition into a vivid sea of red poppies enveloping a giant white plaster of Paris hand cradling the curled up form of a young soldier.

Sue is at pains to stress that it is all a community effort. The thousands of poppies in the churchyard and the red curtain flowing from the tower, and the tea and cake provided for the 3,000 plus visitors was only possible because of the hard work, ingenuity and whole-hearted support of the village community and the Reverend Susan Oldham.



Dowland's story of their three lost soldiers of WW1 has resonated far beyond its hamlet and county bounds. National and international media have been intrigued by the stand-out storytelling and artistry of the poppy curtain cascading from the medieval church tower of St Peter.

Sue Dunn has covered all bases as she reveals the details of those young mens' lives; from birth to school and their working lives. Visitors walk and talk around the church through staged rites of passage: absorbing the details of the rocking cradle, the desk, blackboard and archive photographs of their Dowland classmates. The working lives of Arthur, William and George are brought to life by a tableau of farm tools and a sheaf of corn.

Conversations are provoked, stories shared as we contemplate the domestic and working detail of their brief lives. But you are brought up sharply by the battlefield scene. It is unflinching: black and stark; with barbed wire snaked over anti-tank barriers, behind which

The specially designed and locally crafted bench will now stand as a lasting memorial to Arthur, William and George in Dowland Churchyard.

*Penny Griffiths*



## **Your Parish Council Needs You!** **Why we must have an election in May**

Winkleigh Parish is blessed with loads of people who contribute to the community: the Church, our three centres, Christmas and summer fairs, Distinctly Winkleigh, football club, local schools, markets, young famers, Winkleigh Volunteers, etc. the list is endless and thank you and bless you all.

Unfortunately, when it comes to the Parish Council, we seem content as a community to let people sleepwalk into the role without proper scrutiny, instead of nominating sufficient candidates to warrant a formal election which gives us the opportunity to put a cross against their names (or not)

Apart from three current councillors, elected last November following the cemetery debacle none of your existing representatives have been elected and I am told this has been the case for years if not decades. I think it is important for our community and local democracy that we have an election, not people who have walked in unopposed or co-opted. Winkleigh Parish Council makes decisions on **your** behalf and spends **your** money so it is important that you choose who these individuals are.

For whatever reason one joins a council it doesn't mean one is automatically fit for service. We have had councillors who seldom attend meetings; come unprepared or do little in between meetings. We have some representatives who find the



**Local Family Run Residential  
Sales & Lettings Agent**

**Call us for a FREE  
no-obligation Valuation of your Property.**

**01837 83393**

**info@howesestates.co.uk www.howesestates.co.uk**

**Sell your property from 0% and no upfront fees\***

\*terms and conditions apply

paperwork and reading it not to their taste, but ask them carry out a practical job and they are the first to volunteer. It takes all sorts of people to form a Parish Council and we need lots of skills and interest groups. Furthermore, we need people who are selfless, objective, accountable, open, honest and reliable. Most importantly we need individuals who are active workers and have loads of integrity.

This is why I think it is important that our local leaders are elected. **You the parishioner should be choosing who represents you and spends your money.**

As Winkleigh grows in size we need a confident, competent Council to take us forward, one who will spend your money wisely, who will represent your interests. Currently we have councillors who can only be contacted by email, immediately disenfranchising many people without internet access. How can you listen to the wishes of the community if nobody is able to get hold of you?

**So come on people of Winkleigh and Hollocombe, you deserve better.** To show that we believe in local democracy, let's have a number of people who put themselves up for election so that we have enough councillors and ones chosen by **YOU!**

*Angela Findlay*

*Please note this is a personal view and not one necessarily shared by other members of WPC.*

*If anyone wants to know more about the role of councillor, please feel free to contact me on 01837 682616.*

**SWF** **Southwest Fixings Ltd**

**Agricultural & Building Supplies Trade Counter**

- Oils and Adblue
- Fencing Materials
- Workwear & Boots
- Calor Gas
- Animal Health
- Batteries
- Animal Feed
- Nuts & Bolts
- Hydraulic Hoses
- Timber
- Drainage
- Guttering
- Plumbing
- Tools
- Paint
- Tractor & Implement Parts
- Fixings & Fastenings

...PLUS MANY MORE!

*Delivery available!*

Tel: 01837 83492  
Email: sales@southwestfixings.co.uk  
Website: www.southwestfixings.co.uk  
Visit: Beechlea Industrial Est. Winkleigh, EX19 8DH

Open: Monday - Friday (7:30am - 5pm)  
Saturday (8am - 12noon)



## The Tallet Café – Thank you



Thank you to everyone who has visited us these past few weeks. We have been blown away with your support.

We have settled into our new venture and we are loving the uplifting vibe that it brings to have so many new faces popping in for coffee, breakfast, lunch and cake. You can also call into our cider shop while you are here to see the whole range of Sam's Ciders,

gifts, chutneys and of course to sample the range. Our cider shop will be offering our ever so popular Christmas hampers from mid-November and we now have our Christmas range in stock.

We will be updating our café menu soon to include some homemade soups and winter warmers.

Our Cider shop is open Monday to Saturday 9 am to 5 pm, Sunday 10 am to 1 pm.

Our Café is open 9 am to 3 pm Monday to Friday, Saturday 9 am to 2 pm.

*Kylie Beardon*

**SAM'S CIDER**  
THE PROPER DEVON CIDER

Celebrating 100 years of cider being made on site

Makers of award-winning proper Devon cider

[www.winkleighcider.co.uk](http://www.winkleighcider.co.uk) info@winkleighcider.co.uk Follow us on Facebook & Twitter

You can visit us at Winkleigh Cider Company, Western Barn, Hatherleigh Road, Winkleigh, Devon, EX17 8AP  
Onsite gift shop and local produce

## Christmas is coming!



We have just 6 more weeks of the shop being open until Christmas! Lovely locally-made gifts and decorations have started arriving in the shop along with some especially delicious Christmas Shortbread and Caramel Syrups for the Barista Coffees and Winter Warmer teas.

Our winter opening times are now Tuesdays to Saturdays 9.30 am until 5 pm (Thursdays 'til 6 pm) until Friday 23<sup>rd</sup> December when we close the doors until the New Year. We'll stay open into the evening on Saturday 3<sup>rd</sup> December for Winkleigh's Christmas Fair 5-8 pm and the big switch-on so do please pop in and see us in Bissett's Garage on Exeter Road to listen to the Christmas Carols and perhaps enjoy a hot drink whilst having a nose at our range of gifts, Christmas

planters, handmade Wreaths and locally grown Christmas Trees from John Cockram near Chulmleigh.

It has been an incredible year since moving to our new premises! So much has happened. As we wound up the last of our weddings in spring and summer we experienced Storm Eunice and the consequential power cut – a big thanks to Bev & Simon Gale lending us a camp stove to make emergency coffee for those that braved the high winds! We had diesel shortages making it difficult to deliver flowers and then the national shortage of delivery drivers meant that UK grown flowers from further afield often arrived at random times!



Coffee, Cake, Seasonal Flowers, Plants & Eco Gifts

All under one roof @ Bissett's Garage on Exeter Road Winkleigh EX19 8HW

☎ 07870166985 📧 [enquiries@catkinblooms.co.uk](mailto:enquiries@catkinblooms.co.uk) @CatkinBlooms

Pop in & say hello, we are open Tuesdays to Saturdays 9.30am-5pm

We have a Friday Flower Club, seasonal workshops and events, pop in to ask for details



The Catkin Blooms team were amazing at managing the Mother's Day madness in March, whilst I had Covid and thankfully things settled down once the weather improved. Since then we've celebrated British Flowers Week, the Queen's Jubilee (congratulations to Jan & Dave Ovenden who won our Queen's Quiz!), floral demonstrations at RHS Rosemoor during the Summer heatwaves, dressed the well for Winkleigh Fair Week, sponsored a Winkleigh FC football match, had visits from charity fund-raising groups on bikes, loads of

international visitors on touring motorbikes and even a visit from a family called Winkleigh from the USA!

We installed new reclaimed doors to be more accessible, sourced a second-hand high chair and changing station to be more family friendly, and sold local dog ice to help in the Summer heat, as we welcome dogs into the shop café. We've also held several skills-based workshops including cooking, baking, sewing and dyeing and as we head into December we'll be running Christmas Wreath making workshops, please pop in and enquire if you'd like to find out more or email [enquiries@catkinblooms.co.uk](mailto:enquiries@catkinblooms.co.uk).

COP 27- the meeting of world leaders to discuss climate change is just starting this



November and highlights the need to consider the environment especially this Christmas. We are trying to do our bit at Catkin Blooms and source gifts that are locally made and plastic free with the world in mind. The moss used in our wreaths is sustainably sourced and our Christmas Trees are locally grown, all our furniture is repurposed and reclaimed. We try to support as many other local businesses as we can and supply our delicious No. 1 Coffee from local roasters in Okehampton, milk in recycled glass from Taw River Dairy in Sampford

Courtenay, cakes in cardboard from Peck & Strong in Crediton and glass-bottled Apple Juice from Winkleigh and locally produced honey from Broadwoodkelly!

Please pop in and take a look and we hope you get to enjoy a very Merry Christmas, from all of us at Catkin Blooms and thanks for your continued support.

*Cath Kenny*



## Posties Thank-you Tea

Posties and proof-readers enjoyed a slap up tea at Fiona's in September. As these volunteers are a vital cog in The *Distinctly Winkleigh* machine, The Winkleigh Society committee decided several years ago that an annual thank-you tea was in order by way of a thank-you.

After a two year hiatus (courtesy of Covid) it was great to be able to resume this tradition.

Eighteen of us gathered at Fiona's: veteran posties, newbies and proof-readers. Delicious sandwiches, cake and a bottomless tea pot was the order of the day. (see photos on the adjacent page).

We raised a cup in thanks to Ron Fletcher and John Williams who are both hanging up their postie shorts after many years delivering copies to the residents of Kings Meadow and Southernhay.

It was a real tonic to meet up again and show our appreciation of the out-reach team responsible for checking and delivering *Distinctly Winkleigh*.

*Penny Griffiths*

### **LORRAINE – MOBILE FOOT HEALTH PRACTITIONER – DipCFHP**

**CALL NOW TO BOOK AN APPOINTMENT  
07841 719690**

**PROFESSIONAL & FRIENDLY SERVICE, OFFERED IN THE  
COMFORT OF YOUR OWN HOME.**

**OVER 10 YEARS EXPERIENCE – ABLE TO TREAT  
LONG/THICK/ FUNGAL NAILS, PAINFUL CORNS, IN-GROWING  
TOE NAILS, CALLUS, VERRUCAS, CRACKED HEELS, GENERAL &  
DIABETIC FOOTCARE**

**Fully qualified and insured**







**Tom Wilkins**



**07792419427**



**wilinstom18@gmail.com**



- ✔ Fully Qualified Local Electrician
- ✔ Fully insured
- ✔ Re-wires, kitchens, bathrooms, property extensions and new builds, outside lights, testing, consumer unit upgrades and other domestic and commercial work undertaken

**Please get in touch for a free quote!**



**All aspects of pest control undertaken for your domestic, agricultural and commercial requirements throughout Devon.**

**BPCA Qualified. Experienced Friendly Technicians. Correctly Insured.**

**Please call Paul - 07714239656 or Ken - 07814306548**

**Email: [paul@greenvalleypestcontrol.co.uk](mailto:paul@greenvalleypestcontrol.co.uk)**

**Web: [www.greenvalleypestcontrol.co.uk](http://www.greenvalleypestcontrol.co.uk)**



## **VOX POP: Feedback on Distinctly Winkleigh Full Colour Edition 83 from the Village Hall Markets in October and November**

- What a fantastic and Classy Edition!
- Very well thought out, Colour appreciated
- It's much more appealing to children and young people in colour, a colour picture captures attention
- Nice to see inside pictures in Colour. Always look forward to receiving it through the door
- Colour pictures break it up and make it easier to read. There's so much information in it.
- Can you have a Children's page please? Maybe a quarterly colouring competition?
- There's the psychological aspect of this colour cover, it makes you want to touch it.
- You will get more Advertiser support if it's in Colour, I keep them now they have Colour
- I love the Historical Articles, it's social History, Local History in the making
- Nice to have colour for special occasions.
- Good Edition, feels nice, very professional 'Look'.
- Colour's fine, so is black and white ( which is easier to recycle) maybe keep colour for special occasions
- Very informative, I like the full colour copy
- This is a Historical copy, lovely colour, Great record of Village Life
- Much more professional in colour
- I'm not bothered either way, I can re-read them online where they are always in colour
- Colour's great if affordable, breaks it up and more likely to appeal to the younger generation, everything they experience nowadays is in colour
- I like it both in colour and in black and white, either way.
- Everything stands out more in colour
- I keep all of them and re-read from time to time, they're collector's items.
- The children were more interested in looking at this edition
- Very much like the colour. If it can be afforded, it's a good thing
- Absolutely needs to be in colour! Whatever the cost!
- Like the colour but too many articles about planning. It's an important subject but 4 in one edition is too much
- Adverts stand out better in colour
- Why don't you advertise and regularly display your archive again?

*Compiled by Rachel Goldsworthy*

RECRUITING NOW



Acorn is an independent co-educational school which provides learning and supportive environments for students from Key Stage 2-4 with Social, Emotional, Mental Health, Autism Spectrum Conditions and/or Specific Learning Difficulties.



I am incredibly honoured to introduce myself as the new head of **Acorn School, Winkleigh**. I joined the school in June and officially took over the very large boots of **Abbie Heard**. Abbie has a new and exciting role within the Phoenix family and visits us all often.

The first half term at Acorn has been full of laughter, learning and creativity. Our students have settled back into school with its new timetable wonderfully and are enjoying developing their love of reading by accessing all sorts of fascinating fiction and non-fiction books, audio books, creating stories and developing characters. The lower school has been investigating the Frozen Kingdom with large penguins popping up in each classroom as part of their topic work. The students have been learning about woolly mammoths, sabre tooth tigers, penguins and polar bears and imitating the feel of a real-life penguin within their art projects.

Students across both the upper and lower school are enjoying accessing their bespoke timetables with a range of activities on offer everyday including; music and media technology, design and technology, climbing, forest school, ICT, science, PSHE, cooking, offsite sports, swimming, Tubers, farm and many, many more.

The school therapy dog, Tripp has also been a regular attendee, with students accessing learning outside of the classroom by supporting his Guide Dog training schedule. The students are looking forward to the Guide Dog tea party this month and already baking lots of biscuits and cakes. Our students have also been learning about evolution as they care for the school stick insects daily.

Our upper school students have been busy learning about Black History Month, creating topical bullying posters, completing work on sustainability at Braunton Burrows, working towards their employability skills awards, completing mentoring activities, researching work placement opportunities and preparing to study towards their GCSE's in Maths, English and Science.



Our school community is exceptionally important to us and we would love for you to be involved! We are looking for donations for our Christmas fayre, such as games, books, decorations, clothes that could fit boys and girls aged 8-16. Now that our school development plans are almost finished with the addition of new POD's we would be happy to show the community our incredible school environment, please contact me to arrange a tour and hear and see all the wonderful things our students get up to!

Teaching Assistants £17,526 - £18,905 & Teacher roles £25,000 - £31,500 per annum

To apply, please visit: [phoenixlearningcarecareers.co.uk](https://www.phoenixlearningcarecareers.co.uk)  
Call: 0330 135 8 158 or Email: [recruitment@plcl.org.uk](mailto:recruitment@plcl.org.uk)



## Winkleigh Christmas Fair - 2022

Plans for the 2022 Christmas Fair are in the advanced stages as we write this on 3<sup>rd</sup> November, with no major disasters. Yet!! We're really looking forward to the evening's festivities and hope for some favourable British weather. The rain of last-year's fair didn't stop us having fun but be sure to wrap up warm to prepare for the worst and hope for the best!!! It's been great fun arranging this event although we laughed so hard at the last committee meeting we had to stay late just to catch up!!!

This is a family event, so we'd like to encourage as many people as we can to attend, young and old, and we will do our absolute best to make sure there is something for everyone! Although there may be some deviations from the programme below, this is what you can expect on **Saturday 3<sup>rd</sup> December** from 5 pm – 8 pm in the main Village Square:

- 5.15 pm Christmas lights countdown and switch-on,
- Santa to arrive in style before retiring to his grotto with his elves,
- The fabulous Crediton Town Brass Band will kick off the festive tunes,
- The wonderful talents of the Winkleigh Singers Choir will see us through from 7 pm,
- There will be 25 market stalls,

**LOCALLY BARN - REARED AND OVEN - READY  
CHRISTMAS TURKEYS,  
CHICKENS & GEESE**



**MICHAEL WESTERN - MIDDLECOTT FARM  
BROADWOODKELLY Tel: 01837 83381  
LOCAL DELIVERY AVAILABLE**

- A BBQ, mulled wine and mince pies,
- A children's activity stall and possibly some snow from above!

This entire event is staged by volunteers so everything you see on the day has been arranged on donated time and effort. From the market stalls and lights, to the handsome BBQ chefs and cheery mulled wine servers, raffle prizes, the tree and much much more. You all know who you are. We owe a massive thank you to everyone who has helped us so far and we will owe even bigger thanks to many more on the day itself....but for now - thank you so much. To you and my fellow Winkleigh Fair Group members....you are legends!!!

While you read this, if you feel that you would like to join in and be part of our small but fabulous organising team, please do get in touch with us and we'd be delighted to welcome you: contact [gareth\\_cowan@hotmail.com](mailto:gareth_cowan@hotmail.com)

So please please please support our wonderful village and come along for some fun and traditional Christmas tunes and who knows....you might get to see Santa along the way!!

*Love and Christmas Hugs from the Winkleigh Fair Organising Group*

***Now here are some photos from last year to get you in the right mood!***



***Hair Salon***

***Ladies – Gents –  
Children***

***(Established – 1989)***

***For All Your***

***Hairdressing/Barbering Requirements***

***Wedding & Prom Hair, Ear Piercing***

***We Specialise & Use***

***Milk Shake & Organic Colours & Products***

***Free from Silicones, Fragrance & Parabens***

***Opening Times: Tues – Fri 9 am – 5 pm & Sat by Appointment***

***Exeter Road, Winkleigh - Telephone 01837 83004***



**HC Joinery**

Bespoke Joinery Services

Harry Colgrave

Joiner

---

All aspects of joinery work undertaken.

Doors, windows, repair to neglected doors and windows, door canopies/porches, panelling and restoration projects.

[hcc2010@hotmail.co.uk](mailto:hcc2010@hotmail.co.uk)

01837 83911/07517110668



Summerhayes, Ingleigh Green,  
Winkleigh, EX19 8AT



Winkleigh

**01837 83229**

## Electrical Contractors

- Rewires, New Builds, Extensions
- Consumer Unit Upgrades
- Showers, Cookers, Heating
- Internal / External Lighting
- Sockets & Telephone points
- CCTV & Networking
- Testing & Inspection (inc PAT Testing)







# Winkleigh Christmas Fair

**Saturday 3rd December**

**5pm - 8pm**

**Winkleigh Square**

---

Market Stalls

Santa's Grotto & Elves

Mulled Wine, Cider & Mince Pies

BBQ

Children's Activity Stall

---

**Traditional Christmas Carols with**

**Crediton Town Brass Band**

**&**

**The Winkleigh Singers Choir**



**Kinangop Cattery**

Kinangop Farm  
Winkleigh, Devon EX19 8DN

07748 608 308  
kinangopcattery@gmail.com  
www.kinangopcattery.co.uk

Pauline Metcalfe



## What's On Diary – December 2022 – February 2023

*All dates & details are believed to be correct at the time of going to press.  
Please send details of your events to [articles@distinctlywinkleigh.co.uk](mailto:articles@distinctlywinkleigh.co.uk).  
For up to date details (if DW has been notified of any changes) see the online  
diary at [www.winkleighonline.com](http://www.winkleighonline.com).*

<i>December</i>	
3 <sup>rd</sup> from 10 am - Noon	Okehampton Choral Society 'Coffee & Carols' at Okehampton Church Hall (next door to 'Toast')
3 <sup>rd</sup> from 10 am - Noon	Winkleigh Fair Christmas Market, Village Hall
3 <sup>rd</sup> from 5 pm – 8 pm	Winkleigh Christmas Market
7 <sup>th</sup> from 2 – 4 pm	Memory Café – Community Centre
10 <sup>th</sup> - 10:00 am-3:00 pm	Nativity Festival, Winkleigh Parish Church
18 <sup>th</sup> – 4 pm	Nine Lessons & Carols, Winkleigh Parish Church
18 <sup>th</sup> – 6.30 – 7.30 pm	Winkleigh Singers to lead Festival of Nine Lessons and Carols at St Michael's Church, Great Torrington
21 <sup>st</sup> from 2 – 4 pm	Memory Café – Community Centre
24 <sup>th</sup> at 5 pm	Crib Service, Winkleigh Parish Church
24 <sup>th</sup> at 11.30 pm	Midnight Mass, Winkleigh Parish Church
25 <sup>th</sup> 9.30 am	Christmas Day Eucharist, Winkleigh Parish Church
<i>January</i>	
4 <sup>th</sup> from 2 – 4 pm	Memory Café – Community Centre
7 <sup>th</sup> from 10 am - Noon	Winkleigh Village Hall Market (first Saturday monthly)
18 <sup>th</sup> from 2 -4 pm	Memory Cafe – Community Centre
21 <sup>st</sup> from 2 pm – 5 pm	Britannia 'Behind the Scenes' Open Day, located behind Airfield Garage. Seckington Cross
<i>February</i>	
1 <sup>st</sup> from 2 – 4 pm	Memory Café – Community Centre
15 <sup>th</sup> from 2 – 4 pm	Memory Café – Community Centre

## Winkleigh Allotments – How about growing your own?

The Winkleigh Growers are a friendly group of committed gardeners who cultivate plots on a fenced site next to Winkleigh Sports Centre. There are several whole and



half plots available at the moment at a cost of £60 / £30 per year. We have water and wheelbarrows on site and vehicle access for most of the year. If you are interested in joining us and have the time and the energy to keep a tidy and productive plot, please contact Catherine Knight on 07816 608819 for a chat and a site visit.

## Winkleigh Village Hall News

After a hectic period when we firstly celebrated the Platinum Jubilee of HM Queen Elizabeth II then, within weeks, mourned her sad passing and welcomed King Charles III to the throne, the last few weeks have, politics and energy aside, seemed relatively quiet. The use of the Village Hall continues to thrive with both regular and new or single event customers making full use of all facilities. The new, fully-fitted, kitchen and the refurbished meeting room/bar are hugely popular.

The hall committee has recently purchased new cinema equipment, including a portable projector, screen, and sound bar with the intention of relaunching its cinema evenings. It is planned that these will be held in the meeting room with room for circa 30 viewers. This will provide a more intimate and warmer setting without the acoustic issues that continually impacted upon the listening experience in the larger hall. Watch the Facebook pages and notice boards for more details.

Christmas is almost upon us, and the hall will again be hosting a magnificent market between 10 am and 12 midday on Saturday 3<sup>rd</sup> December. There will be live seasonal music on the stage, a large number of stalls to cater for all your festive needs, refreshments including mulled wine and mince pies, plus the usual teas, coffees and cakes, and a huge raffle, the proceeds from which will be donated to All Saints' Church to assist in its wonderful efforts to help those in need within its parish.



The hall committee is seeking people from within the community who might like to join our ranks in helping to run and manage the hall. Anyone reading this who feels that they would like to help is invited to contact me – **Tony Aston** – on **01837 83248, 07946 490967** or at [tonyaston1953@gmail.com](mailto:tonyaston1953@gmail.com). We would love to hear from you!

Even though all of us are having to take measures to ensure that our forthcoming energy bills are not too eye-watering, your hall committee wishes everyone a merry Christmas and a peaceful New Year. We look forward to seeing you in 2023.

## From Our Torrridge District Councillor



I, like all of you, have been bewildered and angry at the changes and instability in central Government over these last few months. All at a time when we are facing a very serious security threat from Russia's invasion of Ukraine with its consequent energy crisis and when we were already suffering from the long-term impact of the COVID pandemic on our economy (the biggest financial "hit" the country had taken since the

last World War). Let's hope that our central Government quickly stabilises and gets on with steering the country through these unprecedented times.

I say this because I want to reassure everyone that my work on Torrridge District Council is not influenced in any way by national politics and I will continue to represent everyone in the Ward in any of the areas that Torrridge has responsibility.

As you will know we are currently involved in a protracted and difficult round of planning applications for two large developments around Winkleigh. I am in regular contact with planning officers, the Parish Council and local residents, trying to help find a way forward that meets the planning officers' requirements to comply with national planning regulations, whilst also satisfying those of local residents.

Not easy; however I firmly believe that the amount of new development, both current and planned, is disproportionate to the size of the village. I have exercised my right to "call in" both applications which means that if officers recommend approval then the arguments for and against the applications (including contributions from residents) will have to be heard by the Council's Plans Committee in a public meeting. Watch this space!

We have recently been informed of a new government initiative called the Rural England Prosperity Fund. Torrridge has been awarded nearly £1m and grants can be given to capital projects that will benefit the rural economy – agricultural diversification being one. More details can be found on the Torrridge website.

As always, please feel free to contact me if you want to discuss a matter concerning the Ward or if you need help with any of the services that Torrridge provide.

*Cllr Simon Newton MBE*

*Tel: 07943 830220 – Email: [councillor.newton@torridge.gov.uk](mailto:councillor.newton@torridge.gov.uk)*

**COVERING ALL EXCAVATIONS AND GROUNDWORKS  
BOTH LARGE AND SMALL PROJECTS AT COMPETITIVE PRICES**



**MARTIN PARISH CONTRACTING**

**FULLY INSURED  
HEDGE-TRIMMING FLAIL &  
CIRCULAR SAW  
FIREWOOD PROCESSING.**

**CALL MARTIN ON 07817 46420  
[WWW.MPCONTRACTORS.CO.UK](http://WWW.MPCONTRACTORS.CO.UK)  
FACEBOOK: MARTIN PARISH  
CONTRACTING**

## The Britannia Sailing Trust Update

The hard work and total dedication of the Britannia Sailing Trust team has paid off. In the last update it was mentioned that the Trust had won one award and been put forward for another at the annual National Transport Trust award ceremony. Well, the Trust did get the second award - the Peter Allen award, given to very few recipients, acknowledging them as the Best of the Best of this year's transport restoration projects. A double award is a true reflection of the effort that has been put in to her restoration by the team, several of whom are Winkleigh people.



Vicki receiving the award



**The Trust is proud to say that the Winkleigh Community has been of great support which is hugely appreciated.** Over the four plus years of Britannia's stay in Winkleigh work has continued through cold winters and sweltering summers and she is now looking like a proper ship. The work is hard, heavy and relentless. Two local young people who joined the Britannia work effort as volunteers, Abi and Seb, have developed great skills and abilities while working on Britannia. Seb, who took a carpentry course during lockdown, which was difficult to say the least, is now leading some jobs on Britannia, has grown significantly under the expert tutelage of Sam and Andy and is well on his way to becoming a qualified boat builder.

Seb's determination is incredible. All the time he's been working on Britannia he has travelled one and a half hours by bus each way every day to get to and from work.

Abi, who also joined as a volunteer, has gained great skills in boat building and is at present on board the sailing ship Tamar on a seafarer placement, learning the ropes of traditional sailing. I believe she's also been offered an Atlantic crossing next year.





Recently the Iddlesleigh Ladies visited Britannia to have a ‘behind the scenes’ look at her with cups of tea and cakes and a good poke about this magnificent, double award-winning ship. Look out for the next Open Day on 21<sup>st</sup> of January 2023.

Britannia is aiming for launch in the Autumn of next year; If everything goes to plan, she’ll be leaving Winkleigh and heading for Exeter and the sea. Keep an eye out for further reports in Distinctly Winkleigh for news of our launch date in 2023. It will be a sad day when she leaves Winkleigh as she has been welcomed and supported by this generous community. We, the Trust, will be sad to be leaving but at the same time excited for her future, back at sea, sailing over the waves as she should be. There will no doubt be a hootenanny of a double themed party. The end of the ‘Winkleigh chapter’ and the beginning of the ‘back to the sea chapter’.



As usual volunteers from the Britannia Trust will be at the monthly market in Winkleigh where you can pick up sea-salty things and help with this award-winning local project. We will also be at the Winkleigh Fair on the 3<sup>rd</sup> of December and will be having a ‘Behind the Scenes’ open day at the site between 2 pm and 5 pm on January the 21<sup>st</sup> 2023.

Monthly donations from as little as five pounds a month are very welcome. Anyone donating regularly between now and the proposed launch in the Autumn next year will be offered a chance to sail on her. Details of all donation options are given at [Donation Options - Britannia \(britanniasailingtrust.org\)](http://britanniasailingtrust.org).

***Thank you Winkleigh from the trustees and volunteers of the Britannia project.***

## Local Logs



Dry seasoned hardwood  
All stored under cover & delivered in Chulmleigh & surrounding area.

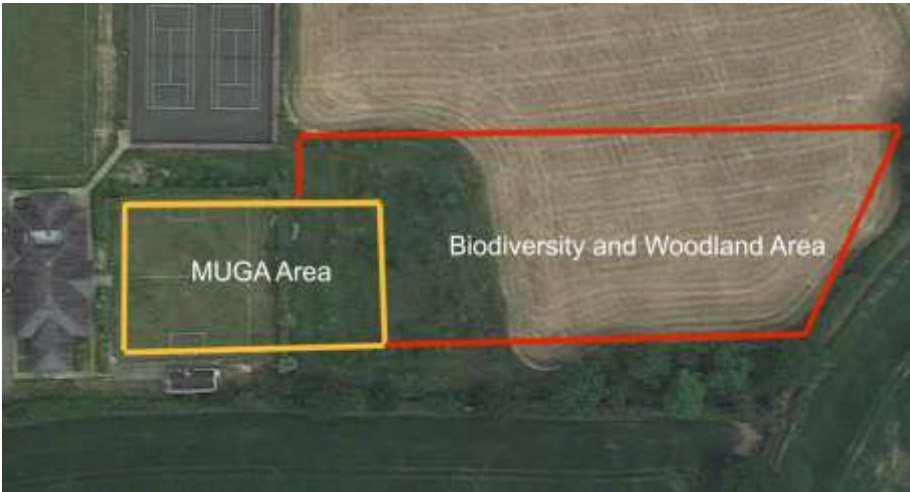
Truck Load	£90
Double Load	£180
Trailer Load	£280
Net of Logs	£5
Net of Kindling	£5

Martin 07817 464420 parish@btinternet.com  
www.mpccontracts.co.uk



## News from WWMRFF (Sports Centre)

Great news from the Trustee's of WWMRFF! We are shortly to extend the area currently used by Winkleigh Youth Division Football Club (The old Bowling Green) so that we can apply for a grant to set up a MUGA (Multi Use Games Area). If our plans come to fruition, we aim to offer new activities on the playing area such as Walking Football and Netball/Volleyball facilities. The existing bio-diversity area would be moved back, and we are looking at developing the area behind this and extending out to the boundary – more of this for the next edition of DW.



We are also currently in negotiations with Winkleigh Football Club to alter the setup of our changing area and shower facilities so that both WFC and their away visitors can use a more modern and comfortable facility. Once altered, the changing areas and showers could then be used by all those involved with sports in the centre.

There have been a few changes during the year with a number of new Trustees coming on board.

Our current board of Trustees are: *Mike Wilson – Chairman,*  
*Sue Taylor – Treasurer, Greg Goldsworthy – Secretary,*  
*Roy Bannister, David Woollacott, Ron Indge, Alan Jacobs*

If you wish to contact us, please email: [wwmrff@outlook.com](mailto:wwmrff@outlook.com) which will forward your email to all the Trustees.

**The Trustees would like to wish you all a very happy and safe Christmas.**



Now only  
**£895\***  
for a fully  
fitted electric  
garage door.

Gotta get a Garolla.



Garolla garage doors are expertly made to measure in our own UK factories, they're strong and solidly built. The electric Garolla door rolls up vertically, taking up only 8 inches inside your garage, maximising valuable space. Our experienced installers will fit your new door and they'll take away the old one too, so there's no mess.

Give us a call today and we'll come and measure up **FREE** of charge.

**GAROLLA**  
ROLLER  
SHUTTER  
DOORS 

[www.garolla.co.uk](http://www.garolla.co.uk)

CALL US TODAY ON  
**01884 720 017**  
MOBILE:  
**07537 149 128**

**LINES OPEN 7 DAYS A WEEK**

\*Offer valid for openings up to 2.6m wide & including 2 remote controls, 55mm white slats, internal manual override.



## Local Winkleigh Taxi

**4&8 Seater Vehicles Available**  
Local or Long Distance, Airports, Stag  
Nights



Local  
Reliable  
Safe

Wayne  
**Brad Cars**

**07846389921**

[waynejeens@yahoo.co.uk](mailto:waynejeens@yahoo.co.uk)

Seasons greetings to all our customers

Competitive Rates



## Hollocombe Community Group Update: November 2022

Hollocombe Hut and the Hollocombe Facebook site, with 112 members, continue to be valuable sources of support and information.



The main event since last time was the wonderful Halloween celebrations with amazing and imaginative window and garden displays. The Hollocombe witches made a return visit braving the torrential rain. On this page are some pictures of Halloween and thanks to Helena for decorating our Hut for Halloween and Bonfire night. If you have any articles, news stories or photos, please email me on [pebbles256@gmail.com](mailto:pebbles256@gmail.com) as I would love to include them in future Hollocombe Community Group quarterly updates 😊



Stay safe and take care!

Sue Dally  
(7 November 2022)

## Winkleigh Youth Division Football Club

Winkleigh U10's played their first two Devon FA league games on 1<sup>st</sup> October at North Tawton football ground against Heavitree U10 Hawks and Alphington Youth U10's. Although Winkleigh were not able to come away with a win, the effort and enthusiasm that they all put into the game was encouraging. In their next game against Lymptone Wildcats they were able to score their first league goal and their playing technique has improved greatly with every game that they have played.



Our training sessions for both the U8's and U10's will now both take place on a Monday evening with the U8's taking the 17.00-18:00 slot and the U10's from 18:15-19:15. There are hot drinks, snacks and seating available for those coming to watch.

A big shout-out to all the trainers, support and admin staff without whom none of this would be possible. We are always looking for people to help even if it's only to pump up a few balls or helping to set up the floodlights.

We are also always looking for new players to join our coaching sessions.

### Contacts:

**Liz Jones – (Treasurer and U9/10 Administrator)**

Email: [Lizjones@hotmail.co.uk](mailto:Lizjones@hotmail.co.uk) - Tel: 07752 967283

**Leanne Wonnacott – (Secretary and U9/10 Administrator)**

Email: [winkleighyfc@outlook.com](mailto:winkleighyfc@outlook.com) - Tel: 07740 104554

**Rachel Dunn – (U7/8's Administrator)**

Email: [rmdunn83@gmail.com](mailto:rmdunn83@gmail.com) - Tel: 07779 513204

**Greg Goldsworthy - (Chair)**

email: [wydfc\\_gg@outlook.com](mailto:wydfc_gg@outlook.com) - Tel: 07813 158568



# Open Book Construction & Developments Ltd

**General Building Works  
Period & Listed Building Renovations  
Maintenance & Repairs**

**For a free, no obligation estimate, please call:**

**01837 83890 • 07541 002017**

**info@obcd.co.uk www.obcd.co.uk**



A stylized blue logo consisting of a curved line above a square with a smaller square inside, resembling a roof or a stylized 'A'.

## AIRFIELD

**General Maintenance  
& Repair Garage**

- MOTs • Vehicle Diagnostics
- Clutches & Cambelts • Brake & Brake Repair
- General Maintenance • Air Conditioning
- Servicing • Bodywork & Restoration



**01837 682 678**

**www.airfieldgarage.com**



## Rocket & Rose - New Location



Winkleigh-based independent small business, Rocket & Rose has opened its new doors at Beechlea Industrial Estate. Owner Gemma Ansell-Nelson has been running the company for 10 years now with the help of her three children, and is very happy to be opening this new space in Beechlea. Gemma says "It's so lovely to be open and see the local people of Winkleigh and the surrounding areas again. The feedback on the shop and business has been amazing."

**Rocket & Rose** will be offering regular Sewing Courses in the new Studio upstairs above the

shop. There will also be Children's T-Shirt printing parties being held here and 'Sewcial Sessions' every other Tuesday where you can come along and use the space for your crafting projects and 'Sewcialise' with other like-minded crafters. Children's Sewing and Intermediate Sewing Classes are also being planned, as well as guest workshops for other crafts including silver, pottery and glass fusing.

**ROCKET**  
CLOTHING CO.

PRINTED EMBROIDERED  
CLOTHING & MERCHANDISE  
FOR BUSINESS LEISURE

**0800 622 6711**

**WWW.ROCKETCLOTHING.CO**  
**HELLO@ROCKETCLOTHING.CO**

**BEECHLEA INDUSTRIAL ESTATE**  
**WINKLEIGH EX19 8DH**

Gemma's other company, **Rocket Clothing Co** provides printed and embroidered workwear and is also situated at the new shop, with a dedicated showroom area of workwear samples for you to see.

The shop and showroom are open Monday to Saturday, with the children's parties taking place at weekends.

For more information, the shop is situated at the very front of Beechlea Industrial Estate. Drive in and turn left, then first right and right again and look for the pink gnome outside the shop.

[www.rocketandrose.com](http://www.rocketandrose.com)

[www.rocketclothing.co](http://www.rocketclothing.co)

Email: [info@rocketandrose.com](mailto:info@rocketandrose.com) or  
[phone](tel:01837682827) 01837 682827



The Shop



The Workshop

# i Clean Devon Window Cleaning

**WINDOW CLEANING, GUTTER CLEARANCE & CLEANING, FACIAS, SOFFITS & CONSERVATORIES.**

**Call Paul @ 07514 – 740712 for a no obligation quote.**

Email [paul@icleandevon.co.uk](mailto:paul@icleandevon.co.uk)



[WWW.FACEBOOK.CO/ICLEANDEVON.CO.UK](http://WWW.FACEBOOK.CO/ICLEANDEVON.CO.UK)

Covering Winkleigh/ Chumleigh/ Dolton/ Roborough/ Hatherleigh & surrounding villages.



**The PC Geek** *your computer...*  
*not working got a virus*  
*Collecting dust in the corner*  
**call Andy Carnegie**

PC repairs  
 Health checks                    £48 first hour  
 Upgrades                            then  
 Web Design                        £12.00 every 30min  
 Office/admin services  
 New and refurbished computers  
 Established 15 Years



[www.tpcgeek.co.uk](http://www.tpcgeek.co.uk)

Tel: 07903 566861

Email: [tpcgeek@hotmail.co.uk](mailto:tpcgeek@hotmail.co.uk)



VISA

TUE-FRI - 9AM - 5PM  
 SAT - 9AM - 4PM  
 SUN - 10AM - 3PM  
 CLOSED MON



**PET, HOME &  
 GARDEN SUPPLIES**

THE OLD AIRFIELD  
 WINKLEIGH  
 EX19 8EZ  
 NEXT TO JONESY'S CAFE

**YOUR ONE-STOP ESSENTIAL SHOP!**



• WILD BIRD FOOD • PEANUTS • FAT BALLS • TREATS  
 • PET FOODS • LITTERS & BEDDING



• TOILETRIES • BIN LINERS • CLEANING PRODUCTS • STATIONERY  
 • COOKWARE • DIY PRODUCTS • PAINTS & BRUSHES • GREETINGS CARDS



• COMPOST • BARK CHIPS • FENCE & WOOD CARE • PLANTERS  
 • SEEDS • PLANT FOOD • TOP SOIL • PEST CONTROL • SMOKELESS FUEL



NOW STOCKING...

• HERBS • SPICES • DRIED FRUIT • PULSES • FLOUR • OATS

...AND SO MUCH MORE!!!

**POP IN AND SEE US - WE'D LOVE TO SEE YOU!**

**TEL: 01837 680084**

## Feeding the Birds this winter

Many of us have feeders hanging in the garden but we may be getting concerned about Avian Flu and noticing a serious decline in bird numbers recently.

I do a weekly count for the Garden Bird Watch scheme run by the British Trust for Ornithology (BTO) (not the same as the RSPB count every January). I record on-line the largest number of each species of birds 'using' my garden each week. You can find this on the BTO website which is currently free to join. In the last few weeks (writing on 1<sup>st</sup> November) I have recorded the lowest number of species I have ever recorded here: only 14 species in the week. Generally my figures would be c.24 in summer and c.19 in winter. I used to have a large Crabtree but had to have it taken down due to honey fungus, so I have lost Treecreeper; also Woodpecker and Nuthatch are now unusual. As this has been a very fruitful season the birds do not need to risk coming into our gardens while there is plenty to eat in the woods and hedgerows.

There is no evidence yet that Avian flu is reaching inland garden birds, but we are strongly advised to report dead birds and don't touch. There is now clear evidence that the finch disease Trichomonosis is significantly worse in urban / village areas, which is attributed to the bird feeders. **Please, if you continue to feed the birds, do wash and disinfect your feeders very regularly.**

**Should you feed the birds at all?** There are different views here. I continue to do so all year or my annual statistics would be unreliable. However one view suggests not to feed except in the coldest part of the year, say January to May, when the



**SERVICES FOR SMALLHOLDINGS**  
Fencing • Hedgerow Services • Woodland Management

A range of services to improve, enhance and restore your green areas

**SORREL**  
Countryside Management Services  
Working with Nature

Contact: Philip Cribb  
BSc (Hons) PGCE  
**07815 133576**  
phil@sorrelcms.co.uk

www.sorrelcms.co.uk •  @SorrelCMS  
Venton Farm • Drewsteignton • Devon EX6 6PG

The advertisement features three small images on the right side: a wooden gate leading to a field, a white fence along a path, and a pile of harvested hay or straw.

hedgerows are exhausted and then there are the chicks to feed. The concern is that if birds get so used to being fed they will lose the ability to find food in the wild. However the evidence seems to be that very few birds are 'tied' to one garden - though the gang of 20 House Sparrows in my garden is an exception. In one careful study the maximum number of blackbirds seen in a garden was four; actually 79 blackbirds used the garden, but no more than four at any one time.

If you are going to continue feeding keep moving the feeders, but give them plenty of shelter, next to the hedge, not out in the middle of the lawn - unless you are keen on Sparrowhawks. Generally predation is much less of a problem for birds than starvation. I am a product of the Baby-boom generation, when human beings had lots of children to make up for losses in the war; birds do the same, but they cannot breed if starving.

If you want to distinguish bird songs better, I recommend the App called Merlin, which is free and comes from Cornell University. Switch on, and it lists all the birds it can hear, including those too high-pitched for my old ears. Occasionally you get a really stupid record, maybe a bird only known in Brazil, but usually it is reliable. Only yesterday it made me look up to find the Redwing it was recording. Thoroughly recommended.

*Peter Howard*

# Adam<sup>of</sup> Eden Tree Care



A friendly, family run company aiming to provide a range of high quality arboricultural services to our customers trees.

Services include:  
Tree Removals / Dismantles  
Tree pruning, reductions, thinning, shaping and dead wood removal  
Hedge trimming  
Stump grinding  
Tree planting

All work is insured to £5million, complies with relevant British standards and is carried out by appropriately trained and equipped professional arborists

**CALL NOW** for friendly, professional advice and to arrange a **Free no obligation quote**

TEL: 07398268877  
Email: [adamofedentrees@gmail.com](mailto:adamofedentrees@gmail.com)  
Check us out on facebook and instagram: [@adamofedentrees](https://www.facebook.com/adamofedentrees)





## Winkleigh YFC Distinctly Winkleigh Update



Autumn has always been a busy time for Winkleigh Young Farmer's Club and this year has been no exception. September saw our Annual General Meeting supported by a good turnout of new and old members and club leaders. Last year's club officers obviously did a splendid job as everyone is staying in their roles for the following year. At least we've outdone the Conservative government!



Shortly after, 3 members attended a 'Call my Bluff' competition in Holsworthy. Luke Stevens and Amber Brook both excelled at this and made it through to the county round.

Members were also grafting throughout September at weekends and in evenings, getting our Wild West float ready for the carnival season. The hard work paid off as we won 'Best YFC Float' and second best in show at South Zeal Carnival. Look out for us at Dolton, Hatherleigh and Holsworthy carnivals all coming up soon. I'd like to extend my thanks to the Pearce family for the kind use of their shed and to Jack Luscombe for driving the float at all of the carnivals.





We also held our annual New Members meeting recently. It was great to see several new faces at the meeting and fun was had all round with some very good team-building games. We always welcome new members throughout the year so don't feel that you've missed the boat!

At the end of October, James Pearce and I represented the

Tarka Group at Exeter Cathedral, decorating the pillars ready for the harvest festival ceremony. Central to our display, were sheaves of Winkleigh thatching reed.

For the approaching festivities, we have several events such as our club Christmas meal and the county Christmas ball, where we might partake in a pint or two! The calendar is also filled with events such as farm tours, quizzes and several Christmas challenges where we normally expect a great attendance from members.

For more information about our club or membership, feel free to call me on 07498 972991 or find our Facebook group – Winkleigh YFC.

*Tim Laarveld, Social Secretary*

## **RAY SQUIRE CONTRACTING WINKLEIGH**

Hay-making, Grass mowing, Turning, Rowing up,  
Small bale baling & Flail Topping, Hedge Trimming  
Muck-spreading, Chain-Harrowing

**Give us call on – 07912316679**

## Winkleigh Memory Café



We are all very happy to announce that we have, once more, received funding from the “Big Lottery”. This award, of course, means that we are funded for another year. But above all, it means that our small band of

volunteers have the backing of our specialist, Trish Burke. She has worked, over the years, through most of the problems that are facing our members and their carers.

We are primarily open for people suffering from various types of Memory Loss together with their carers. But, over the last couple of years – post Covid – we have seen the results of people becoming isolated, losing their confidence, feeling at times like being a prisoner in their own home and this can sometimes lead to mental ill-health.

Thanks to our volunteers, we hope to bring some fun, some joy, special events and keep our members on their toes with our regular “movement to music” sessions. All this, of course, before a cup of tea and a piece of cake!



Our activities have not gone unnoticed as we have recently received two extremely generous donations for which we are very grateful.

### Need Help In The Garden?

RHS Qualified, Experienced Gardener

All Aspects of Garden Maintenance

Planting Ideas

Year Round Reliable Service

Call Maxine on 01837 680039 or 07815 309023



THE SHIFTERS

Spirebourne Limited

Liquid Waste Disposal and Drainage Co.

### EMERGENCY CALL OUTS

Septic Tank/Cess Pool Emptying – Any Size  
Grease Traps  
Drain Blockage Clearance  
Various Commercial Liquid Waste Disposal Servicing  
CCTV Drainage Surveys  
Pump Repairs & Renewals  
Installation of Septic Tanks & Sewage Treatment Works  
Mantair Units

**FREEPHONE 08000 855 185**

spirebourne@hotmail.co.uk  
www.spirebourne.co.uk

## Secret Portrait of HM Queen Elizabeth II by local Sculptor

Master sculptor, Andrew Sinclair MRSS SWAc has been keeping a secret about a sculpture of the Queen he created some time ago, which will soon be displayed in The Royal Box at Ascot Racecourse.



In 2008 Andrew Sinclair MRSS SWAc was asked by Ascot Racecourse to create a bas-relief sculpture of HM Queen Elizabeth II, along with those of all the monarchs who have reigned since the racecourse was founded. Following her death, the bas relief will now take its place in the Royal Box.

Andrew was commissioned to create a series of bas-relief plaque portraits for the Royal Box at Ascot Racecourse. The course has always had a close association with the royal family, being only six miles from Windsor Castle, and the commission was to create portraits of all the monarchs who have reigned since the racecourse was founded in 1711 by Queen Anne.

Andrew researched each monarch extensively and worked closely with both



historians and the Royal Mint to ensure detailed likenesses. He worked directly from the original historic drawings of the coins from each monarch's reign. The bas-relief plaques are now positioned along the concourse of the Royal Box at the racecourse. Andrew was also commissioned to create the coat of arms that adorns both the inside, and famously, the outside of the Royal Box.

*Press Release from the Sculpture School*

## Devon Press Snippets

**North Devon Journal**, [Oct 17]. **Alison Hernandez, Devon and Cornwall Police and Crime Commissioner** announces a clamp down on speeding drivers and pushes back on motorists who regard motoring offences as socially acceptable. She highlights the worrying increase in road fatalities in Devon and Cornwall and the work of '**Brake**' the road safety charity.

**Crediton Courier**, [Oct 27]. **Mid Devon Council** is addressing the problem of **air pollution** by installing more electric charging points, a low emissions taxi programme and actively and financially supporting the new railway station at **Cullompton** with ample parking. **They have also required developers to provide air quality information as part of their applications.**

**The Moorlander**, [Oct 27]. Features the fortieth anniversary of the **Museum of Dartmoor Life in Okehampton**. An oak tree was planted in Simmons Park to commemorate this milestone of a home grown museum dreamed up by Rosie and John Young around their kitchen table four decades ago. The museum is planning a grand celebration next year.

**Western Morning News**, [Nov 5]. Leads on arts funding boost for the South West. Funding is being switched from London based venues e.g. English National Opera and the Donmar Warehouse and distributed around the regions. The Queen's Theatre Barnstaple and The Landmark at Ilfracombe will share 3 million. Plough Arts Torrington and Wren Music based at Okehampton will also benefit.

**Okehampton Times**. Reports on the Devon's best churchyard competition where Chagford Parish Church has won second prize for its promotion of a wild and wonderful vision that encourages and enhances bio-diversity and wildlife.

*Penny Griffiths*



**Quality hardwood logs  
cut to order and kindling.  
All aspects of low impact  
forestry.**

**Call Josh on 01363 83908  
or 07792 906258**



## Enjoying a Morning Cuppa with Friends

It was lovely to see you at the **Macmillan Coffee Morning** at Orchard Bungalow in Wembworthy in September, after a two year COVID19 break! Over 40 friends came along. There was nattering, laughter, coffee, tea, cake, a raffle, a 'bring and buy' sale and a lucky dip. The result of all this merriment was that **£415.00** was raised for a very good cause! Many thanks to everyone who came along, helped out and most of all donated, including those who couldn't attend on the day. Also a special thank you to **Chris Hodgson Engineering Ltd** for their most generous donation on the day. Here's looking forward to the next time!

*Brenda Churcher*

## COFFEE AND CAROLS - Saturday 3<sup>rd</sup> December

Come and join Okehampton Choral Society for a 'Coffee and Carols' morning 10 am-12 noon in Okehampton Church Hall (next door to 'Toast') and get your festive season off to a good start. Join in with some of our best-known carols or just enjoy listening.

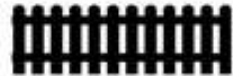
Admission is £1.50 to include coffee or tea and light refreshments, proceeds to be shared with Okehampton Christmas Lights fund.

# MTF CONTRACTING

A local experienced service for all your needs



- Agricultural Fencing
- Garden Fencing
- Tree Surgery
- Landscaping
- Fully Insured and Qualified
- Free no obligation quotes



T: 01837 83325

M: 0777207 8028

[www.mtfcontracting.co.uk](http://www.mtfcontracting.co.uk)



Moortown Farm, Winkleigh, EX19 8HA

# Sueno Beauty

Changes, Exeter Road, Winkleigh. EX19 8HW  
**Beauty, Massage & Holistic Therapies**

Located above Changes Hair Salon

Gemma & Lauren welcome you to

Waxing, Tinting, Lash Lifting, Maniures, Pedicures, Gel Manicures, Gel Pedicures,  
Gents Hand & Foot care, Under12s Kinder Manicures & Pedicures

Pro Crystallage Pro Ageing Facial, Ear Candling, Reflexology, Thai Foot Massage,  
Swedish Massage, Deep Tissue Massage, Aromatherapy Massage, Hot Stone Massage,  
Warm Bamboo Massage, Pregnancy Massage

Tel: 07590233607

Email: [suenobeauty@outlook.com](mailto:suenobeauty@outlook.com)

Facebook: @Suenobeauty

Opening times

Mon – Thurs 10 am – 9 pm

Friday 10 am – 6 pm

Saturday 10 am - 3 pm

# POSEIDON

W I N D O W C L E A N I N G

**WINDOW CLEANING**  
**DOMESTIC & COMMERCIAL**  
**RELIABLE AND AFFORDABLE**  
**GET A QUOTE TODAY**



CALL TIM SQUANCE ON : 07507 682 725



[info@poseidonwindowcleaning.com](mailto:info@poseidonwindowcleaning.com)



[www.poseidonwindowcleaning.com](http://www.poseidonwindowcleaning.com)

***Editors Apology: This article was omitted in error from the Autumn Edition (DW83)***

## **Taw Valley Quilters**

After six months of discussion, planning and preparation the day arrived, the 30<sup>th</sup> Anniversary of Taw Valley Quilters show was opened at the Community Centre. After 20 years the village was able to see what we make at our monthly meetings.

We had 7 quilt stands for the heavier and larger quilts, (a big thank you to Jenny Crossland from South West Quilters for the stands and all her help and advice); the rest were put over numerous sturdy clothes horses etc. and tables and chairs. Thank you also to Margaret Bridgeman for the use of her travel cot to display small and cot quilts.

We were unfortunately unable to display all the items listed on our leaflets, due to shortage of space.

The hall looked magnificent bedecked with bunting and with windows full of cushions, owls, and other things, besides all the boards full of our wall hangings, and not a space to be had.

It was Fair Saturday and fortunately the weather was good (a little too hot for some racing in the square), the direction signs were up, and our visitors and friends wandered in.

Our group of ladies were ready, and very enthusiastic, enjoying chatting and informing, none more so than Jackie (Hunt-Dart) a member from the start (still





sewing and making articles) and Hazel (John) a long-standing member at our Archive table. We had photos from the start of TVQ and some items on display were made for the 10<sup>th</sup> Anniversary in 2002.

It was wonderful to see the ladies and gentlemen enquiring how quilts were made, and trying to work out how some of the patterns, such as log cabin,

disappearing nine patch, Ohio Star, stack and whack etc. were assembled. As a group we attempted to show how different methods such as sashiko, applique, trapunto, baltimore to name a few, are incorporated into designs. Recycling is important to us, old shirts, scraps of fabric, ribbon, buttons, threads and decorations are never tossed aside once you are a patchworker and quilter!

Quilts were on display at our education table to show how quilts are assembled, and Lin (Clapson) and Val (Judge) could demonstrate how to hand quilt which the majority of TVQ members prefer.

Every one of the group pitched in to help with this exhibition and I am extremely proud of the effort made to make this a fantastic event. The menfolk must be thanked for their contribution too, for helping in the setting up and dismantling.

Thank you to all who supported our Sales and Tombola (there were over 70 prizes) tables, the proceeds help our funding of workshops and other activities.

We had a wonderful day and really pleased our show was enjoyed by so many, encouraging others to join in our absorbing hobby.

*Margaret Ferguson*



## ALL SHINES WINDOW & EXTERIOR CLEANING

- WINDOWS
- GUTTERS, SOFFITS, FASCIAS
- SOLAR PANELS
- HOUSE WASH (SOFT METHOD)
- CONSERVATORIES
- ROOF DE-MOSS
- PATIOS, BRICK, PAVING, DRIVE-WAY

 Find us on Facebook

**Tel: 01805 938502 - Mob: 07711079577**

## Word Search

N	S	E	C	N	F	K	R	P	V	D	B	D	E	Y
G	E	G	J	R	V	L	O	S	M	Y	Z	H	L	E
M	A	M	E	E	C	S	D	Y	U	I	Y	S	A	U
S	H	I	N	T	J	W	T	O	S	X	R	L	H	S
R	O	X	C	S	I	I	Z	I	L	T	B	H	W	U
G	R	Z	A	B	T	X	R	Q	N	P	E	N	S	P
J	S	B	Y	O	B	A	J	S	P	G	H	R	J	O
C	E	P	S	L	D	J	R	I	U	L	R	I	X	T
B	A	R	C	J	L	K	U	F	V	W	Q	A	N	C
Z	E	E	K	F	C	E	C	X	I	G	B	W	Y	O
G	L	S	J	H	O	L	H	N	E	S	A	V	S	I
U	T	M	H	P	E	P	A	T	M	L	H	Q	O	D
N	R	F	G	A	T	O	E	M	R	H	U	B	E	H
J	U	E	Z	S	R	M	B	U	D	I	Z	N	W	P
V	T	H	P	M	A	K	S	K	D	A	U	P	R	T

CLAM

CRAB

DOLPHIN

LOBSTER

OCTOPUS

OYSTER

SEAHORSE

SHARK

SHRIMP

SQUID

STARFISH

STINGRAY

TURTLE

WALRUS

WHALE

*Solution on Page 61*



**ASHRIDGE**  
— COURT —

North Tawton **EX20 2DH**  
[www.ashridge-court.co.uk](http://www.ashridge-court.co.uk)

### Grass-fed Beef

Locally raised beef from just £10 per kg  
Free local delivery (min 3kgs)

### Sawn Timber

Locally grown native hardwoods; Ash, Beech &  
Oak - Ideal for furniture & carpentry  
Contact Carolyn 01837 880192

### Ashridge Great Barn

Stay tuned for details of events in 2023  
including a pop-up restaurant in the Spring  
Contact Cat on 01837 352025



## Sudoku Puzzle

	4			2		8	6	5
7			6		8			
1					4	7		2
	1	8	7	4				
		5	2		9	6		
				8	6	1	5	
9		1	5					6
			8		2			7
8	7	3		6			2	

Solution on Page 61

*("Sudoku puzzles are provided by [www.sudokuoftheday.com](http://www.sudokuoftheday.com)")*



# DOWN FARM

Growing food, feeding the community

Organic produce from our cooperative farm and local suppliers.

Online farm shop OPEN weekly **Friday - Monday** for delivery on Fridays. Order online or via phone.

.....

**- VEG - VEG BOXES - SALAD - HERBS - FRUIT - MILK -**

**- NEW FOR 2022! JOIN OUR FLOWER CSA TO RECEIVE A WEEKLY SHARE OF OUR FLOWER HARVEST-**

.....

Farmers Olivia, Henry, Josh & Chloe

07739892488 / 07595005482 | [www.down-farm.com](http://www.down-farm.com)

**[hello@down-farm.com](mailto:hello@down-farm.com)**

# YOUR COMPLETE ELECTRICAL SERVICE



We have more than 28 years of experience in electrical contracting throughout Devon.

- » Rewiring
- » New consumer units
- » Minor works
- » New installations
- » Energy saving and LED
- » Fault finding
- » Emergency call outs



*We'll take care of it.*

**Call us now for a  
free estimate and advice.**

**Winkleigh - 01837 83900**

Bedwell Electrical  
The Airfield, Winkleigh  
Devon, EX19 8DW

info@bedwellelectrical.co.uk  
[www.bedwellelectrical.co.uk](http://www.bedwellelectrical.co.uk)



## Puzzle Solutions

N	S	E	C	N	F	K	R	P	V	D	B	D	E	Y
G	E	G	J	R	V	L	O	S	M	Y	Z	H	L	E
M	A	M	E	E	C	S	O	Y	U	I	Y	S	A	U
S	H	I	N	T	J	W	T	O	S	X	R	L	H	S
R	O	X	C	S	I	Z	I	L	T	B	H	W	U	
G	R	Z	A	B	T	X	R	Q	N	P	E	N	S	P
J	S	B	Y	O	B	A	J	S	P	G	H	R	J	O
C	E	P	S	L	D	J	R	I	U	L	R	I	X	T
B	A	R	C	J	L	K	U	F	V	W	Q	A	N	C
Z	E	E	K	F	C	E	C	X	I	G	B	W	Y	O
G	L	S	J	H	O	L	H	N	E	S	A	V	S	I
U	T	M	H	P	E	P	A	T	M	L	H	Q	O	D
N	R	F	G	A	T	O	E	M	R	H	U	B	E	H
J	U	E	Z	S	R	M	B	U	D	I	Z	N	W	P
V	T	H	P	M	A	K	S	K	O	A	U	P	R	T

3	4	9	1	2	7	8	6	5
7	5	2	6	3	8	9	4	1
1	8	6	9	5	4	7	3	2
6	1	8	7	4	5	2	9	3
4	3	5	2	1	9	6	7	8
2	9	7	3	8	6	1	5	4
9	2	1	5	7	3	4	8	6
5	6	4	8	9	2	3	1	7
8	7	3	4	6	1	5	2	9

FOUR SEASONS BINGO 2022

WINKLEIGH

EVERY 2nd & 4th FRIDAY OF THE MONTH

CONTACT DEREK ON 01837 680071

EYES DOWN 7.30 PM

## And Finally .....

This edition of Distinctly Winkleigh is following hot on the heels of the autumn one but we wanted to return to the 'normal' quarterly cycle, after the unexpected delay last time. Consequently there are not quite as many reports and articles as usual this time, although everything is in full colour once again as Christmas is coming.

Our advertisers continue to support us, for which we thank them; unfortunately we have had to increase our advertising costs, starting with the spring edition in 2023, in response to the ever-increasing printing and postage costs (details on page 3).

We would also like to thank everyone who stops by our table at the Monthly Market to express their interest in Distinctly Winkleigh and the Winkleigh Society, several of whom have made donations to our funds for which we are very grateful.

Having recorded the Platinum Jubilee and mourned the sad death of our late Queen in 2022, we can now look forward to the Coronation of HM King Charles III in May.

The deadline for the Spring 2023 edition will be noon on Monday February 6<sup>th</sup> to provide a bit more time to put it together. Publication and distribution are planned for the end of February, but please don't wait until the last minute to send us articles!

**We wish you a very Merry Christmas and Happy New Year and thank you all for your support and interest.**



Let us help you take the stress out of family or friends coming to visit. Clotworthy, a period Georgian house close to the village centre, offers 4\* Gold Award accommodation.

All rooms are large and with good views, and all have en suite facilities with free standing baths or showers.

Give us a ring for availability or send us an e-mail,

**Clotworthy House Bed & Breakfast**

**Torrington Road, Winkleigh, Devon EX19 8HR**

**Telephone Susan or John Short: 01837 83709**

Email: [enquiries@clotworthyhouse.co.uk](mailto:enquiries@clotworthyhouse.co.uk)

Web: [www.clotworthyhouse.co.uk](http://www.clotworthyhouse.co.uk)

## **Winkleigh POST OFFICE**

*~ Not just a Post Office! ~*

**Full Banking Service**

**Deposit Cash & Cheques Business or Private  
to Any Bank Or Building Society**

**Plus Withdrawals of Cash**

**Order & Collect Travel Money  
(Euro & US Dollar always in stock**

**All Other Currencies – 24 hour notice)**

**Pay Car Tax + Payment of all Bills with a Barcode**

**Mobile, Gas & Electricity Card / Key Top-up**

**Wide range of Cards,**

**Full Range of Stationery & Seasonal Goods**

**Open 8.30 am – 5.00 pm Mon-Fri & 9 am – 12.30 Sat**

**Owner: Tony Bayley – 01837 83427**

# B

**BURLINGTON UK**

**BUILDING & CONSTRUCTION**



### **Why Choose Burlington (UK) Construction Ltd?**

- Specializing in Heritage work, Extensions, New Builds & Renovations
- Over 30 years of experience
- We offer competitively priced building work

**[www.burlingtonuk.com](http://www.burlingtonuk.com)**

**Tel: 07932 805 271**

**Email: [admin@burlingtonuk.com](mailto:admin@burlingtonuk.com)**



## **DISTINCTLY WINKLEIGH - PUBLICATION INFORMATION**

The Winkleigh Society publishes Distinctly Winkleigh quarterly at the end of February, May, August and November. Copies are delivered or posted free of charge to all households and businesses in the Parish.

The DEADLINE for articles and repeat adverts is NOON on the SECOND MONDAY of the months of publication. Details of NEW adverts or CHANGES to existing adverts must be submitted by the FIRST DAY of the publication month.

Please email Articles to [articles@distinctlywinkleigh.co.uk](mailto:articles@distinctlywinkleigh.co.uk) and Adverts to [adverts@distinctlywinkleigh.co.uk](mailto:adverts@distinctlywinkleigh.co.uk), or contact the Editor for the delivery address.

One-off posters for community 'not-for-profit' events are free of charge.

Please ensure that any images you submit are of the highest possible resolution and that all articles and images are copyright-free. All articles submitted for publication may be subject to editing, primarily for space or layout reasons.

Please note that the views expressed in submitted material are not necessarily shared or endorsed by the newsletter team or The Winkleigh Society. Furthermore the Society does not recommend, or accept any responsibility for, any information, goods or services advertised in adverts or articles.

### **ADVERTISING RATES FOR A SINGLE EDITION:**

**Quarter-page: £15, Half-page: £30, Full page: £60**

**(Discounts for four editions when paid up-front)**

---

**EDITOR: Godfrey Rhodes, Winkleigh EX19 8JP - Tel: 01837 682982**

**PRINTERS: HEDGEROW PRINT, CREDITON, EX17 1ES - Tel: 01363 777595**

**DW DISTRIBUTION MANAGER: Barry Jenkins – Tel: 01837 682909**

---

### **WINKLEIGH SOCIETY COMMITTEE MEMBERS**

<i>Chair</i>	Penny Griffiths	01837 83407
<i>Vice Chair</i>	Margaret Miller	01837 83398
<i>Hon. Treasurer</i>	Rachel Goldsworthy	07876 508228
<i>Hon. Secretary</i>	Philip Griffiths	01837 83407
<i>Committee Members:</i>	Alan Jacobs	Barbara Jenkins
	Royston Naylor	Godfrey Rhodes
		Adam Wonnacott

All residents of Winkleigh Parish are welcome to attend and vote at Winkleigh Society General Meetings. Further information about the Society can be accessed online at: <https://winkleighonline.com>