

# DISTINCTLY WINKLEIGH



*Working for Winkleigh*



*Fair Opening Ceremony — photo by Rachel Goldsworthy*

**Edition 87**

**Autumn 2023**

*Cover sponsored by*

*George Shacklock, MTF Contracting, Winkleigh. 01837 83325*

**The Winkleigh Society Quarterly Journal**

# Heating, Cooking & Living.

- Stoves & Fires • Flues, Chimneys & Stove Installations
- Seasoned Logs • Range Cookers • Spares & Accessories



To see one of the largest selections of stove, fires and range cookers in the South West, many of which are live and on display, visit Rangemoors. Whether you want to add warmth and atmosphere to your living space or cook up a storm in the kitchen, we have the perfect appliance for you and your home.

Telephone 01837 680068  
[www.rangemoors.co.uk](http://www.rangemoors.co.uk)

Rangemoors

## The Winkleigh Society: Chair's Report August 2023



**New Handrail on Elms Meadow:** Very pleased to report that **Adam Wonnacott** has installed a new stout handrail on the Elms Meadow estate. The old one was neglected and broken providing no protection for walkers and a dreadful gateway advert on the approach road into Winkleigh.

Adam, with materials and labour funded by The Winkleigh Society, has designed and erected stout oak posts and treated wood

rails in accordance with Highways specifications. *Distinctly Winkleigh* has told the story before of how Brian Holland battled and campaigned with Elms Meadow mothers to create this walkway when the only route out was via the 60 mph bypass. Locals call it **Brian's Way** and we hope in the near future to sign it that way.

**Future Events:** September 2<sup>nd</sup>. We will be taking part in the Parish Council **Get-to-know your- village event at the Community Centre**. Come and meet our committee, find out what we do, peruse our archive and learn how *Distinctly Winkleigh* is put together and distributed.

**North Devon Heritage Centre Visit: Barnstaple Library on Tuesday September 19<sup>th</sup> 2 - 4 pm. The Winkleigh Society has booked a private session with the chief archivist Gary Naggs.** He will be displaying the considerable Winkleigh and Hollocombe archive that is held on the top floor of the library: Church deeds dating from Henry

### RAY SQUIRE CONTRACTING WINKLEIGH

Hay-making, Grass mowing, Turning, Rowing up,  
Small bale baling, Round bale baling (net-wrap),  
Flail Topping, Hedge Trimming, Muck-spreading,  
Chain Harrowing, Rolling

**Give us call on – 07912316679**

VIII, many maps, legal deeds, bastardy, apprentice, militia and poor law records. A rare opportunity to be guided through original documents and ask questions. We can take up to 25. **Interested? Ring Penny on 83407 to book.**

**Posties Tea:** Our annual thank you to our brilliant team of posties will be held at Fiona's Farm Shop & Kitchen where we treat them to one of Fiona's wonderful afternoon teas. **Date: Sat 7<sup>th</sup> October.**

**Thank you: Peter and Margery Howard** who are upping sticks and moving to Okehampton. Both have played an active part in village life, Margery, a talented artist and key member of the art group, and Peter, church organist and a founder member of the Bondleigh Barn Band and a dedicated ornithologist tracking and identifying changing bird migrations. **Peter was also Chair of The Winkleigh Society for several years and organised an impressive series of talks and lectures.** He was particularly interested in landscapes and the danger of landscapes such as Winkleigh's [not qualifying as an ANOB] being overlooked. Especially after the pandemic "safe access for all is central and a powerful emphasis on public health is expected". [DW81 page 23]. All Peter's contributions can be accessed in past copies.

*Penny Griffiths*

## **Winkleigh POST OFFICE**

*~ Not just a Post Office! ~*

**Full Banking Service**

**Deposit Cash & Cheques Business or Private**

**To Any Bank or Building Society**

**Plus Withdrawals of Cash**

**Order & Collect Travel Money**

**(Euro & US Dollar always in stock**

**All Other Currencies – 24 hour notice)**

**Pay Car Tax + Payment of all Bills with a Barcode**

**Mobile, Gas & Electricity Card / Key Top-up**

**Wide range of Cards**

**Full Range of Stationery & Seasonal Goods**

**Open 8.30 am-5.00 pm Mon-Fri & 9 am-12.30 pm Sat**

**01837 83427**

**Owner: Tony Bayley**



## Winkleigh Circa 200 BC?

In early summer, neighbours on Hatherleigh Road who overlook the next proposed Allison Homes site were intrigued by the busy activity of the archaeological team sent in to excavate trial trenches. It was obvious, says **Malcolm Passmore**, that they were excited by what they were finding.

Local interest has been stirred by the news that, following excavation of these trial trenches (dug to test the results of an earlier geophysical survey), more investigations will need to be conducted. **John Valentin of AC Archaeology, Director [Devon Office]** is leading the investigations and writes: **“As anticipated the geophysical results indicate an oval-ditched settlement enclosure of 40 metres diameter and it appears we have a small defended farmstead of middle-to late iron age date [circa 200 BC]”**.

Following discussions with the Devon Historic Environment Team: John goes on to say: **“A larger area will be opened up and more detailed excavation of the enclosure and settlement will take place which is likely to be of six to eight weeks duration”**.

Apparently **Allison Homes** is keen to make the findings known in open days for the school and village when it is better understood what has been found. *Distinctly Winkleigh* will keep you posted.

*Penny Griffiths*



**Open Book** Construction & Developments Ltd

**General Building Works  
Period & Listed Building Renovations  
Maintenance & Repairs**

**For a free, no obligation estimate, please call:**

**01837 83890 • 07541 002017**

**info@obcd.co.uk**

**www.obcd.co.uk**

## Our Devon County Councillor writes ...



Can I start by thanking everyone who was involved in running and making Winkleigh Fair such a success? I know running a large event like this is not an easy task, especially when the weather decides to cause havoc! Nonetheless, I enjoyed coming to both the opening and closing weekends of the Fair, and despite the rain having to move everything indoors on the last weekend it was great to see so many people and families still being able to enjoy themselves.

It has been another busy summer at Devon County Council. Locally, the 20 MPH zone around Townsend Hill has been advertised and barring any major objections or delays (and I know from painful experience how likely delays are in this process!), we **should** be looking at an implementation in the Autumn. As part of this scheme we will also see the 30 mph limit extended on the A3124 'bypass' just past the junction with Elms Meadow. This will correct the long-standing anomaly here where Elms Meadow currently exits onto a 60 mph road.

We have also seen the start of the 'Dragon Patcher' working in Winkleigh and roads around Torrington Rural however, at the time of writing in early August, progress has been much slower than I would have liked, mainly due to the torrential weather we've had since July. I am hoping that from August onwards we will have a sustained period of warm, dry weather as that will help with getting all the road schemes done on time!

**On more pan-Devon matters, an issue I would like to write about is the Mobile Library Service. A decision was taken in July's Cabinet Meeting to decommission this service, mainly due to the age of the remaining vans**

**NICK BEIGHTON**  
**Carpentry**  
**WINKLEIGH**

Garden Structures  
Interior Work  
Sheds  
Climbing Frames

Raised Beds  
Gates and Fencing  
Decking  
Landscaping  
Repairs

beightonnick@gmail.com  
**07842455522**

(now around 15 years old), the high cost of replacing them and also due to a very clear decline in the number of people using the service. Already, some of the communities I represent in Torrington Rural no longer receive visits from the Mobile Library because no one was using it. I have carefully looked at the data of the Torrington van: in Winkleigh in 2022 there were 9 visits in the Square where on average 13.9 people were using the van. At Four Seasons an average of just 1.7 people were using the van over the 9 visits, while in Hollocombe there were 8 visits with an average of 9 users.

Nonetheless, in many other villages the numbers were much lower than the Winkleigh and Hollocombe usage, for example in neighbouring Ashreigney the average number of users was just 2.3. In St Giles in the Wood an average of just 1.5 people used the mobile library at the church gate stop over 9 visits over 2022.

To renew all four vans would likely cost DCC in excess of £800,000 and we can tell from the data that fewer people are using the service. So for me, while it is sad that the Mobile Library is coming to an end, the priority for me has always been *how* we can deliver a service. If one way of doing it isn't working any more, what can we do instead?

Therefore, while the Mobile Vans will be decommissioned, the County Council will instead be looking to support rural outreach services and in particular, look to see if we can establish new Community Library facilities, open and accessible to local residents. While we are not talking about re-creating Torrington or Bideford Library in a village, I think we can set up local village community libraries that, for example, could be used or based in a village hall and combined with an event such as a coffee morning. These could be open for longer, and be far more accessible to people than an occasional 2-4 weekly visit of a mobile van for 30 minutes that, particularly in winter months, is likely to be in unpleasant inclement weather.



## ALL SHINES WINDOW & EXTERIOR CLEANING

- WINDOWS
- GUTTERS, SOFFITS, FASCIAS
- SOLAR PANELS
- HOUSE WASH (SOFT METHOD)
- CONSERVATORIES
- ROOF DE-MOSS
- PATIOS, BRICK, PAVING, DRIVE-WAY

 Find us on Facebook

*Tel: 01805 938502 - Mob: 07711079577*

Roborough and High Bickington already run their own local community libraries and there are many other examples across Devon. DCC is looking to pilot a community library initiative in Torrington Rural and I am very keen that we do so, particularly here in Winkleigh!

For me, I think being able to run community libraries in our villages would be a much better way of tackling rural isolation and loneliness, while also continuing to promoting books and reading in general.

The Council is also investing in the Home Library Service so that those who cannot travel can have books delivered to them at home (with incidentally a wider choice of books from the main library, than the limited selection available at the vans).

For school children, the Library Service will continue to promote digital subscriptions so that our young people can read books on their tablet of choice, as well as complementing existing library book services offered in schools.

**I hope that we will see more community libraries in Torrington Rural and that we can build on the legacy of the old Mobile Service with an even more effective community outreach scheme.**



**Local Family Run Residential  
Sales & Lettings Agent**

**Call us for a FREE  
no-obligation Valuation of your Property.**

**01837 83393**

**info@howesestates.co.uk www.howesestates.co.uk**

**Sell your property from 0% and no upfront fees\***

\*terms and conditions apply



Away from libraries and onto other pan-Devon issues, we appear to be in an interesting phase of negotiations with the Government over a potential devolution deal for Devon. We have always been clear that we do not want or expect an elected 'Mayor' for Devon, nor any other costly reorganisation of local government in the County. This stance initially did not gain much favour in London but with other Mayoral bids, such as the one in Cornwall, failing to get local support, the Government have now accelerated discussions with DCC and our partner Councils.

Obviously with negotiations still ongoing at the time of writing, I cannot say in any great detail what the final deal will look like. However, we are pushing hard for extra powers over housing, further education and skills funding, public transport funding, and additional capital funds for regeneration projects and initiatives like the Appledore Maritime Innovation Centre project which recently secured Levelling Up funding.

Time will tell what the final deal will entail, but more funding, and more powers to be issued locally is, I think, to be welcomed. One matter we are making clear to the Government is that if Cornwall is given extra powers and funding in devolution, we expect the same for Devon. Many of our key economic indicators, whether you look here at Torrington or in the south in Torbay, are worse than those of Cornwall. If we are to start reversing those trends then we will need the same, if not an even better deal than the Cornish!

As ever, if there are any DCC issues you'd like to raise with me you can contact me on Facebook at [facebook.com/clrsaywell](https://www.facebook.com/clrsaywell), ring 07886 446560 or email [andrew.saywell@devon.gov.uk](mailto:andrew.saywell@devon.gov.uk).

**WINKLEIGH AERIALS**

**0800 0930 625 Mob 07970 963450**

*UPGRADED AERIALS  
FILTERS TO REMOVE INTERFERENCE*

 **City & Guilds Qualified** 

**AXA Insured**

Trade member for over 40 Years  
Discount applied for Pensioners. Free surveys

Wifi - Cctv - Camera to your TV - Freesat - Dab/FM

Also: 2nd or 3rd Aerial points installed. New TV's supplied & set up

## Letter to the Editor



With reference to my article about the Devon Mobile Library in DW 86 page 4.

I would like to let readers know that I did not intend to give the impression that it doesn't matter if the Mobile Library closes, hence the title words, "Closure Threat". This was originally submitted within

the context of my article re The Digital Divide: DW86 page 32, as yet another example of digital exclusion!

Although by no means a replacement service for the Mobile Library, I do, however, commend the kindly attitude of Julie, Bev, Carole and Mick for offering to enhance their second-hand book collections in the Village Hall monthly market and/or the Wednesday Mini-Market in the Community Centre and bringing that to the attention of those who may not realise that these resources are available.

At this time we do not know the outcome of the discussions regarding the Mobile Library Service. I believe a meeting was held by the Devon Library Service on 12<sup>th</sup> July. As I regularly use the Mobile Library Service myself, I would be very sorry to see it go, and have put forward several ideas as to how it might be made more economically viable.

*Rachel Goldsworthy*

[Editor's note: See DCC News article on page 6]

## News from Winkleigh Morris

Winkleigh Morris will be starting their winter practice season with taster sessions on Tuesday, 1st October & Tuesday 8th October at 7.30 pm in Winkleigh Community Centre. New dancers and/or musicians are very welcome - male or female, any age (minors 10+ should be accompanied by a parent or other responsible adult). No previous experience is necessary.

It is nearly 34 years since Winkleigh Morris was first started by Sylvia Duffy, then landlady of the former Winkleigh Hotel. We still have some of the original members! In the first few years nearly all the members lived in Winkleigh or the neighbouring villages, but more recently our appeal has spread, and some dancers travel from Lustleigh to the South, Great Torrington to the West, Chittlehampton to the North and Witheridge to the East. We would, however, really like to have greater support from our home village!

For further details, see our website, [www.winkleighmorris.org.uk](http://www.winkleighmorris.org.uk).

We also intend to be at the Community event in Winkleigh on the morning of Saturday, 2nd September.

*Colin Andrews*

## **BEING PART OF WINKLEIGH – SOMETHING FOR EVERYONE!**

*Help us shape the future! Join us at Winkleigh Community Centre  
on 2<sup>nd</sup> September 2023 10-12 pm*



*Everyone is invited to join us to celebrate our lovely village and all that is on offer to our community. We welcome established and new parishioners to explore what is wanted for the future. We aim to make it a fun, informative and active occasion. If you are curious and interested in what is available and want to learn more, come to meet and join clubs and groups in an open morning with a wide range of activities on offer including sport/social clubs, societies, businesses and other support organisations in our community. Come along and enjoy some free refreshments, entertainment, explore ideas, connections and activities on offer to local people. This is an opportunity for getting together and promoting and celebrating what is available.*

*The village is growing, and we are very proud of all the many and varied activities, agencies, clubs, and support groups provided to serve our community. Our ambition is to explore how we can connect in even better and more effective ways and this needs collective ideas and suggestions from you all, please.*

*We are holding it alongside the Saturday Market, beginning at 10 am in the Community Centre until noon.*

*There will be tables with representatives from clubs and organisations: ranging from the biosphere and wildlife to sport, fitness, wellbeing, charities, cultural and societies, to name but a few, providing advice and information as well as some fun activities to take part in.*

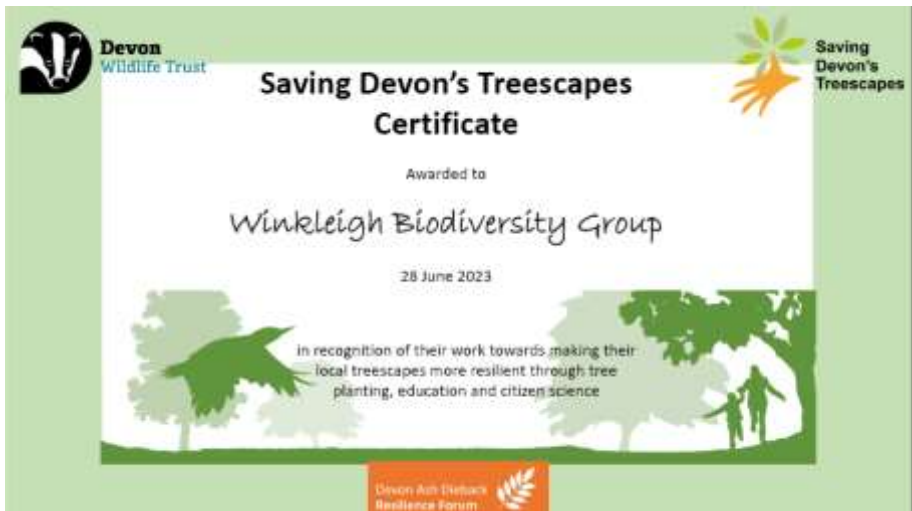
*Parish Councillors will be available to listen to people's views, to answer questions and to consult in several ways, including a brief questionnaire to gather views and ideas. We would like to explain what we do and how it is possible to connect with us. Above all, we all have the same goal: to connect with each other and continue to develop this vibrant village.*

*If you are interested and willing to also get involved as a provider of services to people in Winkleigh, please email to [Clerk@winkleighpc.org.uk](mailto:Clerk@winkleighpc.org.uk) or call Angela Findlay on 07455 365144 or Pauline Odulinski on 07876 142998 for more information.*

## Winkleigh Biodiversity Group

We were pleased to receive a Devon Treescapes Award from Devon Wildlife Trust for our group's tree-related activities. This included the two Tree Giveaways, citizen science surveys for harvest mice and dormice at the Recreation Field and our regular tree-planting events. Our prize was a selection of Field Guides to help us with identifying wildlife. Some of us have been noting bat species around the Parish this summer, with the help of electronic equipment to pick up their calls. There will be an opportunity to find out more about our activities on Saturday 2nd September at the community fair in the Village Hall.

Kim J Melhuish ([wildspacestorridge@gmail.com](mailto:wildspacestorridge@gmail.com))



The advertisement for Sorrel Countryside Management Services is set against a brown background. At the top, it reads "SERVICES FOR SMALLHOLDINGS" in large green letters, followed by "Fencing • Hedgerow Services • Woodland Management" in smaller white text. Below this is a logo for "SORREL" with a green leafy branch above the letters. Underneath the logo, it says "Countryside Management Services" and "Working with Nature". To the right of the logo, there is a list of services: "A range of services to improve, enhance and restore your green areas". Below this, the contact information is provided: "Contact: Philip Cribb BSc (Hons) PGCE 07815 133576 phil@sorrelcms.co.uk". At the bottom, the website "www.sorrelcms.co.uk" and social media handle "@SorrelCMS" are listed, along with the address "Venton Farm • Drewsteignton • Devon EX6 6PG". On the right side of the advertisement, there are three small photographs: a wooden fence, a white fence, and a pile of brushwood.

## News from Winkleigh Parish Church



THE WINKLEIGH  
MISSION COMMUNITY

All Saints Church has been at the heart of our village since the early 14<sup>th</sup> century. It has been repaired, remodelled and restored several times over the centuries since then. It is a place which marks the events of human life as well as the corporate life of our village, and is a standing testament to generations of Christian worship and faith. It is a grade 1 listed building, noted for not only its surviving medieval and 17<sup>th</sup> century fabric but also the high-quality restoration work carried out in the late 19<sup>th</sup> and early 20<sup>th</sup> century. This includes the unusual sgraffito on the walls, the highly decorated wooden ceiling and all our wonderful carved angels.

As you will appreciate it takes a lot of time, energy, and money to keep such an ancient building open and to preserve it for future generations. Like all other listed buildings we receive no external funding or support for this purpose. We are extremely grateful for everyone within the church and community who volunteer their time or donate financially towards the upkeep of the building.

Finding skilled crafts people to undertake some of the more specialised work takes time and there are often only one or two companies in the country who can undertake the work. Add in the paperwork and permissions required to undertake work on a listed building and you will see how much patience is required!

**September Open Events**  
Visit our website to book a place:  
**Open Mornings -**  
Monday 1<sup>st</sup> & Thursday 1<sup>st</sup> 11.30am-1pm  
**Open Evening**  
Thursday 28<sup>th</sup> 4.30-7pm

**Chulmleigh College**  
*'Nothing but our best'*

t: 01769 580215 w: [www.chulmleigh.devon.sch.uk](http://www.chulmleigh.devon.sch.uk) e: [admin@chulmleigh.devon.sch.uk](mailto:admin@chulmleigh.devon.sch.uk)

Compassion  
Ambition  
Teamwork



The good news is that we have been overwhelmed by the generosity of people with donations towards the clock appeal, meaning that we have covered the cost of the repair. Once the new part has been specially made, the clock should be marking time for the village for another 40 years or more. The surplus funds from the appeal will be used towards the other repairs and maintenance needed to keep our building in good condition. These currently include work on the tower itself, the repair of the Webber monument in the Lady Chapel and work to keep the vestry watertight. Looking ahead to the future we have some work to do on the west door, some repointing and various bits of more specialised stonework. Ongoing donations towards the upkeep of the building are always welcome. Cheques should be made payable to 'PCC Winkleigh' or BACS payments via (Lloyds Bank, Okehampton: Sort Code: 30-96-23 Account: 00147482).

It is of course not just the building that is so important to us but also the living and thriving Christian community within. So many people give of their time and talents to enhance our worship, make sure our services run smoothly and provide a warm welcome. We are saying goodbye and thank-you to Peter and Margery Howard for all they have contributed to All Saints over so many years. Also **this means that we are without a regular Sunday organist, so if you have such a talent and would be willing to play once a month or more then please get in touch!**

Our doors are always open for prayer, reflection or just to enjoy the building. All are welcome to help us in our stewardship of such an ancient building in whatever way – let us know your hidden skill or talent! Together we can ensure it stands as a place of worship and faith at the heart of our community for centuries to come.

*Helen*

Revd Helen Blaine (01837 83710) [revhelenblaine@outlook.com](mailto:revhelenblaine@outlook.com)

**MDM**  
**MID DEVON**  
MOTOR CO.

**Class 4 + 7 Mot Station  
Servicing and Repairs  
Four Wheel Alignment  
01837 83334  
www.middevonmotor.co.uk**

**MINI-MARKET & COFFEE MORNING**  
**EVERY WEDNESDAY between 9.30 & 10.30**  
**IN THE COMMUNITY CENTRE**  
**ENJOY CHAT OVER A CUP OF COFFEE, TEA or HOT**  
**CHOCOLATE and a biscuit (or two)**  
**All Donations will go to Local Charities**  
*(after deduction of running costs)*  
**Everyone is welcome to come along**

**Winkleigh Parish Council**  
**Notice of**  
**Vacancies for 3 Members of the Council**

*Following the Election in May, there are three vacancies remaining for  
Members of the Parish Council.*

*These may be filled by Co Option at the meeting to be held on 27th September  
2023 at 7.30pm in Winkleigh Community Centre.*

*To be eligible for office you will be; aged 18 or over, an elector, landowner,  
resident or have worked in the Parish or, resident within 3 miles of the Parish  
boundary for a period of 12 months prior to your application.*

*If you are interested in joining the Council and representing your community,  
please contact the Clerk to the Council in the first instance providing your full  
name, full postal address and CV and/or why you wish to apply to the Council*

*by*

*Tuesday 19th September 2023.*

*Anna Clarke*

*clerk@winkleighpc.org.uk*

*Date of posting: 1st August 2023*



**Changes**

**Hair Salon**

**01837 83004**

*Offering all your specialised hairdressing requirements*

*Colouring – Cutting – Perming - Barbering*

*Ear Piercing (ages 8 and above)*

*Opening Tuesday – Friday - 9 am – 5 pm*

*& the first Saturday of every month by appointment*

*Exeter Road, Winkleigh EX19 8HW*

*- Room to rent above the salon (therapy room, office, etc.) –*

## News from Winkleigh Parish Council

In May eight councillors were elected unopposed by default as we needed eleven and only eight people put themselves forward. Three Councillors stood down: Simon Hodgeson, Alice Turner and Ian Whitehead. Simon has served the village for many decades, Alice for some years and Ian for one term of office. May I thank them for their contributions over time and wish them well in the future. We welcomed two new councillors: Andrew Warner and Andy Keys, whom I am sure will make a great difference.

All councillors are working hard on various projects to take the council forward for which I thank them and we are pleased that the Council was successful in preventing the development at the Great Well Park site. My thanks to District Councillor Newton for calling this project in. Whilst the site has planning permission and is within the development Boundary, WPC successfully argued the case to reject Planning Permission for Great Well Park on grounds of poor design, density (71 planned when up to 55 were agreed) and failure to address aspirations in TDC Local Plan and WPC Neighbourhood Plan or to reflect identified, local, housing needs for example four-bedroomed properties when smaller more affordable homes are needed. It was also noted that the affordable homes were not indistinguishable from market priced homes nor integrated into the estate but clustered in two areas. The fact that most people have to travel from Winkleigh to work, increasing traffic volume and carbon emissions was also noted.

WPC Planning has worked long and hard to achieve this outcome. I would also like to thank Pauline Warner, Penny Griffiths, Adrian Mercer and all former and current members of WPC for their support, as well as those who wrote the Village Design Statement and created the Neighbourhood Plan, for all their help over many years.

I have no doubt that the owner and the developer will return with another application; let us hope that any new development takes into consideration the actual housing needs of the area, the aspirations of the Neighbourhood Plan, proximity to an historic monument and is future-proofed for climate change, is environmentally friendly, and is not over-developed leading to a hot high-density estate. Let us also hope that any new developers contact the Parish Council and genuinely engage with our community.

Sadly, our Locum Clerk, Lorraine, who stepped in when Benjamin Roth left to concentrate on his studies is also leaving as she lives too far away to drive late at night. May I thank her for her work and wish her well in the future; she has been a great help to us. In Lorraine's place we have appointed Anna Clarke who is experienced and competent and lives locally. I am sure you will all make her very welcome.

*Angela Findlay  
Chair of Winkleigh Parish Council*

## Farewell to Exeter Road - In praise of the vernacular

Sixteen years ago we moved to Winkleigh from Broadclyst buying a house in Exeter Road. Now we are leaving, to be nearer family, saying goodbye to Exeter Road which I have come to love. Exeter Road scarcely has two buildings which relate to one another. There is one attempt at Moorland Heights to introduce something like a terrace, but every other property is individual. When buildings are planned by outside authorities they always want to impose order, whether this is council houses, property developers, government agencies, or great landowners. They want to impose rational planning and design and can only do that by uniformity, of plan, of design, of colour. Here every property is individual. This is not 'polite' architecture but vernacular. I once lived in a Georgian terrace in Bath, the opposite end of the spectrum, built for show, not for me. Here some properties were not built as residential at all, such as at Forge End, or the former Methodist Chapel, the Watchmakers or the Smithy. Others, like our own, have been dropped into a spare space. The dates spread over at least five centuries.



Adding to the flavour are Mid-Devon Motors at one end, BT Autos in the middle, and to the west a former garage, lately a motorcycle repair shop and now a café and florist, as well as a Hairdressing salon presided

over by a large Gulf petrol sign. This is all a triumph of the vernacular. Designers have had no hand in it, except perhaps for Moorland Heights which is clearly a designed artefact, intruding rationality into the jumble. It's almost impossible even to find two house name plates in the same script!

The public space, the road, itself is obviously unplanned, merely the space left over after building. No planner could possibly accept the blind corner at Lower Town. It is usually quite impossible to drive from end to end without stopping. There is no pedestrian way, or rather, not all the way, just a bit here and there. So car drivers have to accept that the pedestrian has at least as much right as they have to be in the middle of the road. Indeed, our late cat used to sit in the middle of the road and assume that traffic would treat him as a roundabout.....and it did. Needless to say you cannot see from end to end. I did once hear someone who had recently

moved to the village (from a town) suggest that the 'solution' to Exeter Road (thus tacitly assumed to be a 'problem') was to restrict traffic to 20 mph and put yellow lines right along it. How bonkers! Random car parking throughout its length is very effective in slowing traffic (Admittedly you always get the loonies, but a 20 mph restriction will not cure them) and there is good research to demonstrate that yellow lines would increase the speed, as drivers will presume it to be a space allocated to them. Admittedly it is a good idea if a fire engine can get through, but I do often smile to see some articulated HGV desperately backing westwards having discovered that there is no chance of getting through.

I once took a party of design students to the Isles of Scilly. On St Martins there were a dozen self-made direction notices in the hedge, some quite neat and printed, some



scrawled, to 'the pub', 'the shop', 'the café'. As young designers they were shocked and keen to impose order so I took them all across to Tresco, an island largely in single ownership so there was a neat information panel in yellow on green giving all



the information.....and the students said 'Oh, it's a theme park'

Thank goodness Exeter Road is in no danger of being part of a theme park. . Long live Exeter Road, with all its inconveniences and frustrations. Hurrah for the vernacular, made by people not designed by experts. We shall miss it.

*Peter Howard*



## Winkleigh Village Hall

As I write this at the beginning of August, we seem to have experienced the first month of Autumn....July!

**I am highlighting three areas this month:**

- **The need for new hall committee members**
- **The Autumn movie night programme**
- **Christmas Market (I know, it's only August!)**

**By the time you read this, a number of hall committee members will have either stepped down or will shortly be doing so. This means that we will have only five members remaining. Ideally, we would like a total of nine or ten on the committee, but if we find another two then that would be wonderful. So if you think you can spare a few hours each month then please contact me. I will be delighted to talk to you. Equally, if you would like to become a helper, rather than a committee member, that is, someone we could call upon to help with specific events, then again, please contact me.**

The Autumn movie night programme commences on Friday 8<sup>th</sup> September when we will be showing the Elton John biopic, *Rocketman*. In October and November respectively, we will be screening *A Knight's Tale* and *Red Joan*. Please see the posters in this report. It is important that you book your seats with me beforehand as places are limited to 35. Also, book early as the movie nights are proving to be extremely popular with regular full houses.

**“Christmas is just around the corner” is a well-worn cliché.....but having said that, at the time of writing, there are only 16 shopping Saturdays before the Village Hall Christmas Market on 2<sup>nd</sup> December. This is always well attended by both stallholders and customers alike. If you would like to book a stall then contact the Market Manager, Kay, sooner rather than later.**

In order to guarantee a place, our Autumn market dates are:

- Saturday 2<sup>nd</sup> September
- Saturday 7<sup>th</sup> October
- Saturday 4<sup>th</sup> November

If you are someone who has been thinking about starting, or restarting, a regular class of any sort, the hall currently has vacancies on Monday evenings, most Tuesday and Wednesday daytimes and Thursday evenings. Our costs are very competitive - £10 an hour for the main hall and £6 an hour for the meeting room. Both include full use of the kitchen.

On Saturday 2<sup>nd</sup> September, to coincide with the monthly market, Winkleigh Parish Council is holding a “Being Part of Winkleigh” event in the Community Centre where organisations, including the Village Hall, will be showcasing what they have to offer

residents and visitors. The Village Hall will be represented and will show what the hall can be used for, both existing classes and future potential. If you are visiting the market then cross the road and pop in.

*Tony Aston (Chair)*

**Contact details:** Committee, Helpers and Movie Nights – Tony – 07946 490967

Market Manager – Kay – 01837 83248

**WINKLEIGH VILLAGE HALL  
MOVIE CLUB – AUTUMN 2023**




| WHEN                                 | MOVIE                  | RATING |
|--------------------------------------|------------------------|--------|
| FRIDAY SEPT 8 <sup>TH</sup> 7PM      | ROCKETMAN (2019)       | 15     |
| FRIDAY OCT 13 <sup>TH</sup> 7PM      | A KNIGHT'S TALE (2001) | PG     |
| FRIDAY 10 <sup>TH</sup> NOVEMBER 7PM | RED JOAN (2018)        | 12     |

**Entry will be by contribution on the door to Village Hall funds**  
**Light refreshments will be available**  
**Maximum 35 seats so PLEASE BOOK YOUR PLACES BEFOREHAND with Tony and Kay on 01837 83248 or 07946 490967 or [tonyaston1953@gmail.com](mailto:tonyaston1953@gmail.com)**

**FRIDAY 8<sup>TH</sup> SEPTEMBER**  
 Doors open 6.30pm for 7pm screening  
 Pay-bar and refreshments available.

**WINKLEIGH VILLAGE HALL**



**ENTRY BY VOLUNTARY CONTRIBUTION TO HALL FUNDS ON THE DOOR**

**ROCKETMAN**

**15** Warning – contains strong language

## Winkleigh Warm Space

Winkleigh warm space will be on a different day this winter. Wednesday from 12 till 1:30, still the same, but a good mid-week roast.

Everything has gone up in price as you are all fully aware, so once again we ask you pay what you can and all profits will go back into the community. Either helping with fresh meat and food vouchers or helping with electricity.

Anything left over will be used for Kids Fun Days and our fabulous seniors.

We look forward to seeing you on October 4<sup>th</sup>. See you soon.

*Aly & Margaret*

## Pat (Delia Patricia) Mincher RIP



Pat was born on 17<sup>th</sup> February 1930 at St. Georges Hanover Square, London. Her surname was Wheaton and she had two sisters, Shirley who we got to know well when she came to live in North Tawton, and Brenda.

Pat and Shirley were evacuated to Devon during the Blitz, but not treated nicely, so their father collected them and they were sent north, but not without seeing the effects of the raids in London which affected Pat; she made a quilt in her last years of the sights she saw, also recounting and answering questions for the Scouts about her experiences some years ago.

She met and married Peter Norman Mincher (a policeman born 1926) on the 25<sup>th</sup> December 1948 in Battersea London, and they went to Birmingham (Peter's home) to live. Here Pat worked for a time in the Birmingham Dental Hospital. They had three children, Lynda, Valerie and Peter, and Peter (Snr) became a police superintendent.

On retirement in the early 1980's Peter and Pat moved to Winkleigh in Barnstaple St. and involved themselves in activities and groups around the village including the church, Peter was a secretary for the Parochial Church Council, and both enjoyed outdoor Bowls. Pat joined the Over 60's (now the Friendship Club), Girl Guides, Women's Institute and Church Wives. Peter died in 2003.

Pat was still organizing the Xmas raffle hampers in November in the Village Hall, for the Church Wives up until 2019, just before the pandemic. She also ran the Taw Valley Quilters for many years, and was an original member of the group. She made a quilt for every grandchild when they were married, and had many great-grandchildren, making them cot quilts. Many will also remember her for the Cancer Research Coffee mornings which ran for over 30 years and which again she managed for a long time.

Unfortunately Pat suffered a broken hip during the pandemic and with her hearing difficulties became withdrawn so did not join in any of her activities and we saw less of her. She then had another fall and broke her pelvis earlier this year and died in hospital in June. We send our sympathies to her large family.

*Margaret Ferguson*

*[Editor's Note: Recently Cancer Research UK mandated that their volunteers should undertake compliance training, which none of us wanted to do, and also noted that too large a proportion of the money raised was going on weekly running costs. Consequently we agreed to close the group along with its local bank account. To ensure that the Coffee Mornings continue as a sociable fund-raising endeavour, the group is now known as Winkleigh Community Coffee Mornings with a new bank account and it will raise money for local charities.]*

## Winkleigh Singers News



The Winkleigh Singers

Registered Charity  
Number  
117121

The choir are taking a well-earned rest after their enthusiastic performance of Purcell's opera "Dido and Aeneas". This collaboration with the wonderful South West Baroque Players was well-received by the sell-out, packed to the rafters, (oops-nobody call Health and Safety, oh go on then -bung in a few more chairs) by the audience who definitely received their full money's worth, plus several hundred kilos of lemon drizzle cake and a caramel square if they so desired.

Flushed by this success TWS will be raring to go once more come autumn, when they are looking to swell their number. To this end they are holding a free workshop on 11<sup>th</sup> September exploring the madrigals written in honour of Queen Elizabeth I - "The Triumphs of Oriana". There is no audition for the choir, but potential members are welcome to do a free three week trial to find out if they are right for the choir (and, of course, if the choir are right for them). This workshop would count towards the trial period- so do come along if you want to unleash your inner choral beast, though that said your beast will need to be able to read music. Pre-booking is required for the workshop using the form at <https://www.winkleighsingers.org.uk/workshops-and-open-rehearsals/>

See our website [www.winkleighsingers.org.uk](http://www.winkleighsingers.org.uk) for more information about joining the choir.

As winter arrives we will be working on our Christmas music for the Festival of Nine Lessons and Carols to be held at St Michael and All Angels Church, Great Torrington on Sunday 17th December at 6.30 pm. This a free event being a church service with a retiring collection.

Next year in 2024 we celebrate our fortieth anniversary and so have some even more splendid concerts planned to mark such an impressive milestone. Whether as the audience or the choir we would love you to join us.

*Roland Smith*



North Tawton EX20 2DH  
[www.ashridge-court.co.uk](http://www.ashridge-court.co.uk)  
01837 880192

### **Slow-grown, Grass-fed Beef**

Locally raised beef from just £10 per kg

Free local delivery (min 3kgs)

### **Dry Logs & Sawn Timber**

Selection of local hardwoods

Contact Carolyn 07872 598 659

### **Ashridge Great Barn**

Pop-Up Restaurant

Friday 22 & Saturday 23 September

More details to follow - see Facebook

## Winkleigh Volunteer Service

Winkleigh Volunteer Service is a small band of willing people who are able to take others to medical and other essential appointments. Whilst the demand for the service is growing week by week, sadly the number of volunteers has not increased. We need more volunteers, if we are to keep this essential service going. If you are interested in helping the service please ring me on 01837 682616 or 0745536514477.

If you need help please ring and we will do our best to support you. Please give as much notice as you can and alert your driver to any mobility or other issues, which will help the volunteers give you the best support they can. Our volunteers give their time freely but we do charge 50p per mile for fuel and wear and tear on the owners' cars.

Thanks to the generosity of people in the village I now have a selection of various sizes incontinence pads which can be bought singly or in small quantities at cost. This is to save people having to pay a volunteer mileage all the way to Okehampton or Crediton in an emergency, if your usual ones don't arrive in a timely fashion, as has happened in the past. Just ring 01837 682616.

May I also take this opportunity to thank all my volunteers for the good work they do.

*Angela Findlay*



**SAM'S CIDER**  
THE PROPER DEVON CIDER.

Celebrating  
100 years  
of cider being  
made on site

Makers of award-winning proper Devon cider  
www.winkleighcider.co.uk info@winkleighcider.co.uk Follow us on Facebook & Twitter  
You can visit us at Winkleigh Cider Company, Western Barn, Hatherleigh Road, Winkleigh, Devon. EX19 8AP  
Onsite gift shop and local produce



## Winkleigh Church Flower Ladies

At long last we had a very informal meeting in church to discuss future plans. We decided to invite any member of the community to help us fill the church with flowers for Harvest Festival. The arrangements may be displayed in any type of container large or small in autumn colours. Someone will be in church between 11.00 and 12 noon on Friday 22<sup>nd</sup> September to assist with the contributions. Tea & Coffee with light refreshments will be available.

**We are also having a coffee morning on Tuesday 26<sup>th</sup> September from 10.30 – 12.30 as a fund-raiser when all floral displays will be on view.**

**Should you need any assistance to complete an arrangement please contact Marcia on 01837 83734, or Linda on 01837 680040.**



### TEN ACRES VINEYARD CAMPING

- 10 FREE LOCAL WINE DELIVERIES to Winkleigh and surrounding area on Fridays 4-7pm or collect from us by appointment.
- 10 GUIDED VINEYARD TOURS & WINE-TASTING from 1<sup>st</sup> May - 30<sup>th</sup> September every Saturday at 4.30pm. Private group tours also available (min 6 people/the cost of 6 people). Booking essential for all tours.
- 10 CAMPSITE & DEVON WINE SHACK open 1<sup>st</sup> May - 30<sup>th</sup> September. For tents/small campervans. Glamping also available. Booking essential.

Order wine/gift vouchers and book glamping/camping on our website. Contact us for vineyard tour booking info and availability.

W : [www.tenacresvineyardcamping.co.uk](http://www.tenacresvineyardcamping.co.uk) E : [tenacrescamping@hotmail.co.uk](mailto:tenacrescamping@hotmail.co.uk)  
T : (01837) 83892

## Airfield Garage Car Show - 2023



Wow what a day! Although we got off to a damp start it certainly didn't dampen any spirits. We had a turnout of over 200 vehicles: a great variety of cars, tractors, buses and even cider lorries!!! This is the second time Airfield Garage has run this show and it has really taken off. Everyone was saying they can't wait for next year so it looks like it has become an annual event.

The car show was set up to raise funds for our local community and charities. Last year we raised £500 to give away, this year it was a whopping £1500. We split this amount with £500 to Winkleigh Fair and £1000 to the Guide Dogs, Okehampton branch.

THANK YOU! To everyone who came on the day, supported us and made the event what it was, a huge thank you to Western Event Hire, LHSP Audio Visual, our class sponsors, Sam's Cider, Devon Plant Hire and Seven Stars Pub, our fantastic volunteers especially Dan who drove the open top bus around the village every half an hour and to the park and ride!!! See you next year: Saturday 8th June 2024. For enquiries

or more information please email [nicky@airfieldgarage.com](mailto:nicky@airfieldgarage.com)

*Nicky Brewer*



### Kinangop Cattery

4-star licenced small cattery

Very high standards

Individual attention

Winkleigh Devon EX19 8DN

Phone 07748 608 308

[kinangopcattery@gmail.com](mailto:kinangopcattery@gmail.com)

[www.kinangopcattery.co.uk](http://www.kinangopcattery.co.uk)

## Winkleigh Allotments – Why not grow your own?



The Winkleigh Growers are a friendly group of committed gardeners who cultivate plots on a fenced site next to Winkleigh Sports Centre. There are several whole and half plots available at the moment at a cost of £60/ £30 per year. We have water and wheelbarrows on site and vehicle access for most of the year. **If you are interested in joining**

**us and have the time and the energy to keep a tidy and productive plot, please contact Catherine Knight on 07816 608819 for a chat and a site visit.**

## Community First Responders

Readers of Distinctly Winkleigh will be pleased to know that a new member has joined Winkleigh's team of first responders. Having completed her training, a local lady will now be available to help provide Emergency Support in the local area.

These wonderful volunteers not only give emergency life support during cardiac arrest but are often sent by South West Ambulance Service dispatchers to help in various medical situations. Their fast response means those who need it can receive support and reassurance until an Ambulance Crew arrives. This assistance is vital in rural areas where Ambulance Crews can be hard pressed to meet response times.

*Name withheld by request*



**The PC Geek** *your computer...*  
*not working got a virus*  
*Collecting dust in the corner*  
**call Andy Carnegie**

PC repairs  
Health checks  
Upgrades  
Web Design  
Office/admin services  
New and refurbished computers  
Established 15 Years

£48 first hour  
then  
£12.00 every 30min

  
www.tpcgeek.co.uk

Tel: 07903 566861  
Email: tpcgeek@hotmail.co.uk

## ***The Life of a Locum Clerk & Goodbye from Lorraine Wheeler***

In the middle of January, I was approached by Cllrs Odulinski and Findlay to assist the Council as Locum Clerk, due to Benjamin Roth (who had been in post a just over a year) leaving to concentrate on his studies. I subsequently took over the post on 31st January. I had relocated to Launceston last July leaving my friendly, organised, little Hampshire Council behind, and had taken six months off from Council work to settle into West Country life with my husband.

As is always the case with Locum work, you take over at the busiest time, with the end of the financial year looming, followed by the dreaded Internal and External Audit, the Annual Meeting of the Council and this year, local elections to boot, however I love a challenge.....!

The Elections have brought to the Council, some brave, energetic and enthusiastic new Councillors and sadly said goodbye to some longstanding, very productive Members with a wealth of knowledge and history of the Village – who are all very much appreciated by Clerks, new to the area with little or no local knowledge.

The Council has now resurrected its working groups and representatives to outside bodies, all of whom are working hard to restore faith in the Council and promote the good work it is doing and has historically achieved, the Neighbourhood Plan being an excellent example.

# Adam of Eden Tree Care



A friendly, family run company aiming to provide a range of high quality arboricultural services to our customers trees.

**Services include:**

Tree Removals / Dismantles  
Tree pruning, reductions, thinning, shaping and dead wood removal  
Hedge trimming  
Stump grinding  
Tree planting

All work is insured to £5million, complies with relevant British standards and is carried out by appropriately trained and equipped professional arborists

**CALL NOW** for friendly, professional advice and to arrange a **Free no obligation quote**

**TEL: 07398268877**

**Email: adamofedentrees@gmail.com**



**Check us out on facebook and instagram: @adamofedentrees**

There are three vacancies for Councillors currently being advertised and I would encourage you to consider getting involved and helping to make a difference to your village community and assisting the Council to move forward with its many and varied projects in the pipeline and to bring your own ideas to the table too, of course! I have found the Councillors to be a very open, friendly, helpful and inclusive bunch, who are extremely keen to move the Council onwards and upwards; however, more hands are always needed.

The life of a Locum Clerk is a challenging one, working with and advising a group of new Members (to you and to the Council), in a new area and in my case a new and unfamiliar County. It is similar to starting a new job each and every time! However, Local Council Legislation remains the same countrywide (with the exception of Wales) and all of the Councils I have worked with face the same issues and problems, there isn't much I haven't seen although, there is always something new to learn from every placement, which is what makes the sector so interesting.

I have very much enjoyed my time with Winkleigh Parish Council and would like to thank all those Members of the Council and Members of the Public I have come into contact with during the course of the last six months. Winkleigh is a lovely little village and community to be cherished and nurtured. It has been my privilege to serve you all.

By the time you read this article, your new Clerk will be in post and I will have moved on to a much needed holiday and a new Locum post in the autumn with any luck. Please welcome your new Clerk, *Anna Clarke* and I wish her luck in her new role.

*Lorraine Wheeler*

# i Clean Devon Window Cleaning

**WINDOW CLEANING, GUTTER CLEARANCE & CLEANING, FACIAS, SOFFITS & CONSERVATORIES.**

**Call Paul @ 07514 – 740712 for a no obligation quote.**

Email [paul@icleandevon.co.uk](mailto:paul@icleandevon.co.uk)



[WWW.FACEBOOK.CO/ICLEANDEVON.CO.UK](https://www.facebook.co.uk/icleandevon.co.uk)

Covering Winkleigh/ Chumleigh/ Dolton/ Roborough/ Hatherleigh & surrounding villages.



## Kid's Fun Afternoon

Well what a turn out we had for the Kids Fun afternoon on the Thursday of half-term at the Winkleigh recreation/sports centre!! Well over 100 people turned out. We again provided free food for the little ones and an affordable meal for adults!! This was possible because of the donations from the Coronation three-course meal. So not only did we support the North Devon Hospice we gave back to our community.

The grass out back was well used by all who came. The bouncy castle supplied by Bounce & Beyond and the scooters from Winkleigh Fair were never empty.

My crew, Kath, Annie, Sophie and an injured Margaret worked their socks off in the kitchen! The wonderful Deanne who came for a cuppa was off to the shop for frozen chips not once but twice. The Mad Butcher came up trumps when I did my Gordon Ramsay impression down the phone for more chicken, they also made me jumbo sausages special for the kids. Kings Arms ordered my burger buns for me, I purchased the little gifts from the Post Office, so you see Winkleigh Warm Space is true to its word: we support our community in everything we do where ever we can.

There will be an afternoon tea for the seniors of the village in August, which will be free, due to the sale of adult meals at this event and kind donations. So it will not be long till we see you again, for now Love Winkleigh.

*Alison Leah*



**Spirebourne Limited**

Liquid Waste Disposal and Drainage Co.

### EMERGENCY CALL OUTS

Septic Tank/Cess Pool Emptying – Any Size  
Grease Traps  
Drain Blockage Clearance  
Various Commercial Liquid Waste Disposal  
Servicing  
CCTV Drainage Surveys  
Pump Repairs & Renewals  
Installation of Septic Tanks & Sewage  
Treatment Works  
Mantair Units

**FREEPHONE 08000 855 185**

spirebourne@hotmail.co.uk  
www.spirebourne.co.uk

## Need Help In The Garden?

**RHS Qualified, Experienced Gardener**

All Aspects of Garden Maintenance

Planting Ideas

Year Round Reliable Service

Call Maxine on 01837 680039 or 07815 309023



## FORTHCOMING ATTRACTION

Okehampton Choral Society together with Bondleigh Barn Band (with 40 instrumentalists -more like an orchestra) will be presenting a fun "SINGALONG" at 3 pm on Saturday 14<sup>th</sup> October, in Fairplace Church, Okehampton.

Admission will be FREE - with a retiring collection to be divided equally between the fund to keep the Christmas Lights on in Okehampton and the Ukraine Humanitarian Appeal.

Songs from the old Music Hall, from the theatre, from the sea and from around the world will be suitable for families and folk of all ages. We hope you will join us in a relaxed and cheerful frame of mind, ready to enjoy yourself, laugh and join in the fun. Make a note in your diary now and come along bringing your friends.



## AIRFIELD

**General Maintenance  
& Repair Garage**

- MOTs • Vehicle Diagnostics
- Clutches & Cambelts • Brake & Brake Repair
- General Maintenance • Air Conditioning
- Servicing • Bodywork & Restoration



**01837 682 678**  
**[www.airfieldgarage.com](http://www.airfieldgarage.com)**

## Local Press Snippets

**50 years of The South West Coast Path.** The South West Coast Path was celebrated by relays of walkers starting from Minehead on 12 May and finishing at Royal William Yard in Plymouth on June 15. Hundreds of volunteers took part in celebration of the longest and most popular walk in this country and one of the World's greatest hikes. **The Moorlander** July 21.

**Protest At Mobile Library Cuts.** Torridge District Council has voted unanimously to question Devon County Council's decision to axe the mobile library service. **Councillor Cheryl Cottle-Hunkin is championing the protest highlighting its need for the elderly and disabled and non- motorists in a rural area poorly served by public transport:** A petition has been set up to save what is a 'lifeline' for many. **N.D. Journal** July 13.

**Heritage Watch.** Is a scheme to raise awareness and prevent crime or damage to the thousands of historic sites across Devon and Cornwall. **PC Julian Fry Rural Affairs Officer** urges people to get involved and act as eyes and ears in the community to protect our historic environment. The photo of a vandalised air control tower is used as an example of the problem. **Western Morning News** July 8

**Active Travel Project.** West Devon Borough Council, has received £200,000 to fund a project on Active Travel, which will be targeted on improving cycling and walking throughout West Devon encouraging residents to make greener travel choices. **An urban design specialist has been commissioned to consult and draw up designs.** **Okehampton Times** July 13.

**The Great Fire Of Crediton 1743.** Crediton museum is hosting a grand display and walk around experience of the enormous fire that engulfed and destroyed so much of the town. **Central to this ambitious project is the eighteenth century map of Crediton completed just before the fire so it is an extraordinary time capsule.** Haywards Primary School and Queen Elizabeth School have contributed to this ambitious community project. This display continues at Crediton Museum until October 31. **Crediton Courier** July 6.

*Penny Griffiths*



The advertisement banner features the Gilbert Stephens Solicitors logo at the top, which includes a green 'gs' monogram and the text 'gilbertstephens' in a green serif font, with 'SOLICITORS' in a smaller, black sans-serif font below it. The background of the banner is a green gradient with a silhouette of a family (two adults and a dog) walking. Below the logo, the text 'Solicitors' is written in a large, white, sans-serif font, followed by the tagline 'Legal advice for every chapter in life' in a smaller, white, sans-serif font. At the bottom, the contact information '01363 775 566 / law@gilbertstephens.co.uk' and the website 'gilbertstephens.co.uk' are displayed in a white, sans-serif font.



All aspects of pest control undertaken for your domestic, agricultural and commercial requirements throughout Devon.

BPCA Qualified. Experienced Friendly Technicians. Correctly Insured.

Please call Paul - 07714239656 or Ken - 07814306548

Email: [paul@greenvalleypestcontrol.co.uk](mailto:paul@greenvalleypestcontrol.co.uk)

Web: [www.greenvalleypestcontrol.co.uk](http://www.greenvalleypestcontrol.co.uk)



**ROCKET**  
CLOTHING CO.

PRINTED EMBROIDERED  
CLOTHING & MERCHANDISE  
FOR BUSINESS & LEISURE

**0800 622 6711**

[WWW.ROCKETCLOTHING.CO](http://WWW.ROCKETCLOTHING.CO)  
[HELLO@ROCKETCLOTHING.CO](mailto:HELLO@ROCKETCLOTHING.CO)

BEECHLEA INDUSTRIAL ESTATE  
WINKLEIGH EX19 8DH

**cotton & wool**  
WINKLEIGH

Winkleigh's very own independent wool, haberdashery, craft, fabric shop & workshop space



OPEN  
Monday to Friday  
9am - 4pm  
Saturday 9am - 2pm  
Sunday  
Closed for  
crafting!

- Regular Expert Workshops
- Sewcial Sessions Every Tuesday 1-3pm
- Sewing Bee Kids Clubs in the holidays
- 1-2-1 & Small Group Sewing Lessons
- Space Hire for 30+ with Cafe Bar
- Friendly help & advice

Brands include James C Brett, Bobbing, Guterman, DMC, Drops, Anchor, Pony, Hemline, Trimits, Milward, & much much more!

Find US...

At the front of Beechlea Industrial Estate  
Winkleigh, EX19 8DH

**0800 622 6711**

[www.cottonandwool.co.uk](http://www.cottonandwool.co.uk)  
[sew@cottonandwool.co.uk](mailto:sew@cottonandwool.co.uk)

## ACE Archaeology Club News

Our last article started with a note about the days getting longer, now they are getting shorter and with the weather being rather mixed, there is a definite feel of autumn in the air!



The last week of July and the first week of August saw us digging at Moistown again. We have had some new diggers joining us this year which has been a treat. We also had younger people, which is really good, both for us and also for the long term future of archaeology and the history of our area. We do have to have any under 16s accompanied by their responsible adult though. Our insurance won't let us do otherwise.

We pulled out all the stops, well, several of them, to advertise our Open Day and it paid off. We have never had so many visitors just coming to look at what we were doing. It was great to see everyone.

*The usual view of diggers!  
Uncovering the wall that shouldn't be quite there.  
And the wall not quite where we expected it.  
A couple of this years finds.  
A little worked flint blade  
and a jug handle still in the trench.  
Both undated as yet.*



In September, this year, we hope to be able to do a little dig at Coldridge Church. If you have never visited the church it is well worth a visit. A lovely interesting church in a spectacular position. We visited as a group earlier this year and can't wait to get back. Lovely scene and an interesting story

linked to Richard the Third and the Princes in the Tower.

Our year has also seen us on Dartmoor, again and at North Tawton looking for the Romans. For more information take a look at our website:

<https://acearchaeologyclub.wordpress.com> or on our Facebook page.

*Erica Williamson*





## The ultimate coast path challenge

Friday 17 to Sunday 19 May 2024

Walking 60 miles of the South West Coast Path in 3 days

Sign up today [www.chsw.org.uk/hike](http://www.chsw.org.uk/hike)



Making the most of short and precious lives across the South West  
Registered Charity No. 1002234



# Jackson

## Plumbing & Heating

**Oil Fired Boilers & Ranges  
Serviced, Maintained  
& Repaired.**



**City &  
Guilds**

Fully Insured • All Work Guaranteed

**Simon Jackson**

**01769 520846**

**07969 906220**

[jackson.plumbing@yahoo.co.uk](mailto:jackson.plumbing@yahoo.co.uk)



Tom Wilkins



07792419427



[wilkinstom18@gmail.com](mailto:wilkinstom18@gmail.com)



Now find **TW Electrical** on Facebook  
[@tomwilkinselectrical](https://www.facebook.com/tomwilkinselectrical)



- ⊙ Fully Qualified and Insured Local Electrician
- ⊙ Re-wires, kitchens, bathrooms, property extensions and new builds, outside lights, testing, consumer unit upgrades and other domestic and commercial work undertaken

Please get in touch for a free quote!



# DOLPHIN

SOUTH WEST **Stair Lifts**  
LIMITED

A local trusted family firm offering friendly, impartial advice on your stairlift or lift requirements - enabling you to stay in the home you love



**01363**

**776486**

Website: [www.dolphindevon.co.uk](http://www.dolphindevon.co.uk)

Email: [info@dolphindevon.co.uk](mailto:info@dolphindevon.co.uk)



Lords Meadow Industrial Estate, Crediton, EX17 1EU

## **NEW EDITOR WANTED**

**Godfrey, the Editor of DISTINCTLY WINKLEIGH is retiring very soon, so the WINKLEIGH SOCIETY is looking for a new editor or editorial group who would enjoy formatting, editing and compiling adverts & articles for our quarterly magazine.**

**It is a very worthwhile and rewarding role. Help and support can be given.**

**If you are interested in making sure that this wonderful asset for the Parish keeps going, please contact a member of the Committee (see back cover of each edition of Distinctly Winkleigh) or contact Penny Griffiths.**

**EMAIL: [penelopegriffiths@googlemail.com](mailto:penelopegriffiths@googlemail.com)  
Or PHONE 01837 83407**



**Qixx**

Winkleigh

**01837 83229**

## **Electrical Contractors**

- Rewires, New Builds, Extensions
- Consumer Unit Upgrades
- Showers, Cookers, Heating
- Internal / External Lighting
- Sockets & Telephone points
- CCTV & Networking
- Testing & Inspection (inc PAT Testing)

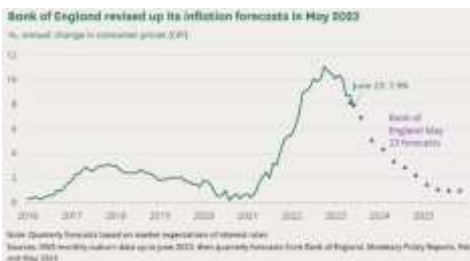


## What's On Diary – September – November 2023

*All dates & details are believed to be correct at the time of going to press. Please send details of your events to [articles@distinctlywinkleigh.co.uk](mailto:articles@distinctlywinkleigh.co.uk). For up to date information (if DW has been notified of any changes) see the online diary at [www.winkleighonline.com](http://www.winkleighonline.com).*

| <i>September</i>  |   |
|---|---|
| <i>2<sup>nd</sup> from 10 am to noon</i>                | Village Hall Monthly Market   |
| <i>2<sup>nd</sup> from 10 am to noon</i>                | Winkleigh Community Centre – Being part of Winkleigh  |
| <i>2<sup>nd</sup></i>                                   | Family Festival, Recreation /  Sports Centre  |
| <i>6<sup>th</sup> &amp; 20<sup>th</sup> - 2 – 4 pm</i>  | Memory Café – Community Centre  |
| <i>11<sup>th</sup></i>                                  | The Winkleigh Singers - Workshop  |
| <i>8<sup>th</sup> &amp; 22<sup>nd</sup> at 7.30 pm</i>  | Four Seasons Bingo  |
| <i>19<sup>th</sup></i>                                  | Britannia leaves Winkleigh on route to Exeter Basin   |
| <i>19<sup>th</sup> 2 – 4</i>                            | North Devon Heritage Centre Visit, Barnstaple   |
| <i>24<sup>th</sup> 4.00 pm</i>                          | Harvest Festival –Parish Church (followed by tea)   |
| <i>24<sup>th</sup></i>                                  | Britannia arrival ceremony at Exeter Quay   |
| <i>26<sup>th</sup> from 10.30 – 12.30</i>               | Coffee Morning – Parish Church – Fund-raiser  |
| <i>October</i>  |   |
| <i>1<sup>st</sup> &amp; 8<sup>th</sup> at 7.30 pm</i>   | Winkleigh Morris – Community Centre   |
| <i>4<sup>th</sup> noon till 1:30 pm</i>                 | Winkleigh Warm Space and roast – Village Hall   |
| <i>7<sup>th</sup> from 10 am to noon</i>                | Village Hall Monthly Market   |
| <i>7<sup>th</sup> afternoon</i>                         | DW Posties Thank you Tea at Fiona's Kitchen   |
| <i>4<sup>th</sup> &amp; 18<sup>th</sup> - 2 – 4 pm</i>  | Memory Café – Community Centre  |
| <i>8<sup>th</sup></i>                                   | Equestrian & Tool Sale, Recreation /  Sports Centre   |
| <i>13<sup>th</sup> &amp; 27<sup>th</sup> - 7.30 pm</i>  | Four Seasons Bingo  |
| <i>14<sup>th</sup> at 3 pm</i>                          | Okehampton Choral Society & Bondleigh Barn Band – Singalong – in Fairplace Church, Okehampton |
| <i>November</i>   |   |
| <i>4<sup>th</sup> from 10 am to noon</i>                | Village Hall Monthly Market   |
| <i>10<sup>th</sup> &amp; 24<sup>th</sup> at 7.30 pm</i> | Four Seasons Bingo  |
|   |   |
| <i>12<sup>th</sup></i>                                  | Antiques Fair, Recreation /  Sports Centre  |
| <i>25<sup>th</sup></i>                                  | Christmas Market, Recreation /  Sports Centre   |

## Financial Focus – *Fractured Markets*



Disclaimer: The author is an active, regulated Director and the founder of Moor Independent Financial Advisers Ltd, a local, independent financial planning and investment management firm serving private clients and trustees. This guide is for information purposes and does not constitute financial advice, which

should be based on your individual circumstances.

*The value of investments may go down as well as up and you may get back less than you invest. Past performance is not a reliable indicator of future performance.*

The global economic growth story has continued to fragment over the past quarter, with countries and regions faring quite differently over the course of the year to date. For example, [China has been disappointing so far this year](#) and some economists consider it will miss its self-imposed growth target of 5% by year end, which would be the second consecutive year the growth target has not been achieved, whilst in [India growth remains buoyant](#) with a full-year growth estimate revised upwards to 7.2% in a recent Reuters poll.

**TUE-FRI - 9AM - 5PM**  
**SAT - 9AM - 4PM**  
**SUN - 10AM - 3PM**  
**CLOSED MON**



**PET, HOME & GARDEN SUPPLIES**

**THE OLD AIRFIELD**  
**WINKLEIGH**  
**EX19 8EZ**  
**NEXT TO JONESY'S CAFE**

YOUR ONE-STOP ESSENTIAL SHOP!

Find us on  
**FACEBOOK**  
@ophairfieldleigh

- WILD BIRD FOOD ● PEANUTS ● FAT BALLS ● TREATS
- PET FOODS ● LITTERS & BEDDING

JOIN OUR  
**LOYALTY**  
SCHEME!

- TOILETRIES ● BIN LINERS ● CLEANING PRODUCTS ● STATIONERY
- COOKWARE ● DIY PRODUCTS ● PAINTS & BRUSHES ● GREETINGS CARDS
- COMPOST ● BARK CHIPS ● FENCE & WOOD CARE ● PLANTERS
- SEEDS ● PLANT FOOD ● TOP SOIL ● PEST CONTROL ● SMOKELESS FUEL

NOW STOCKING...

- HERBS ● SPICES ● DRIED FRUIT ● PULSES ● FLOUR ● OATS

...AND SO MUCH MORE!!!

POP IN AND SEE US - WE'D LOVE TO SEE YOU!

TEL: 01837 680084



One big story of the quarter in the stock markets has been Artificial Intelligence (AI). AI technology uses computer algorithms and the software programs aim to mimic the human ability to learn, interpret patterns and make predictions. The newest forms of AI can also generate content. One example of this technology, [ChatGPT](#), uses AI to produce humanlike responses to search queries, based on data it has collated from the internet. Ask it to solve a complicated mathematical question and it may complete it in seconds. It can instantly translate a foreign language text into English. You can give it an inventory of what is in your refrigerator and it can produce more than a dozen recipes from those contents. The possibilities are almost endless; however, although sophisticated AI systems, such as ChatGPT, were released some months ago, it appears that the potential impact these systems could have across multiple sectors is only beginning to become fully understood and, more importantly, priced in, by the marketplace. For example, drug companies are now using generative AI to design properties or functions of protein models that target diseases. Many technology experts also predict huge changes to the way internet search engines will operate in the future, meaning that AI offers a potential for serious disruption to the big players, such as Alphabet (Google). The explosion of interest in the technology has recently driven huge gains within the S&P 500.

Closer to home, the UK is starting to feel the effects of consecutive interest rate rises, with [house prices tumbling 3.8% in July](#), the biggest fall since July 2009, whilst [UK factory output is also down sharply](#), as reported on August 1, 2023. Mortgage rates have eased from their peaks this year however, with a two-year now 6.81% and a five-year averaging 6.34%. Some are reading this as a sign that we have reached a pivot point, or the peak of the rate rising cycle, with the forthcoming BoE rate decisions expected to be either no change, or a revision downwards. [Inflation also dropped to 7.9% in June](#) which surprised many economists anticipating a reading of 8.2%, according to Reuters. Whilst the BoE may pause or reverse its interest rate increases moving forward, others believe it is not yet finished raising interest rates.

In the United States, which continues to defy the recession predictions echoing from earlier in the year and continuing to this day in many quarters, an announcement was made on 10<sup>th</sup> July by Michael Barr, the Federal Reserve's vice-chair for

|   |  |
|---|--|
| <b>COVERING ALL EXCAVATIONS AND GROUNDWORKS<br/>BOTH LARGE AND SMALL PROJECTS AT COMPETITIVE PRICES</b> |  |
|                      | <b>FULLY INSURED<br/>HEDGE-TRIMMING FLAIL &amp;<br/>CIRCULAR SAW<br/>FIREWOOD PROCESSING.</b>  |
|   | <b>CALL MARTIN ON 07817 46420<br/><a href="http://WWW.MPCONTRACTORS.CO.UK">WWW.MPCONTRACTORS.CO.UK</a><br/>FACEBOOK: MARTIN PARISH<br/>CONTRACTING</b> |

supervision. He declared that the USA's largest banks would have to increase capital by "two percentage points", which we understand to mean that their capital-to-risk-assets ratios will have to rise by 2%. Whilst the aim is to strengthen the big banks prior to the losses they may incur in a forthcoming recession, unfortunately this potential benefit is bought at the certain cost of causing banks to restrict risk assets in the short term; this may be interpreted to mean further restricting of lending to companies and people and reducing the availability of credit. The unintended effect of this statement may therefore be to increase the risk of a recession in the first instance and potentially compound the effects of any recession that may yet occur.

Overall, the global financial picture is becoming increasingly complicated as different countries slow down whilst others continue to grow. As China falters, Malaysia, Vietnam and other 'frontier' economies continue their own growth stories. The US also defies recession, as does the UK, whilst the Eurozone is already in recession. The macro picture is the global economy is anticipated to grow by 2.5% - 3.0% this year. However, for amateur and professional investors alike, it remains an exceptionally difficult investment environment to navigate as beneath the macro picture, the complications persist.

As an example, at a glance the [S&P 500 grew well in the first half of the year, up 16.9%](#) - but [73% of that growth was driven by just seven companies](#). These seven firms gained \$4tn+ between them in the first half of 2023, more than the GDP growth of Japan (third largest economy). Apple's market capitalisation alone now exceeds that of the entire Russell 2000 index. In short, if you were not invested in technology to some degree, the S&P 500 rally of 2023 may have more or less completely passed you by.

A reactionary, fractured and uncertain global marketplace almost certainly offers scope for opportunity, but should be approached with caution. A long-term approach to investing at these junctures may pay dividends. Independent, professional financial and investment advice which offers the freedom to diversify selectively across the marketplace without bias is widely considered invaluable in this type of environment, to ensure you may potentially capitalise on opportunities as they arise.

*Jonathan Cotty, Chartered FCSI, Director of Moor Independent Financial Advisers*



## TAWMIX RECYCLING LTD

Poppy's Field, The Old Airfield, Winkleigh EX19 8DW

[haulage@tawmix.co.uk](mailto:haulage@tawmix.co.uk)

07773 781193

**Kiln-dried Grade A Animal Bedding, 30cu mtrs or 100 cu mtrs.**

**Discounts available for bulk loads.**

## Margaret's 80<sup>th</sup> Birthday Bash



July 24th, 2023 was a special date for me I was 80. But it's only a number! On the Saturday before with a lot of hard work cooking and organising by our daughter Sarah, I had an *At Home* from 11 am until the last one went! It was a wonderful day with between eighty and ninety people going through the house.

The wine flowed and the table stayed laden with food all day. The house smelled like a florist with so many flowers people kindly brought. Thank you.

**My proudest achievement of the day though was the £625 raised for SCaRF Skin Cancer Research Fund. Thank you so much to everyone who donated. It is a small charity with its headquarters at Southmead Hospital, Bristol. It is special to us as Derek has just had**

**to have another operation for Skin Cancer.**

Thank you again to everyone who made it such a special day for me and all my family.

*Margaret Miller*



# Southwest Fixings Ltd

**Agricultural & Building Supplies  
Trade Counter**

- Oils and Adblue
- Fencing Materials
- Workwear & Boots
- Calor Gas
- Animal Health
- Batteries
- Animal Feed
- Nuts & Bolts
- Hydraulic Hoses
- Timber
- Drainage
- Guttering
- Plumbing
- Tools
- Paint
- Tractor & Implement Parts
- Fixings & Fastenings

...PLUS MANY MORE!

*Delivery available!*

Tel: 01837 83492  
Email: [sales@southwestfixings.co.uk](mailto:sales@southwestfixings.co.uk)  
Website: [www.southwestfixings.co.uk](http://www.southwestfixings.co.uk)  
Visit: Beechlea Industrial Est. Winkleigh, EX19 8DH

Open: Monday - Friday  
(7:30am - 5pm)  
Saturday (8am - 12noon)



## *Allison Homes South West - Sponsored Advertorial*

Last year, local housebuilder Allison Homes South West successfully transported and replanted a variety of small trees from its Foxglove View development in Buckland Brewer to High Moor View in Winkleigh.

The project was a massive undertaking by the developer, trees were selected based on size, species, and viability of replanting.

When moving day finally arrived, the trees were carefully lifted out of the ground to preserve the delicate root structures and existing soil. The roots were wrapped with hessian fabric before being transported along 18 miles of winding country roads to Winkleigh.

To give the trees the best possible chance to thrive, it was essential they were transported during the winter months in their dormant period. Almost 10 months on since the replanting took place, summer is in full swing, and the green foliage of the trees is evidence of the success of this project, giving the community something to enjoy for years to come.

Native woods and trees are one of the best ways to help preserve the UK's habitats and tackle climate change. Trees provide many benefits to the environment, absorbing carbon from the air, creating a sustainable habitat for wildlife and insects and improving soil quality.

Michele Jones, Head of Sales at Allison Homes South West said: "We are thrilled that the replanting project has been such a success.

"We decided to relocate the trees from Foxglove View as we felt it was important to preserve and appreciate what we already have. All the trees selected are healthy and have many years of growth left in them. While the project was a significant investment, the environmental consideration was far more important.

"At Allison Homes, we are all about doing things the right way and are proud that the people of Winkleigh are now able to appreciate these lovely trees."

Allison Homes South West is committed to creating thriving communities by supporting local charities, schools and organisations close to their developments.

High Moor View is nestled on the edge of the charming village of Winkleigh and benefits from the stunning views of the Devonshire countryside. The development offers an exclusive range of two and three-bedroom bungalows and two-, three- and four-bedroom homes.

If you are looking to move to High Moor View, pop along to the show home and have a chat with the friendly Allison Homes team. Open for viewings Thursday to Monday 10 am to 5 pm, you can book an appointment by calling 07485 910988 or by emailing [highmoorview@allison-homes.com](mailto:highmoorview@allison-homes.com)

<https://allison-homes.co.uk/development/high-moor-view/moor-view/>

## They Did Go To The Ball!

All the local papers and Devon Live have enthusiastically covered the story of the summer ball for our 16 year olds leaving school (after the rigours of their GCSEs) and *Distinctly Winkleigh* is no different.

Our youngsters have endured a lot with Covid interrupting their education and curtailing social contact. They are due a treat, with the spotlight on them, as they celebrate this significant rite-of-passage after the rigours of their exam marathon.

Chulmleigh School held their Prom at Castle Hill Filleigh: providing a fine backdrop and sense of occasion for them. Resplendent in fine gowns and suited and booted the graduating Chulmleigh pupils staged their arrivals in a varied array and range of carriages from top-of-the-range tractors, vintage motors to soft-top sports cars. By all accounts a great time was had by one and all.

*Penny Griffiths*



*Chelsea Rooke & Rosie Bolt*



*Izzy & Pippy Gale*



*Chelsea Rooke & Freya Kenny*



*Cameron Dart*



## Devon War Girls

MED THEATRE from Moretonhampsted regaled a Winkleigh audience on the old bowling green with tales and adventures of land girls in Devon during World War 2. Hats, umbrellas and fruit punch were required under the baking June sun as the audience gathered on rugs and picnic chairs to enter into the experiences of young women transported from a city to an alien rural setting.

Abby Stobart and Suvi Revell by lightening costume changes, comic use of props and versatile dramatic skills acted out scenarios of the life shocks and transformations



that hard and unfamiliar labour on a mixed Devon farm came the way of the rookie land girls.

But with hard graft came the exhilaration and independence of being away from home, the camaraderie among the Womens Land Army and the joy of dancing with locals and especially with the American G.I.s.

It was lovely to see John Short and Margaret Bridgman in the audience as their mother Marian Short was a land girl who came from Yorkshire to

Winkleigh to be a rat catcher. The experience of land girls was truly transformative for them and the rural communities they joined.

MED THEATRE have been making theatre for over 30 years. Based in Moretonhampsted, they work across the rural moorlands and its catchment area which includes Winkleigh. They perform original work, taking inspiration from local history and stories, which they workshop collaboratively.


*Penny Griffiths*


## The Old Parsonage


B&B and holiday lets



### Contact Carol Jones

 [www.theoldparsonagewinkleigh.co.uk](http://www.theoldparsonagewinkleigh.co.uk)

 [parsonagewinkleigh@hotmail.com](mailto:parsonagewinkleigh@hotmail.com)

 07896 740903

## Summer Term 2023 at Winkleigh Primary School

We have packed so much into the summer term at the School, from the engaging learning we do every day, to the wide range of enriching activities on offer.

It was an energising start to the summer term with our Year 5s going on a three day residential at Skern Lodge in Appledore. The children enjoyed the high ropes, tunnels, assault course, rafting and kayaking. They showed real resilience, determination and independence throughout their time there. It was fantastic to see them throw themselves into new challenges and overcome fears.

We celebrated the Kings Coronation, wearing red, white and blue, and enjoying a school meal special, all together in the school hall.

We've hosted and attended various sporting fixtures against local schools, we've played netball, football, cricket, tag rugby and rounders matches.

We were lucky to have a visit from England Footballer Bex Rayner who demonstrated her skills, showing the children football drills and circuits and teaching them about the importance of nutrition and the positive impact school PE has on children's overall wellbeing.

**Arts & Culture Week in May:** Each class was given a country to focus their learning on for the week, immersing themselves in the culture of their given countries, cooking and being creative with art projects and PE.

Our youngest children in Nursery focussed on Japan, learning about Mount Fuji, printing cherry blossom, writing numbers in Japanese and making sushi! Our Reception children looked at Spain learning flamenco dances and counting in Spanish. Year 1 made Greek temples from art straws and enjoyed making and tasting Baklava. Year 2 learned about Australia's culture and geography, and they made fairy bread and Anzac biscuits. Year 3 dedicated their learning to Mexico, making flags and portraits in the style of Frida Kahlo. Year 4 looked to Italy for inspiration to recreate their versions of the Mona Lisa, and Venetian style masks. Year 5 explored Brazil, learning key facts to create information sheets and rain sticks plus some tasty Brazilian food. Finally, Year 6 learned about India, cooking various curries and creating Rangoli (Paisley) patterns.

During Arts & Culture week, we also accompanied our peers from Kings Nympton Primary School on a whole federation visit to see Demon Dentist at the Exeter Northcott theatre – it was wonderful to experience live theatre and see our friends from Kings Nympton.

It really was a worldwide whirlwind of inspiration and enrichment!

**Trips:** Nursery children visited Quince Honey Farm in South Molton. They enjoyed observing and learning about bees, making candles and tasting different varieties of delicious honey and were able to bring some back with them so others could taste it too.

**Our Reception class;** Owls, took a trip to Bickleigh Railway Centre to enhance our learning about old and new transport – they loved the different train rides around the magic woods and exploring the miniature railway and play areas.

**Year 1** had a great time on their trip to the beach. They had a fantastic day rock-pooling, building sandcastles and just having fun together. The weather was not quite as hot as last year but this did not stop the fun.

**Year 2** enjoyed a fantastic trip to West Town Farm where they took part in a variety of activities including foraging for wild garlic and making garlic bread around an open fire!

**Year 3** went on an overnight camping trip and took part in lots of forest school activities, they also visited Clip & Climb in Exeter and conquered lots of fears. The Year 3s also visited RHS Rosemoor to take part in an interactive workshop about plants and they brought back beans to plant in the school garden. Rosemoor is a valuable educational resource in the local area that we are lucky to utilise.

**Year 4** had a fantastic time on their residential to Escot this term. After arriving and settling into the yurts, the first task was to make it through the maze. With some guidance from the Escot staff, we all made it to the middle without losing anyone! The children then took part in some living history activities where they became Anglo-Saxons for the afternoon. This included dressing up, making bread, carving runes into wood and even having a go at becoming a blacksmith. The children all worked together to make a mallet, bread rolls and an Anglo-Saxon penannular brooch which we brought back to school with us. In the evening, the children gathered around the campfire to roast marshmallows before playing some campfire games.

The children also went on an animal walk around the park and had an opportunity to see many of the parks animals including Arctic foxes, European brown bears and wolves. While in the park, some children took the opportunity to go down the drop slide which many have said was their favourite part of the trip!

**Year 5** travelled by train to visit the Exeter Synagogue to widen their knowledge on the beliefs and traditions people follow in regards to Judaism.

Year 6 went on an epic adventure to London in June. We packed so much in; London Eye, Thames river cruise, Lion King, House of Parliament, Harry Potter Studio Tour, sightseeing and Pizza Express. Plus, learning to navigate on the London Underground!

Then our year 6s took part in their final two trips of the year in July to mark the end of their time at Winkleigh Primary School. We headed to Widemouth for a surfing residential. Upon arrival, and after setting ourselves up in our lovely rooms, we made our way along the coast path to Widemouth Bay for the surfing lesson. The weather was perfect and the waves were strong! We then walked back to the hostel for dinner, a football tournament and a campfire on the beach. The weather held and

the children made their way back to their rooms for a good and long night's sleep. When we awoke the next morning, the weather had changed somewhat. We ate a delicious breakfast and packed our belongings before making our way back along the coast path, in the wind and rain. Due to the conditions, we had the entire beach to ourselves! Wetsuits and body boards on, we entered the water in 40 mph winds. The waves were perfect and it was warmer in the sea than on the beach! The staff at OA Surf Club commented on how well the children behaved and how polite they were when talking to their staff. A lovely thing to hear on their last trip.

Then in the final week of term, we headed to the North Devon Wake Park in Bideford with the **Year 6s**. It was such a lot of fun. The water was very cold - but that didn't stop us all enjoying a fantastic if exhausting adventure. There were many ambushes by children against their caring and patient teachers.

We had a visit from the Dog's Trust. There was a whole school assembly where we were introduced to the charity and learned about how and why dogs are re-homed. There were then in-class workshops which helped us to learn what the 5 happy dog rules are. We learned that it is important to respect dogs when they are eating, sleeping and playing. We also learned what to do if we meet a dog and how we should always ask before stroking a dog. For those who were nervous around dogs, we discussed what to do if a dog approached us and we didn't want to stroke it. The children took away valuable advice of how to behave around and treat dogs, whether it is our own pets or someone else's.

**Wraparound Care:** The Wraparound Care provision that we launched in January is going from strength to strength with numbers attending increasing week on week. This is proving to be a valuable childcare solution for working parents, but also a number of children attend because they love the activities on offer!

We run **Early Birds Breakfast Club** every weekday in term time from 7.45 to 9 am. Children are provided with breakfast and fun activities to kick-start the day.

All Sorts of **After School Clubs** run every weekday in term time with flexible sessions available between 3.30 pm-5.30 pm. Sessions can be booked ad-hoc as needed and can be booked around the enrichment clubs we also offer.

**Support:** We would like to thank Friends of Winkleigh School committee for all their fantastic fundraising. Through their generous donations, we have been able to subsidise the residentials and trips to make them even more affordable.

Thanks also to parents and the local community for supporting the Friends' events. Without this support raising valuable funds, we wouldn't be able to provide the enriching opportunities that benefit all our children.

We are already looking forwards to next year and planning has begun on the 2024 trip to Skern Lodge plus an amazing three-day residential in London.

Find out more about us on the school website where you can find newsletters and photos showcasing our year: <https://www.woodlandfederation.org.uk/winkleigh>

## Winkleigh YFC News



Spring through to summer is never the busiest time for YFC, especially with members being busy with silaging and harvest etc. However, we've still managed to achieve some accomplishments as we draw closer to the end of the YFC year.

Most notably, Mary Lucas Ridge took home a major victory for Winkleigh – representing the club at national level and getting first prize in a fashion make and model competition. Mary is making full use of all the opportunities that YFC offers and is a credit to our club.

The more creative members of the club (definitely not me!) got their heads together in May and constructed a show cubicle for the Devon County Show YFC tent. We had positive feedback from the show judges but unfortunately didn't quite make podium position.

Moving in to June, we met with Chulmleigh and Witheridge YFCs for a friendly rounders competition. This was held by kind permission of the Bonner Family at Burrington Beacon. It was great to socialise with Witheridge and Chulmleigh as they are in different groups to us so we rarely see each other, even though we are so close together.

At the end of June, we held our annual cider and pasty quiz at Winkleigh Village Hall.



This event was very well supported by local people in Winkleigh and I would like to thank everyone that came along and helped the event run so smoothly. **Together we were able to raise £324.80 for charity – a great result.**

Finally, the Tarka group of Young Farmers held its yearly rally which was well

FASHION MAKE AND MODEL NATIONAL CHAMPION! 🏆

Congratulations Mary Lucas Ridge from Winkleigh YFC - what an achievement!





supported by members from Winkleigh – well done to all who took part in activities. By the next time I write the Distinctly Winkleigh update, the club will have had its annual general meeting – choosing club officers for the forthcoming year, formulating a new schedule of events and activities, and deciding on who our chosen charities will be for the money that we raise throughout the year – an exciting time of year for Young Farmers!

For more information about our club or membership, feel free to call me on 07498 972991 or find our Facebook group – Winkleigh YFC.

*Tim Laarveld (Social Secretary)*



**HC Joinery**

Bespoke Joinery Services

Harry Colgrave

Joiner

All aspects of joinery work undertaken.

Doors, windows, repair to neglected doors and windows, door canopies/porches, panelling and restoration projects.

[hcc2010@hotmail.co.uk](mailto:hcc2010@hotmail.co.uk)

01837 83911/07517110668



Summerhayes, Ingleigh Green,

Winkleigh, EX19 8AT

## **MTF CONTRACTING**

**A local experienced service for all your needs**



- Agricultural Fencing
- Garden Fencing
- Tree Surgery
- Landscaping
- Fully Insured and Qualified
- Free no obligation quotes



**T: 01837 83325**

**M: 0777207 8028**

**[www.mtfcontracting.co.uk](http://www.mtfcontracting.co.uk)**



**Moortown Farm, Winkleigh, EX19 8HA**

## Sueno Beauty has MOVED!!!



Gemma & Lauren are proud to share with you that Sueno Beauty now has a brand new premises: Pophams, Castle Street, Winkleigh, EX19 8HU.

Sueno Beauty has grown so much in the last year and the time has now come for us to expand. From what started out as a small Massage and Holistic business 7 years ago above Changes Hair Salon, offering services one day a week to now being a FULL TIME Massage, Holistic & Beauty business, opening up our very own salon is an actual DREAM COME TRUE.

As many of you know we aren't just business partners, we are in fact sisters, sisters that have the same passion within the beauty sector and aspire every day to bring something to the village that allows people to step out of normality for an hour or so and indulge in some self-care.

A small, family run business, in our home village with so much more to come but for now we cannot wait to welcome our lovely, amazing, current/new clients.

*Gemma & Lauren*



## FAREWELL TO WINKLEIGH

Exciting times are ahead for Winkleigh's very own Britannia Sailing Trust, as we set sail on our crowdfunding countdown to Britannia's relaunch. Britannia's restoration journey has been a labour of love for over ten years, five years of them here in Winkleigh! Driven by the dedication of local volunteers and maritime enthusiasts like you. Now, we invite you to be an integral part of her revival. Together, we can raise the funds needed to complete the remaining restoration work and witness Britannia gracing the waters once again.



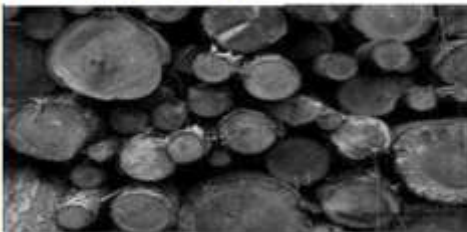
Every penny helps, so tell all your friends about Britannia, ask them to help with a small donation and invite them down to see her arrival ceremony in Exeter on the 24<sup>th</sup> September. Relaunching Britannia after 10 years ashore - a Community crowdfunding project in Winkleigh by Kevin Cranston ([crowdfunder.co.uk](http://crowdfunder.co.uk))

Britannia's grand arrival at the Quay in Exeter is scheduled for the 24th September, and preparations are in full swing. This historic occasion will be a celebration of maritime tradition,

community spirit, and the indomitable human will to preserve our heritage. However, you can see her being craned onto the lorry ready for her journey overland on Tuesday 19 September, starting at 8 am. Be sure to keep an eye on our social media channels and website for further updates on the launch event.

Our esteemed trustee, John Thynne, has recently embarked on a memorable adventure in support of Britannia's relaunch: rowing down the River Thames in a vintage camping **skiff**. **John has brought attention to our cause and symbolized the**

### Local Logs



Dry seasoned hardwood  
All stored under cover & delivered in  
Chulmleigh & surrounding area.

Truck Load £110

Double Load £200

Trailer Load £320

Kindling £5 per net

Martin 07817 464420 [parish@btinternet.com](mailto:parish@btinternet.com)  
[www.mpcontracts.co.uk](http://www.mpcontracts.co.uk)

**courageous spirit of those who once navigated the waters aboard the majestic East Coast Sailing Smacks.** His passion and commitment to Britannia's restoration continue to inspire us all. Read about his adventures on our website.

Meanwhile, our dedicated chairman Kevin Cranston has pledged to swim 1000m in open water in support of our cause. Having only taken up serious swimming four weeks ago, Kevin's challenge is a considerable personal milestone.

**You can support both John and Kevin, as well as donating to our relaunch, on our crowdfunding page. All the money raised through all these causes goes to the same place - Britannia's relaunch.**

**Expedition Thames - an Environment crowdfunding project in Winkleigh by Vicki Samuels ([crowdfunder.co.uk](http://crowdfunder.co.uk))**

**1,000 Metre Swim in Open Water - a Charities crowdfunding project in Stroud by Vicki Samuels ([crowdfunder.co.uk](http://crowdfunder.co.uk))**

**We would like to thank everyone here who has volunteered and helped us to get to this vital stage, and we really hope that you will continue to support us and visit us in Exeter when you can.**

*Vicki Samuels (01837680036)*  
[www.Britanniasailingtrust.org](http://www.Britanniasailingtrust.org)

# Sueno Beauty

Castle Street, Winkleigh, Devon, EX19 8HU

## Beauty

Waxing, Tinting, OPI Manicures & Pedicures, BIAB (builder gel), Lash Enhancements, LVL Lash Lift, Eve Taylor Facial & Advanced Ultra Sonic Micro- Facial Therapy

## Massage

Swedish, Deep Tissue, Aromatherapy, Hot Stones, Warm Bamboo, Pregnancy

## Holistic

Reflexology, Ear Candling, Thai Foot Massage

Tel: 07590233607

Email:

[suenobeauty@outlook.co](mailto:suenobeauty@outlook.co)

Scan here to take you  
straight to our online  
booking app



## Winkleigh Fair Organising Group would like to thank.....

It's been a job to collect all these names but we would like to thank every volunteer and local business that helps to make Winkleigh Fair Week such a unique event.

If we have missed you out of the honours list – we apologise profusely but you know who you are and without your help the fair would not have been the same.....

In no particular order – we would like to thank:

**Kath McArthur, Peter Penny, Beth Williams, Gemma from Cotton & Wool for providing the Attendants T Shirts, Nicky & Andy Brewer, Kathy of Catkin Blooms for the lovely well-dressing and posies for the children, Staff at Winkleigh Primary School, Reverend Helen Blane, Debbie Kennard, Kevin Down and the Methodist Church, Margaret Bridgeman, Archie Bridgeman, Annie Saunders-Dawe, Tom & Colin (the BBQ Legends), Jamie Stewart for lending us the BBQs (again!) Jonny Cash & June Carter Tribute Duo, The Hummingbirds, Evolver, Rich at the Kings Arms for donating the cream teas & some booze, Sheryl Turner and the team at West Ridge Veterinary Practice, Toby at Ten Acres, Adam Buck (aka Bucky), the wonderful person that lets us use their garage every single year for storage, the Community Centre and the Village Hall for being such good sports at short notice, Dave & Nikki Stenson, Crediton Town Band, Winkleigh Morris, Tony Aston & Kay, Rob Baker (for his relentless bunting work every year!), Ryan Turner, Ash & Tracey at Seven Stars, Sarah Goody, Liz Hill, Helena Lewis & Jane Riches for making the wonderful new bunting, the parents and carers of the King & Queen and Attendants'**



## NEW TO WINKLEIGH



### Sports Massage - Injury Rehabilitation - Pain Management

For help with back pain, injuries, tendon pain, fibromyalgia, arthritis and much more....

Scan the QR or call Becky on  
07809 025795 to book





The Main Sponsors all of whom made donations to support the fair:

- The Kings Arms (£300)
- The Seven Stars (2<sup>nd</sup> Raffle Prize & further donation)
- The Post Office (1<sup>st</sup> Raffle Prize)
- Airfield Garage (£500)
- Western Event Hire -for everything amazing that you do year-in, year-out
- The Mad Butcher – for your amazing meat!
- West Ridge Veterinary Practice
- Mid Devon Motors (3<sup>rd</sup> Raffle Prize)
- Winkleigh Village Hall Quiz Night
- Allison Homes – (£367)

Thank you to all the stall holders who reacted so well to the change of plans – you were superb! To those who live in the Square for moving their cars, allowing the bunting and generally being good sports and to every local business that displayed our posters and helped to sell raffle tickets!

Most importantly....to you, the local folk who supported all the events.....and to every single one of you who braved the rain and partied the night away in the Square. You rocked it as we knew you would!!!

From all of us at the Fair Organising Group.....THANK YOU!!!!

*Faye Tompkins / Julie Robinson / Liz Rooke/ Gareth Cowan / Cali Wray-McCann / Tony Kennard / Aly Leah / Ed Laarveld / Christine Newbury / Jane Riches / Jill Clarke*

**LORRAINE – MOBILE FOOT HEALTH  
PRACTITIONER – DipCFHP**

**CALL NOW TO BOOK AN APPOINTMENT  
07841 719690**

**PROFESSIONAL & FRIENDLY SERVICE, OFFERED IN THE  
COMFORT OF YOUR OWN HOME.**

**OVER 10 YEARS EXPERIENCE – ABLE TO TREAT  
LONG/THICK/ FUNGAL NAILS, PAINFUL CORNS, IN-GROWING  
TOE NAILS, CALLUS, VERRUCAS, CRACKED HEELS, GENERAL &  
DIABETIC FOOTCARE**



**Fully qualified and insured**

## Winkleigh Fair Week Highlights

It was another week to remember as Fair Week helped to keep the folk of Winkleigh and the surrounding villages entertained!



We kicked off in relative sunshine with the **opening ceremony** that was very well attended, so thank you all who made the effort to listen to Reverend Helen Blane's blessing and witness the crowning of the King and Queen. Winkleigh Morris were superb with the horse-dance a particular highlight and Crediton Town Band were superb – their rendition of Sweet Caroline being the real crowd-pleaser!  
[ED: See cover photo]

Well done to the children of Winkleigh Primary School who were supremely patient and did a fantastic job.... Fair Queen was Emily Illman

& Fair King was Marshall Lill both dutifully supported by their Attendants - Martha Rhodes, Ruby Cowan, Chloe Hill, Ben Palmer, Jayden Saunders & Isla Phillips.

  
**WINKLEIGH**  
PET CARE

Dog walking  
Home visits  
House sitting  
Groom/Yard work  
*Fully insured and DBS checked*

**Laura Sherring-Lucas**

winkleighpetcare@hotmail.com - 07595249418 - @winkleighpetcare



**Monday saw the Dog Show** battle the rain but it felt like we won in the end with lots of owners young and old putting on their waterproofs to make sure the show was a superb success. We don't let a spot of rain spoil the fun! We even managed a BBQ which was a near miracle!







Tuesday night was Bingo Night and with our very own Aly Leah it was inevitably going to be a laugh-athon and it did not disappoint. Some great fun was had, some winners and some losers but in all, a brilliant, fun evening and that's what it's all about.

## Plastering

All aspects including:

- \*Skimming
- \*Boarding
- \*Insulation
- \*Rendering
- \*Damp Proofing

Also our unique  
"Art Of Plastering"  
Services including:

- \*3D Stone Wall
- \*Wood Effects
- \*Venetian
- \*Feature Walls

## 07956-586778

\*3D Wall art and Acoustics  
Available to buy on our website

## General Building

All aspects including:

- Renovations/Refurbs\*
- Make Overs\*
- Tiling\*
- Decorating\*
- Extensions\*
- Conversions\*
- Landscaping\*
- Interior Design\*
- Resale Consultants\*
- Maintenance\*

Over 20 years experience providing a clean & reliable service  
to the highest standards.  
Incorporated 2008

[www.phoenixcreative.uk](http://www.phoenixcreative.uk)

Contact us for any enquiries, free estimates and advice  
info@phoenixcreative.co.uk  
Visit our website for more details.





The Hummingbirds Trio were reduced to a duo for the **Vintage Vehicle Show** on Wednesday night but that did not stop them from putting on a brilliant show. Some amazing vehicles, a wonderful BBQ and lots of local support meant that the evening was a major success. Winners were: 1<sup>st</sup> Dan Shears, 2<sup>nd</sup> Phillip Burrows, and 3<sup>rd</sup> Archie Bridgeman.

**The Village Quiz and Pudding Night** was a sell-out and even those in last place seemed to have a fantastic night. Puddings were delicious and our Quizmaster was in supreme form! A brilliant night and thank you for those involved in making it happen.

**Fair Saturday** was a challenge with lots of last-minute changes but we didn't let the rain ruin our fun. The fancy dress competition made a welcome return, the games



were brilliant fun and the children seemed to have a great time – lots of smiles and sweets, what else could you want! The disco was a big hit as were the market stalls and cream teas and the BBQ went down a treat!

The last-minute call to ‘go indoors’ proved to be the right one and after much last-minute planning we got the bouncy-castle indoors and we even managed the traditional tug-o-war in the hall!! Well done everyone for making it happen!

Jonny & June packed out the Seven Stars and many a song was accompanied by a hundred back-up singers – not all in tune but who cares!

Evolver were outstanding – taking on the weather in fine spirit and playing on through the rain.

Nothing quite hits the spot like Winkleigh villagers belting out ‘Livin’ on a Prayer’ in the pouring rain! Fantastic spirit shown by Evolver and everyone that was there....we salute every single one of you!

*Until next year...best wishes from the Fair Organising Group*







## STOP PRESS! Winkleigh has a Community Pantry!



Thanks to Harry Colgrave for building it free of charge and Southwest Fixings for supplying the materials. This is something we can all use.

So if you have excess fruit veg or tinned goods you bought because it was buy 1 get 1 free this is where you can share with others. It is at the Community Centre through the green gate.

It is open to all; if you find you need something unusual or have left an item off your shopping list. Please check through your cupboards for things you haven't used (must be in date if relevant). Eggs go in the little top door if your chucks are laying too many for you. Fresh fruit and veg from overly abundant crops are also welcome. (Only things not to donate are fresh meat,

milk, cream, yogurt, butter: fridge stuff - thank you). Support our village families AND check out when you are missing something you need. Excess Local produce and eggs from producers are welcome, Take what you are missing and remember to replace next time you pass.

*Winkleigh! Facebook Page*

*[Editor's Note: the bottles are non-alcoholic, so nothing alcoholic please!]*

### Local Winkleigh Taxi

4, 6 & 8 Seater Vehicle Available  
Local or Long Distance, Airports, Stag

Nights

Wayne

Brad Cars

07846389921

[wavnreieens@yahoo.co.uk](mailto:wavnreieens@yahoo.co.uk)



Local  
Reliable  
Safe



Competitive Rates



## My "Naughty Saucy" Carrot - Jennie GILL

I've grown some lovely Carrots here in Devon  
And they grow to a very good size  
But I think the one in the photo below  
Certainly wins First Prize!

The others each side have grown long and thick  
The variety is known as "Flyaway"  
But I think my naughty, saucy, carrot  
Has just grown and grown in his own different way!

I haven't the heart to eat him  
So I've put him in a pretty pot,  
He's wilting with each day that passes  
But he's made everyone laugh & smile a lot !

I hope he makes YOU smile too!!





The Winkleigh Dragon by Bobby Carter (age 8)



**Quality hardwood logs  
cut to order and kindling.  
All aspects of low impact  
forestry.**

***Call Josh on 01363 83908  
or 07792 906258***

## Word Search

|   |   |   |   |   |   |   |   |   |   |   |   |   |   |   |
|---|---|---|---|---|---|---|---|---|---|---|---|---|---|---|
| Y | P | R | I | B | S | A | K | Q | L | E | G | Q | P | M |
| G | R | O | Y | Y | H | T | P | I | B | V | K | U | B | L |
| F | E | C | O | J | L | T | F | P | V | A | Y | M | C | E |
| V | Y | M | C | V | O | N | S | W | E | S | P | I | N | E |
| F | I | N | G | E | R | S | K | X | T | N | C | S | T | X |
| M | N | Q | S | A | N | N | Q | P | W | O | D | T | L | H |
| B | G | D | H | A | E | L | Q | Q | L | V | N | I | D | Y |
| K | O | T | P | E | R | G | J | P | H | B | K | G | X | U |
| M | Y | R | E | A | H | M | K | W | B | L | K | M | U | H |
| C | M | F | A | E | O | J | K | R | K | U | I | G | L | E |
| M | G | X | A | E | U | O | A | C | B | N | D | G | I | Y |
| K | G | R | H | L | L | I | J | X | H | G | N | T | V | F |
| P | T | G | Q | B | N | F | P | J | V | S | E | W | E | X |
| J | T | A | W | O | Y | E | A | P | D | W | Y | S | R | K |
| P | D | T | M | W | L | G | A | Q | D | H | S | S | U | E |

|          |         |        |
|----------|---------|--------|
| APPENDIX | HEART   | LUNGS  |
| ARM      | KIDNEYS | RIBS   |
| BRAIN    | KNEE    | SPINE  |
| ELBOW    | LEG     | TOES   |
| FINGERS  | LIVER   | TONGUE |

***Solution on Page 69***



Coffee, Cake, Seasonal Flowers, Plants & Eco Gifts

All under one roof @ Bissett's Garage on Exeter Road Winkleigh EX19 8HW

☎ 07870166985 📧 [enquiries@catkinblooms.co.uk](mailto:enquiries@catkinblooms.co.uk) @CatkinBlooms

Pop in & say hello, we are open Tuesdays to Saturdays 9.30am-5pm

We have a Friday Flower Club, seasonal workshops and events, pop in to ask for details

## Sudoku Puzzle

|   |   |   |   |   |   |   |   |   |
|---|---|---|---|---|---|---|---|---|
| 6 |   |   | 5 |   |   |   |   |   |
|   |   |   |   | 4 | 9 | 1 |   |   |
|   | 8 | 9 |   |   |   |   |   | 5 |
| 8 |   | 1 | 2 | 5 |   |   |   | 9 |
|   | 4 |   | 6 |   | 3 |   | 5 |   |
| 5 |   |   |   | 9 | 1 | 8 |   | 2 |
| 7 |   |   |   |   |   | 9 | 1 |   |
|   |   | 8 | 4 | 1 |   |   |   |   |
|   |   |   |   |   | 5 |   |   | 6 |

**Solution on Page 69**

(Sudoku puzzles are provided by [www.sudokuoftheday.com](http://www.sudokuoftheday.com))

# Improve, Don't Move!

**Maximise the value of your home.**

- SPACE-SAVING - MAXIMISE YOUR GARAGE HEADROOM
- SECURITY-ENABLED AUTO-LOCKING SYSTEM
- CHOICE OF 21 COLOURS TO MATCH YOUR HOME
- REMOVAL AND RECYCLING OF YOUR OLD DOOR
- DEDICATED AFTER-CARE TEAM

GAROLLA

01884 720 017

ROLLER SHUTTER DOORS

LINES OPEN 7 DAYS A WEEK

www.garolla.co.uk



4.8 out of 5 / 4,762 reviews



4.8 out of 5



9.8 out of 10



APPROVED

BESPOKE ELECTRIC DOORS MANUFACTURED IN THE UK

FREE FITTING  
PAYMENT ON  
INSTALLATION



PRICED EXAMPLE **£895**  
COMPACT + UP TO 2.4M

GAROLLA \* PREMIUM

Increased Security • Double Insulation  
One-Touch Close



PRICED EXAMPLE **£1,990**  
PREMIUM + 3.4M + ANTHRACITE

# YOUR COMPLETE ELECTRICAL SERVICE



We have more than  
28 years of experience  
in electrical contracting  
throughout Devon.

- » Rewiring
- » New consumer units
- » Minor works
- » New installations
- » Energy saving and LED
- » Fault finding
- » Emergency call outs



*We'll take care of it.*

Call us now for a  
free estimate and advice.  
Winkleigh - 01837 83900

Bedwell Electrical  
The Airfield, Winkleigh  
Devon, EX19 8DW

info@bedwellelectrical.co.uk  
[www.bedwellelectrical.co.uk](http://www.bedwellelectrical.co.uk)



## Puzzle Solutions

|   |   |   |   |   |   |   |   |   |   |   |   |   |   |   |
|---|---|---|---|---|---|---|---|---|---|---|---|---|---|---|
| Y | P | R | I | B | S | A | K | Q | L | E | G | Q | P | M |
| G | R | O | Y | Y | H | T | P | L | B | V | K | U | B | L |
| F | E | C | O | J | L | T | F | P | V | A | Y | M | C | E |
| V | Y | M | C | V | O | N | S | W | E | S | P | I | N | E |
| F | I | N | G | E | R | S | K | X | T | N | C | S | T | X |
| M | N | Q | S | A | N | N | Q | P | W | O | D | T | L | H |
| B | G | D | H | A | E | L | Q | Q | L | V | N | I | D | Y |
| K | O | T | P | E | R | G | J | P | H | B | K | G | X | U |
| M | Y | R | E | A | H | M | K | W | B | L | K | M | U | H |
| C | M | F | A | E | O | J | K | R | K | U | I | G | L | E |
| M | G | X | A | E | U | O | A | C | B | N | D | G | I | Y |
| K | G | R | H | L | L | I | J | X | H | G | N | T | V | F |
| P | T | G | Q | B | N | F | P | J | V | S | E | W | E | X |
| J | T | A | W | O | Y | E | A | P | D | W | Y | S | R | K |
| P | D | T | M | W | L | G | A | Q | D | H | S | S | U | E |

|   |   |   |   |   |   |   |   |   |
|---|---|---|---|---|---|---|---|---|
| 6 | 1 | 7 | 5 | 3 | 2 | 4 | 9 | 8 |
| 3 | 2 | 5 | 8 | 4 | 9 | 1 | 6 | 7 |
| 4 | 8 | 9 | 1 | 6 | 7 | 3 | 2 | 5 |
| 8 | 7 | 1 | 2 | 5 | 4 | 6 | 3 | 9 |
| 9 | 4 | 2 | 6 | 8 | 3 | 7 | 5 | 1 |
| 5 | 6 | 3 | 7 | 9 | 1 | 8 | 4 | 2 |
| 7 | 5 | 6 | 3 | 2 | 8 | 9 | 1 | 4 |
| 2 | 9 | 8 | 4 | 1 | 6 | 5 | 7 | 3 |
| 1 | 3 | 4 | 9 | 7 | 5 | 2 | 8 | 6 |

## FOUR SEASONS BINGO

### WINKLEIGH

EVERY 2<sup>nd</sup> AND 4<sup>th</sup> FRIDAY OF THE MONTH

CONTACT DEREK ON 01837 680071

**EYES DOWN 7.30 PM**

## And Finally .....

Like the autumn edition of Distinctly Winkleigh in 2022, production of this one has been delayed again as I have had to take some time away from my keyboard recently for a long-awaited health procedure to be done at last. Everything went well pending a further check-up, but I now have to take things easy for a while.

As you will have read in the centre pages, the Winkleigh Society still needs to recruit a new Editor to take over as soon as possible, perhaps someone bringing new ideas and a different approach to DW. The role can be interesting and rewarding, although things can be a bit hectic at times! Please do get in touch if you want to find out more or have a no obligation chat about what is involved.

The other major event this year has been the annual Winkleigh Fair which saw very mixed weather once again. However everyone carried on regardless in good spirits despite the rain, as they usually do and a good time was had by all. Of course none of it would have been possible if a willing group of volunteers had not got together to organise everything; they deserve our thanks for all their hard work.

**The deadline for the autumn edition will be noon on Monday 6<sup>th</sup> November.**

Publication and distribution of DW88 is planned for the end of November.

*Please don't wait until the last minute to send us articles!*

*After all 'the early bird usually catches the worm' (and makes life easier!)*

# S.J.CARNE

*Independent Family Owned  
Funeral Directors*

Established over 60 years  
Personal Attention Day and Night



**Samantha Colgrave**  
Summerhayes, Ingleigh Green,  
Winkleigh, Devon, EX19 8AT  
Email: samjcarne@outlook.com  
Tel: 01837 680199

Pre-arranged and Bespoke Funeral Plans  
Available



Acorn is an independent co-educational school which provides learning and supportive environments for students from Key Stage 2-4 with Social, Emotional, Mental Health, Autism Spectrum Conditions and/or Specific Learning Difficulties.



We would like to thank the farming community for donating old tractor tyres for our playground – the children love them!

We are looking to work with local suppliers for our food deliveries, if you think you can help supply our school, please get in touch!

Acorn has had a jam packed couple of weeks, the first ever Careers Fayre was held with local businesses, colleges and the public sector coming from all over Devon to support our pupils with the vast array of career opportunities open to them, allowing them to become immersed in a range of fields, including carpentry, mechanics and veterinary care. Thank you to all those involved.



#### Interesting facts about our wonderful school;

- The school can educate 42 pupils
- Acorn is a therapeutic school which focuses on praise, and therapeutic input to support our young people to develop
- Some of our pupils travel as much as 1 hour each way to gain access to the nurturing environment we provide.
- Pupil wellbeing is at the heart of everything we do at Acorn, with each pupil having their own individualised learning plan based on their own interests.
- Our class sizes are no bigger than 4!



Teaching Assistants £19,174 - £20,070 per annum (£10.70 - £11.20 per hour) | Term Time

To apply, please visit: [phoenixlearningcarecareers.co.uk](https://phoenixlearningcarecareers.co.uk)

Call: 0330 135 8 158 or Email: [recruitment@plcl.org.uk](mailto:recruitment@plcl.org.uk)

## **DISTINCTLY WINKLEIGH - PUBLICATION INFORMATION**

The Winkleigh Society publishes Distinctly Winkleigh quarterly at the end of February, May, August and November. Copies are delivered or posted free of charge to all households and businesses in the Parish.

Please email Articles to [articles@distinctlywinkleigh.co.uk](mailto:articles@distinctlywinkleigh.co.uk) and Adverts to [adverts@distinctlywinkleigh.co.uk](mailto:adverts@distinctlywinkleigh.co.uk) or contact the Editor for the delivery address.

One-off posters for community 'not-for-profit' events are free of charge.

Please ensure that any images you submit are of the highest possible resolution and that all articles and images are copyright-free. All articles submitted for publication may be subject to editing, primarily for space or layout reasons. Note also that it takes only 500 words to fill each (A5) page without any images.

Please be aware that the views expressed in submitted material are not necessarily shared or endorsed by the newsletter team or The Winkleigh Society. Furthermore the Society does not accept any responsibility for the accuracy of any information, goods or services advertised in adverts or articles.

### **ADVERTISING RATES FOR A SINGLE EDITION:**

Quarter-page: £15, Half-page: £30, Full page: £60

(Discounts given for four consecutive editions when paid in advance)

(The number of full page adverts we can accept per edition is limited)

---

EDITOR: Godfrey Rhodes, Winkleigh EX19 8JP - Tel: 01837 682982

PRINTERS: HEDGEROW PRINT, CREDITON, EX17 1ES - Tel: 01363 777595

DISTRIBUTION MANAGER: Barry Jenkins – Tel: 01837 682909

---

### **WINKLEIGH SOCIETY COMMITTEE MEMBERS**

|                       |                    |                |
|-----------------------|--------------------|----------------|
| <i>Chair</i>          | Penny Griffiths    | 01837 83407    |
| <i>Vice Chair</i>     | Margaret Miller    | 01837 83398    |
| <i>Hon. Treasurer</i> | Rachel Goldsworthy | 07876 508228   |
| <i>Hon. Secretary</i> | Philip Griffiths   | 01837 83407    |
|                       | Barbara Jenkins    | Royston Naylor |
|                       | Adam Wonnacott     | Godfrey Rhodes |

All residents of Winkleigh Parish are welcome to attend and vote at Winkleigh Society General Meetings. Further information about the Society can be accessed at: <https://winkleighonline.com>

<https://facebook.com/TWSDW>



Find us on  
**Facebook**