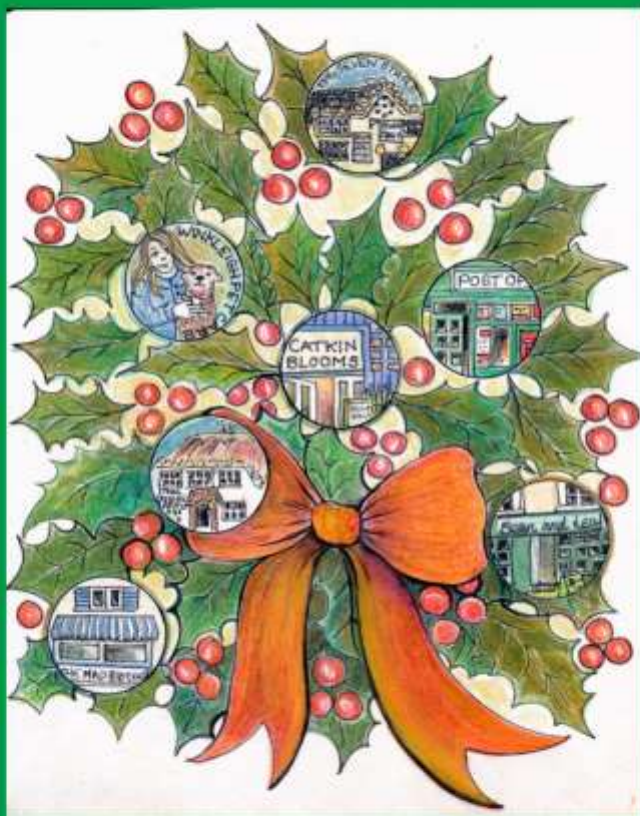


# DISTINCTLY WINKLEIGH



*Working for Winkleigh*



*Image created by local artist Gabriel Lawley-Jones*

**Edition 88**

**Winter 2023**

*Cover sponsored by*

*George Shacklock, MTF Contracting, Winkleigh. 01837 83325*

**The Winkleigh Society Quarterly Journal**

# Heating, Cooking & Living.

- Stoves & Fires • Flues, Chimneys & Stove Installations
- Seasoned Logs • Range Cookers • Spares & Accessories



To see one of the largest selections of stove, fires and range cookers in the South West, many of which are live and on display, visit Rangemoors. Whether you want to add warmth and atmosphere to your living space or cook up a storm in the kitchen, we have the perfect appliance for you and your home.

Telephone 01837 680068  
[www.rangemoors.co.uk](http://www.rangemoors.co.uk)

Rangemoors

## The Winkleigh Society: Chair's Report August 2023



### **Visit to North Devon Heritage**

**Centre:** Thirteen society members met at North Devon Heritage Centre in Barnstaple on Tuesday 19<sup>th</sup> September. Archivist Gary Knaggs and his assistant Tyler put out maps, deeds, charters and other documents about Winkleigh & Hollocombe, they spent two hours with our group answering questions and guiding us through a range of sources. Information was accessed on family trees, land deeds, Shute Lane, the connection between the two castle mounds and the village pump.



**Posties Tea:** The Winkleigh Society annual thank you tea was held for our posties, who deliver *Distinctly Winkleigh* to every household in the Parish, plus the DW proof readers and the WS committee who keep the show on the road. We are a dedicated band and it was great that we could all meet-up. The wonderful weather meant we could spill outside and soak up the sun at Fiona's Kitchen & Farm Shop. Many thanks to Fiona, Linda and Andrew who worked their socks off keeping us topped up with delicious savouries, tea and cake.

**Lives In A Landscape:** We continue to add to this series. The latest Winkleigh resident featured in this edition of DW is **Donald Creber**. The Society intends to compile all the collection of interviews into a book which we will feature at our next AGM.

**Our annual Remembrance Service:** was held at the RAF Memorial on the airfield attended by representatives of many organisations and individuals. Officiated by Reverend Helen Blaine. The congregation gathered at the Memorial. Major Justin Lystiuk of the Royal Canadian Air Force read the Roll Call of flyers who paid the ultimate sacrifice and laid a wreath on behalf of the people of Canada. This year Carl Woodison sounded The Last Post and Reveille. Flags of the Nations that flew from the Airfield were hoisted. There was an excellent attendance to this moving Remembrance service that develops more significance as the years pass.

*Penny Griffiths*



**Local Family Run Residential  
Sales & Lettings Agent**

**Call us for a FREE  
no-obligation Valuation of your Property.**

**01837 83393**

**info@howesestates.co.uk www.howesestates.co.uk**

**Sell your property from 0% and no upfront fees\***

*\*terms and conditions apply*

## **Winkleigh POST OFFICE**

*~ Not just a Post Office! ~*

**Full Banking Service**

**Deposit Cash & Cheques Business or Private  
To Any Bank or Building Society  
Plus Withdrawals of Cash**

**Order & Collect Travel Money  
(Euro & US Dollar always in stock**

**All Other Currencies – 24 hour notice)**

**Pay Car Tax + Payment of all Bills with a Barcode**

**Mobile, Gas & Electricity Card / Key Top-up**

**Wide range of Cards**

**Full Range of Stationery & Seasonal Goods**

**Open 8.30 am-5.00 pm Mon-Fri & 9 am-12.30 pm Sat**

**01837 83427**

**Owner: Tony Bayley**

## Winkleigh Church Flower Ladies



The Harvest Festival flowers displays were amazing and I am pleased to report there were several additional floral donations from individuals within the village, and also from the Winkleigh & District Garden Club.

The scheduled 'Coffee & Cake' morning held on Tuesday 26<sup>th</sup> September went well and with homemade confectionary available raised £133.00 for group funds

Sadly since our harvest event Marcia Butt has decided to retire from the group after many happy years of being involved with the church flowers. She will be sadly missed by the remaining members. If there is anyone reading this piece who would like to join us, you would be made very welcome. Please come forward and make yourself known.

*Contact: Linda Millership on 01837 680040.*

**LOCALLY BARN - REARED AND OVEN - READY  
CHRISTMAS TURKEYS,  
CHICKENS & GEESE**



**MICHAEL WESTERN - MIDDLECOTT FARM  
BROADWOODKELLY Tel: 01837 83381  
LOCAL DELIVERY AVAILABLE**

## Lucy Burgoyne - Graduation

Winkleigh girl, Lucy Burgoyne, has graduated as a nurse from Bolton University.

A pupil at Winkleigh Primary School and Chulmleigh Community College, Lucy then went to Petroc College, where she studied a nursing course run by Bolton University.

It was a practical, hands-on course where she worked with District nursing teams and at North Devon District Hospital.

Like many students Lucy was impacted by the covid-19 lockdowns. Sometimes she studied from home and when out on rounds attending patients she had to wear full covid-19 protection kit.

Overcoming all these difficulties Lucy successfully completed the degree course.

The graduation ceremony in Barnstaple, which was attended by her parents Janet and Kevin, (together with sister April), was a grand affair.

Janet is keen to emphasise how proud they are of Lucy's achievement as all her hard work and dedication during the course has paid off.

The graduates paraded in their gowns and mortar boards along Barnstaple High Street and then attended the awards ceremony in Barnstaple Guild Hall.

Now busy District Nursing Lucy also does regular shifts at North Devon District Hospital across a range of specialities.

Thoroughly enjoying the range and interest of her work in the nursing profession Lucy is considering further training such as midwifery.



*Penny Griffiths*



North Tawton EX20 2DH  
[www.ashridge-court.co.uk](http://www.ashridge-court.co.uk)  
01837 880192

### **Slow-grown, Grass-fed Beef**

Locally raised beef from just £10 per kg

Free local delivery (min 3kgs)

### **Dry Logs & Sawn Timber**

Selection of local hardwoods

Contact Carolyn 07872 598 659

### **Ashridge Great Barn**

Wedding ceremonies & receptions, events,

Parties, training days and celebrations

Contact Cat on 01837 352025

## News from Winkleigh Parish Church



THE WINKLEIGH  
MISSION COMMUNITY

'Tis the season to be jolly' – or so that well-known seasonal saying tells us.

At this time of year everything encourages us to be happy, joyful and have the perfect Christmas. Media and

the shops are full of images of laden dinner-tables and happy smiling families. We are shown wonderful scenes of the family unwrapping amazing and expensive presents on Christmas morning, with everyone, including the dog, in matching pyjamas. A beautiful, colour-co-ordinated tree is in the background, along with a roaring fire. A scene of perfection and jollity.

For some people Christmas may indeed look a bit like this. The excitement, the lights and the sparkles providing welcome relief from the dark days of winter. Some people thrive on the planning, the organising and the shopping. Christmas is indeed a time to be jolly – that is OK.

For others though Christmas is more difficult. Family life may be complicated and worries over relationships may abound. The pressure to be jolly when you are grieving the death of a loved one, feel alone, or are worried about finances, may seem overwhelming. Jolly is the last thing anyone wants to be – that is OK too.

The central message of Christmas – the birth of Jesus, the Son of God into the world, is not about being jolly or having the perfect Christmas. It is not about how we celebrate or what presents we give and receive. It is about God's love for the world which was so great he sent his Son to us. Not born into a great family or a grand palace but to a young couple, sheltering in a stable. When we get to the heart of Christmas, there is space enough for all. You can be jolly and rejoice loudly with the angels, get caught up in the excitement of the shepherds. You can also just sit in the shelter and quiet of the stable and gaze at the babe in the manger.

**Over the Christmas period we have services to suit all feelings and people.**

**If you seek quiet, peace and the calm of Christmas we have Nine lessons and Carols on 17<sup>th</sup> December at 4 pm or Midnight Mass at 11:30 pm on Christmas Eve.**

**For jollity and fun, we have our Crib Service at 5pm on Christmas Eve or our family service at 9:30am on Christmas morning.**

**Church is also open every day for anyone wanting some quiet time alone.**

**May we all know the love and peace of Christ this Christmas**

*Helen*

*The Revd Helen Blaine - 01837 83710 - revhelenblaine@outlook.com*

## Local Press Snippets

**OKEHAMPTON TIMES (31 August and featured on BBC Spotlight):**

**Last Ditch attempt to save mobile libraries.** Michael Morpurgo and Michael Rosen, children's authors, have lent their support to Torridge District Councillor Cheryl Cottle-Hunkin in the campaign to save Devon's mobile libraries. [ED: *but see page 10*]

**NORTH DEVON JOURNAL (28 September):**

**National house-builder Allison Homes hit problems at Witheridge.** North Devon Council demanded Allison Homes stop construction at Willow Heights in Witheridge as outstanding planning conditions had not been met. Allison Homes defied the order and North Devon Council confirmed it did not have the legal powers to enforce the stoppage although negotiations were ongoing.

**OKEHAMPTON TIMES (31 August 31):**

**Drivers urged to slow down to protect horses and their Riders.** Catherine Boyd wants to raise awareness of the **pass wide and slow campaign** after several close encounters on the old A30. Catherine is asking drivers to pass a horse and rider at 10 mph. She explains: "A horse can spook sideways in excess of 20 mph and may be spooking at something the driver cannot see. If a rider signals to slow down please observe this and understand it is for your own safety, it is not out of arrogance."

**NORTH DEVON JOURNAL (5 October):**

**Public send cops record number of bad driving dash-cam clips.** Devon and Cornwall Police received 747 videos from the public through Operation 'Snap' in August. 56% actioned by police: 246 prosecutions and 172 warning advice given.

**CREDITON COURIER (SEPTEMBER 28):**

**77<sup>th</sup> Cheriton Fitzpaine Ploughing annual match.** 55 men, women and children competed.

*Penny Griffiths*

## RAY SQUIRE CONTRACTING

WINKLEIGH

Hay-making, Grass mowing, Turning, Rowing up,  
Small bale baling, Round bale baling (net-wrap),  
Round bale wrapping, Flail Topping, Hedge Trimming ,  
Muck-spreading, Chain Harrowing, Rolling

**Give us a call on – 07912316679**



## Flushed With Success

The public loos in Castle Street have over the years deteriorated, with peeling paint and rotting woodwork, fast becoming an eyesore.

Step forward a public-spirited villager concerned with this decline: she persistently lobbied Torridge District Council reminding them of their responsibility to maintain this vital village asset. As a result of her campaign a much overlooked vital component of village life has been refurbished, painted and upgraded.

At a time when many public toilets have been shut or demolished in Devon it is heartening that Winkleigh is bucking the trend of this false economy.

Well done to the village champion who took the time and trouble to persistently fight for this refurbishment.

It is a wonderful example of what can be achieved by a determined person on a mission for the public good.

*Penny Griffiths*

 <p><b>THE SHIFTERS</b> <b>Spirebourne Limited</b> Liquid Waste Disposal and Drainage Co.</p> <p><b>EMERGENCY CALL OUTS</b></p> <p>Septic Tank/Cess Pool Emptying – Any Size Grease Traps Drain Blockage Clearance Various Commercial Liquid Waste Disposal Servicing CCTV Drainage Surveys Pump Repairs &amp; Renewals Installation of Septic Tanks &amp; Sewage Treatment Works Mantair Units</p> <p><b>FREEPHONE 08000 855 185</b> spirebourne@hotmail.co.uk www.spirebourne.co.uk</p>	<p><b>Need Help In The Garden?</b></p> <p><b>RHS Qualified, Experienced Gardener</b></p> <p>All Aspects of Garden Maintenance Planting Ideas Year Round Reliable Service</p> <p>Call Maxine on 01837 680039 or 07815 309023</p> 
--	---

## Our Devon County Councillor writes .....



It has been another busy period at Devon County Council. Locally, I am pleased to see the long awaited 20 MPH zone around Townsend Hill and the 30 MPH extension to cover Elms Meadow have been implemented. I believe both of these measures should have a positive impact on road safety and, with our active Community Speedwatch Group, should there be cases of speeding in the new limits then I would expect to see the Police carry out some enforcement, which I know they have been doing in both Winkleigh and elsewhere in Torrington Rural on the back of Speedwatch findings.

Since my last article, matters have moved on in the Mobile Library debate. The decision to decommission the service was 'called in' to the Council's Scrutiny Committee and a final decision will be taken in November. As I outlined in my last article, for me this has always been about **how** we deliver a service. If I compare the numbers of people using the Mobile Library on average, per stop, in the Parish of Winkleigh (24.6 people across the three stops), just **1.45%** of the total population of this Parish (1,694 according to 2021 census data) is choosing to access the service when it comes to the Parish.

I hope readers would agree with me that if we are serious about promoting reading and book lending in this community and elsewhere, then running a service where more than 98% of residents are choosing not to access it is neither viable, sustainable, or frankly effective. Incidentally, having crunched the numbers for all of my Parishes that number declines to just **0.58%**.

Therefore, we need to think differently about how we can provide a more effective rural library outreach provision. As I outlined in my last article, the Council has outlined a number of different options from utilising a Home Library Service to deliver books directly to residents, through to improving digital offerings as many people do now choose to read using their Kindles and other electronic devices.

Alongside this, a community-based library outlet offer will also be available with DCC allocating a further £15,000 to the Growing Communities Fund grant to help villages set up a community library. These will be linked to the main Library service with the offer initially to:

- Place reservations online using Devon Libraries website (can be done through the telephone or on a tablet/computer at community library location if not online)
- Pick-up at a local community location
- Provide an extended loan period similar to mobile library card benefits
- 2 or 4 week drop-off \ pick up by volunteers

- Utilise community hall, village hall, town or parish council office and local volunteers.

I believe this offers us in Winkleigh and throughout Torrington Rural an exciting opportunity and something from which our communities, should they choose to take up this option, stand to benefit. As I said in my last article, these community facilities could be used or based in a village hall and combined with an event such as a coffee morning. These could be open for longer, and be far more accessible to people than an occasional 2-4 weekly visit of a mobile van for 30 minutes that, particularly in winter months is likely to be in unpleasant inclement weather.

Currently it costs £200,000 a year to run the Mobile Library Service, and it will cost up to £800,000 to purchase the four new vans to renew the service. I do genuinely believe through going down the community offer, the Home Library Service and Digital Service, we can provide a much more effective service and one that would cost far less than the current service.

I sincerely hope we can get a community library offer up and running here in Winkleigh, and I look forward to working with the Parish and wider community in helping to get one set up.

As ever, if there are any DCC issues you'd like to raise with me you can contact me on Facebook on [facebook.com/cllrsaywell](https://www.facebook.com/cllrsaywell), ring 07886 446560 or email [andrew.saywell@devon.gov.uk](mailto:andrew.saywell@devon.gov.uk)

 <p><b>ROCKET CLOTHING CO.</b></p> <p><b>PRINTED &amp; EMBROIDERED CLOTHING &amp; MERCHANDISE FOR BUSINESS &amp; LEISURE</b></p> <p><b>0800 622 6711</b></p> <p><b>WWW.ROCKETCLOTHING.CO</b> <b>HELLO@ROCKETCLOTHING.CO</b></p> <p><b>BEECHLEA INDUSTRIAL ESTATE WINKLEIGH EX19 8DH</b></p>	 <p><i>Winkleigh's very own independent wool, haberdashery, craft, fabric shop &amp; workshop space</i></p>   <div style="border: 2px solid black; border-radius: 50%; padding: 10px; display: inline-block;"> <p>OPEN Monday to Friday 9am - 4pm Saturday 9am - 12pm Sunday Closed for Crafting!</p> </div> <ul style="list-style-type: none"> <li>• Regular Expert Workshops</li> <li>• Sewcial Sessions Every Tuesday 1-3pm</li> <li>• Sewing Bee Kids Clubs in the holidays</li> <li>• 1-2-1 &amp; Small Group Sewing Lessons</li> <li>• Space Hire for 30+ with Cafe Bar</li> <li>• Friendly help &amp; advice</li> </ul> <p>Brands include James C Brett, Bobbing, Guterman, DMC, Drops, Anchor, Pong, Hemline, Trimits, Milward, &amp; much much more!</p> <p>Find Us... At the front of Beechlea Industrial Estate Winkleigh, EX19 8DH <b>0800 622 6711</b> <a href="http://www.cottonandwool.co.uk">www.cottonandwool.co.uk</a> <a href="mailto:sew@cottonandwool.co.uk">sew@cottonandwool.co.uk</a></p>
---	---

## Report from Winkleigh Parish Council Chair

In September WPC held its first Community Fayre, which was a very successful event and show-cased all the different activities, clubs and classes available for the people of Winkleigh to join. The event was visited by a large number of people who kindly bought raffle tickets raising £100 for Warm Spaces. The long-term plan is to provide an On-line Directory of what's available, with contact details, times and dates. The whole event was joyful and positive and showed what a wonderful inclusive community we are. My thanks to the councillors who worked hard to ensure its success?



The council is implementing the idea of a Talking Bench: the consultation stage has come to an end and the design and budget approved. If the concept of a bench where people can sit and welcome support from members of the community when feeling lonely is successful, then further benches may be

approved. Helplines, QR (quick response) codes and other helpful contact details will be part of the bench.

WPC continues to support the **Winkleigh Volunteer Service** which mainly but not exclusively takes people for medical and other essential appointments. With the expansion of the village, the volunteers have had to face more pressure on the service and we are hoping that as well as more people needing this service the growth of the village community will encourage new people to support this essential provision. Our volunteers give their time for free, but charge 50p per mile. In most cases volunteers will wait whilst you have your appointment to reduce costs.

If you need to use the service, please ring Angela on 837616/07455365144 or email [angela.findlay@w3z.co.uk](mailto:angela.findlay@w3z.co.uk) or my council email: [cllr.angela.findlay@winkleighpc.org](mailto:cllr.angela.findlay@winkleighpc.org).

Volunteers are badly needed so if you think you may be able to help please call me for an informal discussion.

**I would like to thank Sharon Jeens on behalf of WPC for lobbying Torridge District Council hard, in order to get our public toilets refurbished and redecorated. Thank you for your hard work and persistence. Well done!**

WPC has welcomed two new members from our community: Jason Robbins and Josh Rickard. We firmly hope that having offered their services they will be an asset to both the community and the workings of the council. They can be contacted on Jason Robbins, [cllr.jason.robbins@winkleighpc.org](mailto:cllr.jason.robbins@winkleighpc.org) and Josh Rickard, [cllr.josh.rickard@winkleighpc.org](mailto:cllr.josh.rickard@winkleighpc.org).

My apologies to anyone who has tried to contact me throughout September and October. I was very ill with COVID for many weeks and then had to isolate in preparation for an operation. My thanks to Alex Phillips, Vice Chair, who chaired two meetings in my absence. Finally, I am sorry to report that our new clerk Anna has had to leave due to unforeseen, personal reasons. We wish her well both in resolving these and for her future success. We have replaced Anna with Alan Mathewman, who will be contactable on the same email address from November 1<sup>st</sup>.

*Angela Findlay*

*Chair Winkleigh Parish Council - [cllr.angela.findlay@winkleighpc.org](mailto:cllr.angela.findlay@winkleighpc.org)*



**Changes** **Hair Salon**  
**01837 83004**

*Offering all your specialised hairdressing requirements*

**Colouring – Cutting – Perming - Barbering**

**+ + +**

**Opening Tuesday – Friday - 9 am – 5 pm**  
**& the first Saturday of every month by appointment**

**Exeter Road, Winkleigh EX19 8HW**

**- Room to rent above the salon (therapy room, office, etc.) –**

## Winkleigh Village Hall

As I write with just 60 days left to go before Christmas, thoughts are beginning to turn towards the festive period and seasonal events. Your village hall is proving very popular with those wishing to hold both public and private events as we enter the festive season.

**On 2<sup>nd</sup> December, the hall hosts its Christmas market between 10 am and midday. There will be lots of special stalls in addition to those which are regularly featured. Refreshments will include mulled wine and mince pies and there will be some lovely prizes in our raffle. We are pleased to welcome back Peter Howard and his X-tet band which will provide seasonal music live on stage.**

**Aly Leah and Margaret Bridgman will be providing their Winkleigh Warm Space hot lunches on Wednesdays leading up to the Christmas break. These are proving increasingly popular and huge thanks go out to Aly, Margaret and all their helpers.**

Friday December 8<sup>th</sup> sees the screening of a Christmas double bill at the Movies Night. Raymond Briggs "The Snowman", will open the evening followed by the ever-favourite, "ELF". Our New Year programme will start on Friday 12<sup>th</sup> January when "Eddie the Eagle", starring Taron Egerton (You saw him as Elton John in "Rocketman") in the title role, and Hugh Jackman. See our poster for full details.

**BONDLEIGH BARN BAND**  
CHRISTMAS SING-ALONG

**40+ MUSICIANS!**

**WHERE? - Winkleigh Village Hall, Castle Street, Winkleigh**  
**WHEN? - Saturday 9<sup>th</sup> December 12 midday**  
**FREE ENTRY**  
**FREE HOT FOOD PROVIDED BY WINKLEIGH WARM SPACE**  
**PAY BAR AVAILABLE**  
**DONATIONS WELCOME WHICH WILL GO TO DEVON AIR AMBULANCE AND NORTH DEVON HOSPICE**  
*Come along with a smile - SING, LAUGH, EAT & ENJOY!*

**At midday the next day, Saturday 9<sup>th</sup> December, Bondleigh Barn Band will be giving a Christmas Concert in the main hall. This will last until 2 pm with free entry for all and hot food provided, free of charge, by Aly Leah. Donations on the day to two Devon charities, Devon Air Ambulance and North Devon Hospice, will be welcomed.**

Bookings for the hall are healthy, with reservations for parties and weddings becoming more and more popular.

Retaining heat in the main hall has been problematic for many years. However, now that treatment for woodworm has been completed in the roof space, the next stage to combat heat loss will be the installation of modern insulation which will improve heat retention enormously. The woodworm treatment

cost the hall just under £3,000 and is a good example of where funds received from Winkleigh residents through events, together with those given through grants, is being spent.

The hall Annual General meeting took place at the end of October. Committee members, Collin Gibson and Pat Cunnington, both stalwart members of the committee for many years, stood down. Both have, in many ways, provided sterling service and support to the hall, and I thank them for all of the time and effort they have expended during their tenure of office. My thanks also go out to existing, and new, committee members. It is often the case that people only see the front end of events. They don't see the huge amount of work that goes into planning and delivering them: monthly markets, movie nights, quizzes, or a multitude of other events. **We are always looking for additional committee members and anyone who might be available to offer periodic help. Please contact me at the details below if you think you might be one of those people.**

**It only remains for me to thank everyone in the village for your continued support of the hall and its events. Without you lovely people, it is difficult to see how we could endure. I wish all of you, your families, and loved ones, a very Happy Christmas and a peaceful New Year.**

*Tony Aston - Chair*

Committee, Helpers, and Movie Nights – Tony – 07946 490967  
Market Manager and Events – Kay – 01837 83248

# Sueno Beauty

Castle Street, Winkleigh, Devon, EX19 8HU

## Beauty

Waxing, Tinting, OPI Manicures & Pedicures, BIAB (builder gel), Lash Enhancements, LVL Lash Lift, Eve Taylor Facial & Advanced Ultra Sonic Micro- Facial Therapy

## Massage

Swedish, Deep Tissue, Aromatherapy, Hot Stones, Warm Bamboo, Pregnancy

## Holistic

Reflexology, Ear Candling, Thai Foot Massage

Tel: 07590233607

Email:

[suenobeauty@outlook.co](mailto:suenobeauty@outlook.co)

Scan here to take you  
straight to our online  
booking app





# Southwest Fixings Ltd

Agricultural & Building Supplies  
Trade Counter

- Oils and Adblue
  - Fencing Materials
  - Workwear & Boots
  - Calor Gas
  - Animal Health
  - Batteries
  - Animal Feed
  - Nuts & Bolts
  - Hydraulic Hoses
  - Timber
  - Drainage
  - Guttering
  - Plumbing
  - Tools
  - Paint
  - Tractor & Implement Parts
  - Fixings & Fastenings
- ...PLUS MANY MORE!

*Delivery available!*



Tel: 01837 83492

Email: [sales@southwestfixings.co.uk](mailto:sales@southwestfixings.co.uk)

Website: [www.southwestfixings.co.uk](http://www.southwestfixings.co.uk)

Visit: Beechlea Industrial Est. Winkleigh, EX19 8DH

Open: Monday - Friday  
(7:30am - 5pm)  
Saturday (8am - 12noon)

## AIRFIELD General Maintenance & Repair Garage

- MOTs • Vehicle Diagnostics
- Clutches & Cambelts • Brake & Brake Repair
- General Maintenance • Air Conditioning
- Servicing • Bodywork & Restoration



**01837 682 678**  
**[www.airfieldgarage.com](http://www.airfieldgarage.com)**



## Our District Councillor writes ...



Writing this in the week before Remembrance Sunday when we will be remembering those who gave their lives over the countless wars and campaigns that have shaped our history means that, unlike so many around the world, we continue to live in a free country. At a time when we witness through our televisions and social media the daily horrors of the conflict in Israel and Palestine, which draw our attention away from our own war in Europe as Ukrainians continue to fight for

their freedom and survival, it always troubles me that so many seem to lose all sense of perspective as they argue or complain about insignificant trivia. We are, I fear, becoming an increasingly soft and bloated society whose concern is for ourselves rather than for those who are often in far greater need.

**Turning to things at District and Parish level, I have recently been in touch with our MP to add our voice to the numerous complaints he has received about the state of our rural postal service. He, I know, has now raised the issue with ministers and will continue to apply pressure. I see today that he has also instigated a Parliamentary Petition to highlight the appalling state of our roads here in Devon – please make a point of signing it when you get the chance!**

The Parish successfully opposed the recent planning application to develop Great Well Park as it blatantly ignored the requirements of the Torridge Local Plan and the Winkleigh Neighbourhood Plan. I expect the developers will resubmit their application in the future – hopefully this time taking proper note of the needs and wishes of the community articulated through the relevant Local and Neighbourhood Plans. I will continue to make sure that the community's voice is heard when any future plans are discussed by TDC Plans Committee.

**I spoke at the last Parish Council meeting urging them to be more representative of the local community and to work together towards that cause as they have again faced difficulties, at times more centred on the interests of individual councillors than the needs of the Parish. One way to encourage better governance is for more members of the community to attend parish council meetings and make their feelings known – please do try to attend!**

As always, please feel free to contact me for advice on any matters within the Torridge District Council or Winkleigh Parish area of responsibility. As this will be the last Distinctly Winkleigh before Christmas I would like to take this opportunity of wishing you all a safe and happy festive period and thank you for your continuing support.

Cllr Simon Newton MBE - [councillor.newton@torridge.gov.uk](mailto:councillor.newton@torridge.gov.uk) - Tel: 07943 830 220



**SAM'S CIDER**

THE PROPER DEVON CIDER

Celebrating  
100 years  
of cider being  
made on site



Makers of award-winning proper Devon cider

[www.winkleighcider.co.uk](http://www.winkleighcider.co.uk) [info@winkleighcider.co.uk](mailto:info@winkleighcider.co.uk) Follow us on Facebook & Twitter

You can visit us at Winkleigh Cider Company, Western Barn, Hatherleigh Road, Winkleigh, Devon, EX19 8AP  
Onsite gift shop and local produce



**All aspects of pest control  
undertaken for your domestic,  
agricultural and commercial  
requirements throughout Devon.  
BPCA Qualified. Experienced  
Friendly Technicians. Correctly  
Insured.**

**Please call Paul – 07714239656 or  
Ken – 07814306548**

**Email: [paul@greenvalleypestcontrol.co.uk](mailto:paul@greenvalleypestcontrol.co.uk)  
Web: [www.greenvalleypestcontrol.co.uk](http://www.greenvalleypestcontrol.co.uk)**



## Are you a Tree-Hugger?



I came across another meaning for the word ‘tree-hugger’ recently. Not the derogatory term for an environmental protestor, but someone who records the girth of a tree.

Did you know that if you don’t have a tape-measure handy, then ancient trees should be measured in “hugs”, that is, the span of your embrace? I found that it can be quite tricky when you are precariously perched upon a Devon bank! It’s much easier when the tree is growing on a flat bit of land.

So what is the difference between an ancient, a veteran or a notable tree? An **ancient tree** is one that has passed beyond maturity and is old, in comparison with other trees of the same species. Sometimes its

canopy is small. It will probably have a very wide trunk and it is likely that it will be hollow. Here’s a nearby gnarly Ash tree, with huge girth and noticeable hollowing. It has been coppiced, so grows multiple trunks. It’s at the side of a mediaeval carriage-way. Sadly, though it is hundreds of years old, its life expectancy is shortened due to Ash Dieback. If left to decay, it will nevertheless provide many years habitat for insects and birds.



**Local Winkleigh Taxi**  
4,6 & 8 Seater Vehicles Available  
Local or Long Distance, Airports, Stag  
Nights  
Wayne  
**Brad Cars**  
07846389921  
waynejeens@yahoo.co.uk  
Seasons greetings to all our customers  
Competitive Rates



Local  
Reliable  
Safe





Usually, these features are not a sign that the tree is about to die. In fact, even in this ancient stage the tree may stay alive and healthy for many decades and often centuries. The hollowing and shedding of branches may help to prolong its life. The decaying wood of an ancient tree, with rare and specialised fungi, is one of the most important habitats that exist in Europe and therefore it is vital to conserve all our ancient trees. Here is an Oak in Winkleigh, with “antlers” above the canopy and a wide trunk. It is

centuries old. Do you know where it is?

A **veteran tree** is a survivor that has some features (the ‘scars of age’, such as decaying branches) found on an ancient tree, but not necessarily as a consequence of time, but of its life or environment. Ancient veterans are ancient trees, but not all veterans are old enough to be ancient. The last category is **notable trees** and we have many more of these in our Parish. The Beech Avenue near the cemetery is one example. They are mature and magnificent, often taller than ancient trees. They may even be fatter than many veteran trees but do not have any obvious veteran characteristics.

If you would like to know more, the Woodland Trust has informative leaflets:

<https://www.woodlandtrust.org.uk/trees-woods-and-wildlife/british-trees/ancient-trees/>

There’s also a Devon Wildlife Trust video on YouTube:

<https://www.youtube.com/watch?v=iu3Gwp-mQDU>

If you would like to have a go at hugging a tree for yourself, then please record the trees nearby and fill in the online form for Devon Treescapes:

<https://devontreescapes.com/treescapes>

*Kim J Melhuish*

*Winkleigh Biodiversity Group - wildspacestorrige@gmail.com*

**MDM**  
**MID DEVON**  
MOTOR CO.

**Class 4 + 7 Mot Station**  
**Servicing and Repairs**  
**Four Wheel Alignment**

**01837 83334**

[www.middevonmotor.co.uk](http://www.middevonmotor.co.uk)

Winkleigh Fair Presents.....

# Winkleigh Christmas Market

**Saturday December 2nd**

**6pm - 8pm**

**Winkleigh Square**

**Market Stalls**

**Santa's Grotto and his Elves  
(from 6.30pm)**

**Mulled wine, hot chocolate & mince pies**

**BBQ**

**Raffle**

**Christmas Carols with Crediton Town  
Band  
Guaranteed Snow!!!**

**\*\* Lights Switch-On at 6pm \*\***



## **Kinangop Cattery**

4-star licenced small cattery

Very high standards

Individual attention

Winkleigh Devon EX19 8DN

Phone 07748 608 308

[kinangopcattery@gmail.com](mailto:kinangopcattery@gmail.com)

[www.kinangopcattery.co.uk](http://www.kinangopcattery.co.uk)



**Soft Tissue Therapy  
&  
Personal Training  
in Winkleigh**



**Sports Massage - Injury Rehabilitation  
Pain Management - Personal Training  
Fitness Classes**

**www.middevonsportsmassage.co.uk  
07809 025795  
Exeter Road, Winkleigh**

  
**DOLPHIN**  
SOUTH WEST **Stair Lifts**  
LIMITED

A local trusted family firm offering friendly, impartial advice on your stairlift or lift requirements - enabling you to stay in the home you love

**01363**

**776486**

Website: [www.dolphindevon.co.uk](http://www.dolphindevon.co.uk)  
Email: [info@dolphindevon.co.uk](mailto:info@dolphindevon.co.uk)



Lords Meadow Industrial Estate, Crediton, EX17 1EU



## Flying In A WWII Spitfire - Tony Aston

It had long been an ambition of mine to have the privilege of flying in a World War II Supermarine Spitfire, arguably one of the most iconic and cherished fighter aircraft of the conflict.

Some years ago, my wife Kay had purchased a flight for me in a modern light aircraft which was joined by a Spitfire over the white cliffs of Dover. That was an amazing experience in itself so imagine my reaction when I discovered earlier this year that my son, Stuart, had gifted me a 30-minute flight in a genuine Spitfire that had seen active service during the war. It's not often that I am lost for words, but this was one of those times!

And so it was, on a very clear, sunny day in September that I arrived at Compton Abbas airfield in Wiltshire for what was to be the experience of a lifetime. I was shown into a room where, along with three others, I received a full briefing about what to expect before and during the flight, and what to do if things went horribly wrong which, it was explained, was highly unlikely - but possible. I was issued with a flying suit, boots, gloves, helmet - and parachute. My first thought was "well, I might just get a parachute jump out of this deal as well, and for free!". I received detailed instructions as to how to leave the plane in an emergency in the air, when to pull the parachute ripcord, and how to land. I must admit, though, to having a nagging fear when I was told, "don't worry if the 'chute doesn't work, sir. Just bring it back and we'll give you another!" RAF humour at its best!



When the time came to board the craft with the pilot, a former Red Arrows and Battle of Britain Memorial Flight team member, Flight Lieutenant Antony “Parky” Parkinson. I was in safe hands.

Fighter aircraft were definitely not built for comfort, and space was very restricted, but it felt marvellous sitting in the rear cockpit, which was equipped exactly as the main front cockpit. Two-seater Spits were used for training pilots and so trainees had exactly the same controls. These were all explained to me pre-take off.

Then - engine start –the sound of a Rolls Royce Merlin engine is most distinctive and unmistakable – taxi and take off. Before I knew it I was looking down onto the airfield as we headed towards the south coast. What a feeling!



We approached Corfe Castle which we circled. Everyone I could see down below was waving madly at us. I couldn't believe that this was me up above them. Then we headed off towards Bournemouth where the annual air show was taking place. Through my headphones I heard Parky say, “look to your left”. I did and was amazed to be looking down on the Red Arrows who were carrying out their aerobatics. Another unforgettable moment and I remember thinking, I wonder how many other people have had the experience of watching the Red Arrows perform, from above them!

We turned to head back to the airfield and Parky said “Do you fancy flying her?” I didn't need asking twice. He gave me control of the craft and waved his hands in the air to show that he wasn't holding



anything. I was flying a Spitfire! The joystick was so very sensitive, and I only had to touch it gently to move up and down, left and right. I handed control back after about 5 minutes. Then it was time for our own aerobatics. We climbed to 1500 feet before Parky carried out a massive backward loop-the-loop. It was such a weird feeling to see the ground above my head!



Then came the *piece de resistance*. We flew directly over the airfield and Parky carried out the famous victory roll....WOW!

Those 30 minutes had flown by (no pun intended!) and before I knew it we were back on the ground. This had been a unique, extraordinary, once-in-a-lifetime experience that I will never forget.

Tony Aston

---

	<p>NICK BEIGHTON</p> <p><b>Carpentry</b></p> <p>WINKLEIGH</p>	<p>Garden Structures Interior Work Sheds Climbing Frames</p>
<p>Raised Beds Gates and Fencing Decking Landscaping Repairs</p>		
		<p>beightonnick@gmail.com <b>0784245522</b></p>

## A Helping Hand for Nature



We are all now so much more aware of how nature is under threat from many challenges. Even in our own beautiful rural area, the abundance and variety of wildlife is decreasing overall. So the **Winkleigh Community Nature Area** at the Recreation Field now has an extended area of flowering meadow and native hedge-banks which have developed well since Spring. Our next project is to extend the line of the hedgerow with native trees across to the existing boundary hedge,

providing food and shelter for birds, insects and mammals. **We really need some willing volunteers from our community to give an hour or so of their time to help us plant them. We are pleased to say that the Woodland Trust will be giving us 420 young hedgerow trees for our project. The trees are arriving in November, so look out for some dates on local Facebook pages or contact us direct, and we will let you know when we are planning to plant them.** No experience is needed, just enthusiasm and a pair of gloves – and spades or forks, if possible.

For more information, please contact Alan Jacobs on 01837 83895 or [wildspacestorridge@gmail.com](mailto:wildspacestorridge@gmail.com)

## MTF CONTRACTING

A local experienced service for all your needs



- Agricultural Fencing
- Garden Fencing
- Tree Surgery
- Landscaping
- Fully Insured and Qualified
- Free no obligation quotes



T: 01837 83325

M: 0777207 8028

[www.mtfcontracting.co.uk](http://www.mtfcontracting.co.uk)



Moortown Farm, Winkleigh, EX19 8HA

# Plastering

07956-586778

Call Now or visit our website

**FREE ESTIMATES  
& ADVICE,  
FROM SMALL  
TO BIG JOBS!**

Aspects including

- \* Skimming
- \* Boarding
- \* Rendering
- \* Damp Proofing

All work  
guaranteed  
Experienced,  
clean & reliable  
service!

# Building

- Renovations/Refurbs\*
- Extensions\*
- Maintenance\*
- Conversions\*
- & More\*

\*VENETIAN \*WOOD EFFECTS \*LIME \*3D STONE WALL

[www.phoenixcreative.uk](http://www.phoenixcreative.uk)

## LORRAINE – MOBILE FOOT HEALTH PRACTITIONER – DipCFHP

**CALL NOW TO BOOK AN APPOINTMENT  
07841 719690**

**PROFESSIONAL & FRIENDLY SERVICE, OFFERED IN THE  
COMFORT OF YOUR OWN HOME.**

**OVER 10 YEARS EXPERIENCE – ABLE TO TREAT  
LONG/THICK/ FUNGAL NAILS, PAINFUL CORNS, IN-GROWING  
TOE NAILS, CALLUS, VERRUCAS, CRACKED HEELS, GENERAL &  
DIABETIC FOOTCARE**



**Fully qualified and insured**



**Booking essential—please email [admin@winkleigh.devon.sch.uk](mailto:admin@winkleigh.devon.sch.uk)**



**WINKLEIGH**

Nursery

Farmer Frank's Lane, EX19 8JQ

Tel 01837 83354



**Friday 8th December**

**2.00pm-3.30pm**

**Christmas crafts**

**Gift for every child**

**All welcome**

**£3.50 per child**

## Planning Matters

Many of you will have experience of the planning system, perhaps putting in a planning application; objecting to one; making comments on emerging policies and so on. But perhaps some people really would like to understand how it works?

This is the first of a short series of articles with the aim of demystifying it further which will appear in the next few editions of DW. To start with: we'll have an overview of who does what and what planning policies apply to the Parish. In later articles there will be a focus on some of the Neighbourhood Plan policies and the reasoning behind them.

**Who is responsible for what?** Torridge District Council makes decisions on planning applications (the 'Local Planning Authority') and prepares the Local Plan, which sets out the District Council's planning policies (the 'Development Plan').

When it makes decisions Torridge consults lots of agencies and organisations, typically:

- The County Council for its views about the impact on County Council services and responsibilities. Most important of these are roads, road safety, access, public transport and education.
- Environmental agencies, such as South West Water (water supply and sewerage) and the Environment Agency; Environmental Health; Natural England; Devon Wildlife Trust.
- Heritage agencies, such as English Heritage and the County Council (archaeology).
- The Parish Council and neighbouring Parish Councils, if adjacent.
- Individuals and land and property holders that might be affected by the planning application.

The list of who is consulted will vary depending on the type of development, the extent of any impact and whether or not Torridge are legally required to consult the organisation.



### ALL SHINES WINDOW & EXTERIOR CLEANING

- WINDOWS
- GUTTERS, SOFFITS, FASCIAS
- SOLAR PANELS
- HOUSE WASH (SOFT METHOD)
- CONSERVATORIES
- ROOF DE-MOSS
- PATIOS, BRICK, PAVING, DRIVE-WAY



Tel: 01805 938502 - Mob: 07711079577

**What gets taken into account?** National planning policy; the Local Plan and the Winkleigh Neighbourhood Plan are the main reference documents. They all have policies that have to be followed unless there are important reasons to overturn them.

**What about the Parish Council?** The Parish Council does its best to represent the majority views of parishioners while also making use of the Winkleigh Neighbourhood Plan, which is in effect the Parish Council's planning policies. The Neighbourhood Plan was agreed by the community in a referendum in June 2021, and is therefore the most important document for WPC to consult.

The Neighbourhood Plan can be read by googling Torridge District Council's web-site and searching for Winkleigh Neighbourhood Plan.

The policies in the Neighbourhood Plan cover major themes: the environment; conservation; housing; the economy and traffic and movement. Each section has important policies that should be followed when applying for planning permission, from how to approach looking at a site before development, how to conserve and (better still) improve the environment and how a site relates to other parcels of land nearby. Especially important are policies that aim to create a walkable village, with links between neighbourhoods. If you are thinking of making a planning application then the Neighbourhood Plan should be your (or your agent's) starting point.

When the Parish Council comments on planning applications it will be guided by the policies in the Neighbourhood Plan where relevant.



The advertisement for Chulmleigh College is a composite image. It features three photographs of students: two boys in school uniforms looking at a book in a library, a boy playing a flute, and three girls in school uniforms smiling. A central text box contains the following text: "Every day is an open day! Our fully comprehensive school with ambition, offers a traditional education for 11-16 year olds, with results consistently amongst the best in the region. Contact us to book a personal tour." The college's name "Chulmleigh College" is written in large blue letters, with the motto "'Nothing but our best'" below it. At the bottom left, contact information is provided: "t: 01769 580215 w: www.chulmleigh.devon.sch.uk e: admin@chulmleigh.devon.sch.uk". On the right side, there is a blue vertical banner with the text "Compassion Ambition Teamwork" and the college's crest. Social media icons for Facebook and Instagram are also present.

**Every day is an open day!**  
*Our fully comprehensive school with ambition, offers a traditional education for 11-16 year olds, with results consistently amongst the best in the region. Contact us to book a personal tour.*

**Chulmleigh College**  
*'Nothing but our best'*

t: 01769 580215 w: [www.chulmleigh.devon.sch.uk](http://www.chulmleigh.devon.sch.uk) e: [admin@chulmleigh.devon.sch.uk](mailto:admin@chulmleigh.devon.sch.uk)

Compassion  
Ambition  
Teamwork

Facebook Instagram

**What else can be taken into account?** Policies cannot cover all circumstances, and where there is little or no policy guidance, issues that are relevant to planning law are taken into account. Many issues commonly raised in objections cannot be taken into account, for example: who the applicant is / their background; loss of view; loss of property value; fears of damage to property; loss of trade; boundary disputes, covenants or property rights; personal circumstances; the weight of objection.

The District Council has a difficult job – planning is often contentious and the grant of permission may upset objectors; or a refusal will upset applicants. There is often a balance to be struck between policies (that in some cases can conflict), how they are interpreted and other interests. The role of the Council is to weigh the importance of the policies – for example, it may be more important to secure affordable housing on a site than to stick rigidly to a policy restricting the number of properties on a parcel of land.

**In the next edition** we'll look at the Neighbourhood Plan policies most commonly referred to and discuss why they are important.

*Pauline Warner  
Winkleigh Parish Council Planning Group*



## TEN ACRES VINEYARD CAMPING

- ⑩ FREE LOCAL WINE DELIVERIES to Winkleigh and surrounding area on Fridays 4-7pm or collect from us by appointment.
- ⑩ GUIDED VINEYARD TOURS & WINE-TASTING from 1<sup>st</sup> May - 30<sup>th</sup> September every Saturday at 4.30pm. Private group tours also available (min 6 people/the cost of 6 people). Booking essential for all tours.
- ⑩ CAMPSITE & DEVON WINE SHACK open 1<sup>st</sup> May - 30<sup>th</sup> September. For tents/small campervans. Glamping also available. Booking essential.

Order wine/gift vouchers and book glamping/camping on our website. Contact us for vineyard tour booking info and availability.

W : [www.tenacresvineyardcamping.co.uk](http://www.tenacresvineyardcamping.co.uk) E : [tenacrescamping@hotmail.co.uk](mailto:tenacrescamping@hotmail.co.uk)  
T : (01837) 83892

## **EDITOR'S ASSISTANT WANTED**

**A new editor for Distinctly Winkleigh has declared an interest in the role so we are now looking for someone who can assist as compositor (Jig-sawing) for all the articles and adverts that form each edition of the magazine.**

**Help and support can be given.**

**If you are interested in making sure that this wonderful asset for the Parish keeps going, please contact a member of the Committee (see back cover of each edition of Distinctly Winkleigh) or contact Penny Griffiths.**

**EMAIL: [penelopegriffiths@googlemail.com](mailto:penelopegriffiths@googlemail.com)**

**Or PHONE 01837 83407**





## What's On Diary –December 2023 – January 2024

*All dates & details are believed to be correct at the time of going to press. Please send details of your events to [articles@distinctlywinkleigh.co.uk](mailto:articles@distinctlywinkleigh.co.uk). For up to date information (if DW has been notified of any changes) see the online diary at [www.winkleighonline.com](http://www.winkleighonline.com).*

<i>December</i>	
<i>1<sup>st</sup> from 4 pm to 8.30 pm</i>	Christmas Tree Festival (sponsor/decorate a tree, trees for sale, refreshments) Farms for City Children, Nethercott House, Iddesleigh EX19 8BG
<i>2<sup>nd</sup> from 10 am to noon</i>	Village Hall Christmas Market
<i>2<sup>nd</sup> from 6 pm to 8 pm</i>	Winkleigh Fair Christmas Market & Lights Switch-on
<i>8<sup>th</sup> from 6.30 pm</i> <i>First film starts at 7 pm</i>	Movie Night Double Bill: The Snowman and Elf, Village Hall
<i>9<sup>th</sup> from noon to 2 pm</i>	Christmas Concert with the Bondleigh Barn Band. Village Hall
<i>13<sup>th</sup> at 11 am</i>	Chulmleigh Dementia Group – Chulmleigh Library
<i>17<sup>th</sup> at 4 pm</i>	Nine Lessons and Carols in Winkleigh Church
<i>17<sup>th</sup> at 6.30 pm</i>	Festival of Nine Lessons Carols with the Winkleigh Singers - St Michael & All Angels Church, Great Torrington
<i>24<sup>th</sup> at 5 pm</i>	Crib Service in Winkleigh Church
<i>24<sup>th</sup> at 11.30 pm</i>	Midnight Mass in Winkleigh Church
<i>25<sup>th</sup> at 9.30 am</i>	Family Service in Winkleigh Church
<i>January</i>	
<i>7<sup>th</sup></i>	Winkleigh Snooker Club Open Day - Sports Centre
<i>19<sup>th</sup> from 6.30 – 9 pm</i>	Supper and Author Talk: The Bomber & the Weather Vane, Community Centre (see poster)



**Qixx**

Winkleigh

**01837 83229**

## Electrical Contractors

- Rewires, New Builds, Extensions
- Consumer Unit Upgrades
- Showers, Cookers, Heating
- Internal / External Lighting
- Sockets & Telephone points
- CCTV & Networking
- Testing & Inspection (inc PAT Testing)



Where A Warm  
Welcome  
Awaits You



- FOOD & DRINK
- OPEN EVERY DAY FROM 11AM
- DOG FRIENDLY
- DARTS & AUNT SALLY
- SPECIAL EVENTS & LIVE MUSIC
- SKY SPORTS & TNT SPORTS



01837 83344



High St, Winkleigh EX19 8HX



hello@sevenstarswinkleigh.co.uk

## Financial Focus – Bull or Bear?

*Disclaimer: The author is an active, regulated Director and the founder of Moor Independent Financial Advisers Ltd, a local, independent financial planning and investment management firm serving private clients and trustees. This guide is for information purposes and does not constitute financial advice, which should be based on your individual circumstances.*

***The value of investments may go down as well as up and you may get back less than you invest. Past performance is not a reliable indicator of future performance.***

This quarter saw the commencement of open warfare in the Middle East, with Israel striking back after the slaughter imposed upon its citizens by Hamas. However, market reaction to these events has been muted; the focus for global financial market participants continues to be inflation and the dawning of the realisation that inflation and, consequently interest rates, will not reverse as quickly as initially forecast. Thus, the narrative has been that interest rates are likely to remain ‘higher for longer’.

Market reaction to good news this past quarter has varied quite unpredictably. Sometimes, good company results were cheered and the market rose; other days good data simply served to offer an additional opportunity for market participants to engage in further self-flagellation, with markets nose-diving at the thought of interest rates remaining elevated. A correction is defined as a 10% fall from the high and this has been the overriding theme of the quarter. The S&P 500 completed a correction from its 31 July high of 4588 to hit 4117, the FTSE 100 retreated from a high of 8012 in February to hit 7291, having previously corrected to these levels twice already this year. The FTSE All-Share followed the same pattern, from 4377 to a new low for this year of 3933, a drop of 444 points or 10.14%.

A market correction is not an unusual event and, in this instance, appears to broadly reflect general uncertainty about the length of time interest rates will remain at current levels, alongside concern this will start to have an impact upon growth if it



The advertisement banner features the Gilbert Stephens Solicitors logo at the top, which includes a green 'gs' monogram and the text 'gilbertstephens' in a green serif font, with 'SOLICITORS' in a smaller, green sans-serif font below it. Below the logo is a green silhouette of a family (two adults and a dog) walking on a path. The text 'Solicitors' is written in a large, white, sans-serif font, and 'Legal advice for every chapter in life' is written in a smaller, white, sans-serif font below it. At the bottom, the contact information '01363 775 566 / law@gilbertstephens.co.uk' and the website 'gilbertstephens.co.uk' are displayed in white text.

persists. This, in turn, is due to the concern that if interest rates remain elevated, this will increase the cost of regular repayments for those who owe money, especially if they initially borrowed it at lower levels of interest, alongside increasing costs for those looking to raise new money for a purchase or expansion. This includes mortgage holders, existing borrowers and companies looking to raise finance in order to grow, alongside bigger corporates rolling over larger debt burdens into a very different interest rate environment. Naturally, this is exactly what interest rate rises undertaken by central banks are often intended to do – cool the economy and prevent it overheating.

However, interest rates were initially raised into a fairly weak economic outlook in many cases; in the UK a year ago, on 3<sup>rd</sup> November 2022, the BoE was predicting that the worst recession since records began was due to unfold over the forthcoming twenty-four months. Followers of financial news channels have also since been treated to a procession of different experts predicting a recession for the US during 2023. More broadly, there was concern that the series of interest rate hikes initiated to battle inflation would ignite a serious, worldwide recession.

Now, we find ourselves in a very different place. Interest rates are high across much of the developed world, but individual fortunes vary greatly. The US is powering ahead, with US GDP reported in Q3 as having grown at an annualised 4.9%, the highest rate of growth since 2021. In the UK, British business confidence grew in October after a drop in September and company bosses plan to boost their prices and their hiring, according to a recent survey. Nationwide reported in November that UK house prices rose by 0.9% month-on-month in October, confounding predictions of a 0.4% fall. In contrast, the Eurozone is struggling badly, with data on 31<sup>st</sup> October showing gross domestic product contracting slightly quarter-on-quarter and the year-on-year growth rate slowing sharply. Whilst a prolonged period of higher interest rates may act as a dampener on economic growth over the forthcoming year, whether or not that may prove to be a serious problem may also depend upon your starting point.

As an example, if you are currently staring down the barrel of anaemic growth and predictions of a recession, whilst inflation appears unlikely to abate, next year may prove to be very challenging. The above scenario may lead to a stagnant economy



## TAWMIX RECYCLING LTD

Poppy's Field, The Old Airfield, Winkleigh EX19 8DW

[haulage@tawmix.co.uk](mailto:haulage@tawmix.co.uk)

07773 781193

**Kiln-dried Grade A Animal Bedding, 30cu mtrs or 100 cu mtrs.**

**Discounts available for bulk loads.**

struggling amidst an inflationary environment, a condition known as stagflation, which effectively simultaneously knee-caps the Central bank. This is because raising interest rates may assist in lowering inflation but push citizens into serious economic hardship, whilst lowering interest rates may help the economy to recover, but is likely to make the inflation problem even worse.

In contrast, much of the US is now whooping about 'Goldilocks' as its most likely scenario. 'Goldilocks' refers to a soft landing, implying the economy is neither too hot (inflationary), nor too cold (recession). This would imply that they are not currently concerned about stagflation, although the threat of a US recession in 2024 remains a real one. Current sentiment reflects a strong economy and the fact that the interest rate rises to date initiated to battle inflation, may also have served to prevent a substantial overheating of their economy. Looking ahead to 2024, this may offer a very different set of options for their Central bank; the option to raise rates again if required to cool the economy and/or battle inflation, or lower rates if required to stimulate growth over the course of next year.

With an unpredictable year on the horizon, exciting opportunities for the medium and long-term investor are likely to materialise. Indeed, some are already in evidence. With many market participants still apparently in disarray, other professional investors may be forgiven for looking forward to 2024 immensely.

*Jonathan Cotty, Chartered FCSI  
Director of Moor Independent Financial Advisers*



**The PC Geek** *your computer...*  
*not working got a virus*  
*Collecting dust in the corner*  
**call Andy Carnegie**

PC repairs  
Health checks  
Upgrades  
Web Design  
Office/admin services  
New and refurbished computers  
Established 15 Years

£48 first hour  
then  
£12.00 every 30min

  
www.tpcgeek.co.uk

Tel: 07903 566861  
Email: tpcgeek@hotmail.co.uk



HIGH MOOR VIEW

NEWBOLD



HURRY...  
FINAL  
HOMES  
REMAINING!

CONTACT US TODAY

07485 910 988

[highmoorview@allison-homes.com](mailto:highmoorview@allison-homes.com)



ALLISON  
HOMES



FULL VALUE PART EXCHANGE AVAILABLE

## ***Britannia* – back in the water at Exeter**

Readers of *Distinctly Winkleigh* will probably recall that *Britannia* has been undergoing restoration in a big tent behind Airfield Garage in Winkleigh for the last five years. Probably as far as she has ever been from the sea during her 108 year life.

Built in 1914 in Kings Lynn, Norfolk, by a well-known shipwrights, the Norfolk brothers, she is a Gaff Cutter; 58 feet long on the deck, with a 13 foot six inch beam and drawing 8 feet. She has a beautiful hollow bow, making her a very fast vessel with beautiful lines and her singled-framed construction is immensely strong.

*Britannia* worked for many years as a whelker but as the industry declined, she was eventually sold and in the 1930s she had an engine fitted and was used for trawling. In 1968 she ran aground on a spit off Boston, capsized and sank. Her new owner ran out of money and/or enthusiasm and she was put up for sale.

**First Restoration:** In 1973 *Britannia* was purchased by Sam and Vicki Samuels. They lived on board in Lowestoft docks and after the birth of their first son, Vicki returned to work, whilst Sam made *Britannia* seaworthy. Then unfortunately she had to be sold out of necessity in 1996.

**Second Restoration:** After many years of neglect *Britannia* had fallen into disrepair until Sam and Vicki had an opportunity to purchase her once again and brought her to Winkleigh where they have been restoring her, helped by a team of volunteers. After hundreds of hours of volunteer time and with new planking, re-decked, caulked and painted, on 19 September *Britannia* was craned onto a truck and transported 23 miles overland from Winkleigh to Exeter harbour, where she was lifted off the transport lorry. It was a tense moment as all 24 tonnes of her dangled in slings above the hard concrete.



Once lowered into the dock she began to take on water straight away. This was expected as the bone-dry planks, old and new, still needed to take up (swell with water) to allow the hull to become properly watertight. The pump did its job, the ship was lifted

out again and tingles (lead patches) were fixed on the hull to help stop the worst of the influx. When *Britannia* was lowered back into the dock the leaking had been slowed and she was ready to float. Over the next few days, the hull took up beautifully in time for her relaunch celebration.

**Relaunch Celebration Exeter Heritage Harbour Festival 24 August 2023:** *Britannia* was the centre of attention at the festival organised by Exeter Canal and Quay Trust and the Heritage Harbour Group. Cannons were fired by the Trafalgar Gun Company as the *TS Exeter* Sea Scouts warped her along the quay. Mariners Away shanty group stood on the stern, singing rousing traditional songs, with the finale of “Rise up Again Britannia” a shanty written specially in her honour.

It was very special to be part of this day, talking to visitors on the quay, handing out flyers about *Britannia* and encouraging the citizens of Exeter to look after her in the



same way as Winkleigh had taken her to their hearts. Britannia will now be based in Exeter Heritage Harbour for the foreseeable future and work will soon begin on re-rigging, fitting out down below and more. Already they have had local volunteer joiners offering their help and Exeter Brewery supported the launch by creating a special beer, Gangplank. In addition to being delicious, proceeds from the sales were donated to *Britannia Sailing Trust* to support continued restoration. It's good to have neighbours like that!

If you want to continue to support us, we have a website and a crowdfunder page Britannia Sailing Trust ([crowdfunder.co.uk](http://crowdfunder.co.uk) where you can keep updated on our progress and help us in our dream of getting Britannia sailing again and at the same time supporting young people in a maritime heritage career. Abi and Seb have been with us for a while and we want to be able to keep paying them!

*Vicki Samuels (Nov 23)*



# Adam of Eden Tree Care



A friendly, family run company aiming to provide a range of high quality arboricultural services to our customers trees.

Services include:

Tree Removals / Dismantles  
Tree pruning, reductions, thinning, shaping and dead wood removal  
Hedge trimming  
Stump grinding  
Tree planting

All work is insured to £5million, complies with relevant British standards and is carried out by appropriately trained and equipped professional arborists

**CALL NOW** for friendly, professional advice and to arrange a **Free no obligation quote**

TEL: 07398268877

Email: [adamofedentrees@gmail.com](mailto:adamofedentrees@gmail.com)



Check us out on facebook and instagram: @adamofedentrees

## Jackson Plumbing & Heating

Oil Fired Boilers & Ranges  
Serviced, Maintained  
& Repaired.



City  
Guilds

Fully Insured • All Work Guaranteed

**Simon Jackson**

01769 520846

07969 906220

[jackson.plumbing@yahoo.co.uk](mailto:jackson.plumbing@yahoo.co.uk)

## CHOOSE AND CUT CHRISTMAS TREES

### CHULMLEIGH HILL CHRISTMAS TREE FARM

OPEN FRIDAYS, SATURDAYS AND SUNDAYS



Fri 24<sup>th</sup>, Sat 25<sup>th</sup> & Sun 26<sup>th</sup> Nov  
Fri 1<sup>st</sup>, Sat 2<sup>nd</sup> & Sun 3<sup>rd</sup> Dec  
Fri 8<sup>th</sup>, Sat 9<sup>th</sup> & Sun 10<sup>th</sup> Dec  
Fri 15<sup>th</sup>, Sat 16<sup>th</sup>, Sun 17<sup>th</sup> Dec  
**9.30am - 3.30pm**

Find us on the B3096 between  
Chawleigh & Chulmleigh - EX18 7ES

Traditional Norway Spruce • Low Needle Drop Nordman Fir  
Fresh Hand Made Wreaths • Stands

★ [www.johncockramchristmastrees.co.uk](http://www.johncockramchristmastrees.co.uk) ★

Tel: 07724 079733 Email: [johncockram@hotmail.co.uk](mailto:johncockram@hotmail.co.uk)

Member of The British Christmas Tree Growers Association



Find us on  
Facebook



## ACE Archaeology Club News

ACE is going places, well OK, only as far as Dartmoor but now we are beginning a partnership with Dartmoor National Park (DNP) archaeologists. It has been recognised that we give people a good grounding in excavation when they dig with us at Moistown and DNP need volunteers who have experience for working on DNP projects on the moor. The Park is usually constrained by time and money and would like it if people who volunteer for archaeology projects came ready trained as this saves time. ACE needed more diggers for Moistown and so was happy to take on some of the moor's volunteers to give them a different digging experience.

ACE members worked on test-pitting at Lustleigh, looking for flint tools and at Piles Hill stone row looking for dating evidence amongst other things.

Our Moistown dig has been put to bed for another year but we are now doing all the post excavation work. The director has to write up the interim report for this year, which is a major piece of work with lots of technical things to be sorted, drawings to be done, spreadsheets to be filled in. We have spent a couple of days washing finds and still have more to do. We only wash the pottery and glass. Cataloguing and dating come soon but they are just the job for dark winter days.



We did the weekend dig at Coldridge church that was mentioned in our last article.

Our archaeological adviser, and Dartmoor archaeologist, Andy Crabb led the dig.

The picture shows test pitting at Coldridge Church

*(courtesy Andy Crabb)*

We were primarily looking for medieval

stained glass and found over 300 small pieces of glass which are now with experts for identification and conservation. We look forward to hearing what they have to say about it.

*Erica Williamson*

<https://acearchaeologyclub.wordpress.com/> and Facebook

## Lives in a Landscape - Donald Creber



Long-time resident on Southernhay since 1975, Donald Creber is pictured in front of his privet hedge with his son Wayne.

Unlike many others on Southernhay, Donald has retained his hedge, keeping it trimmed regularly, aware that it is a vital highway for hedgehogs, birds and insects.

Winkleigh born and bred, Donald reminisced about the time before Southernhay estate was built when, as a teenager, he used to help bring in the hay harvest on the Southernhay fields. He also recalled when there were half-moon pig sties up where Clifford's Way is now.

Looking out from Donald's garden to the Southernhay oak tree and beyond to Dartmoor you feel very connected to the local landscape.

The local authority houses and bungalows that make up Southernhay with their large front and back gardens are a tribute to the good design and layout typical of post-war Britain. There was a chronic shortage of housing after the war but local authority developers [post-war] allowed space for vegetable gardens to feed the family and front gardens for flowers and hedges to encourage beauty, pride and sound neighbourhood values.

The Greens on Southernhay and Sunny View were all part of a planning strategy that incorporated aesthetics, play, and a link with the natural world. The oak tree was planted by a Torridge District Council tree officer [now an extinct species - the officer not the tree!] sometime in the early eighties along with other trees planted in gardens around the estate.



**HC Joinery**

Bespoke Joinery Services

Harry Colgrave

Joiner

---

All aspects of joinery work undertaken.

Doors, windows, repair to neglected doors and windows, door canopies/porches, panelling and restoration projects.

[hcc2010@hotmail.co.uk](mailto:hcc2010@hotmail.co.uk)

01837 83911/07517110668



Summerhayes, Ingleigh Green,  
Winkleigh, EX19 8AT

Until recently most gardens on Southernhay sported hedges but Donald's hedge now stands out on the top road, as many of his neighbours have erected wooden fences or removed hedges to create hard-standing parking spaces or build extensions.

Donald's hedge is good for nesting birds that eat the berries and provides shelter and food for insects. Spiders weave their webs across it. Bees feed off the nectar-rich flowers along with moths, including the caterpillar of the privet hawkmoth.

Belatedly [after the removal of millions of city, town and village hedges] has come the realisation of increased risk of flooding in built-up areas including villages as the rain water is no longer soaked up by flora and fauna and quickly overwhelms the drains.

There are many reasons why Britain is one of the most nature-depleted countries in the world but loss of gardens and natural hedges is a major contributor. Donald's hedge and Southernhay's oak tree also do a lot of heavy lifting in cleaning the air as trees and hedges are natural carbon sinks for exhaust fumes.

Donald has resisted grubbing up his hedge preferring to keep it regularly trimmed, fully aware of its value as a natural habitat and appreciative of its modest beauty. He chuckled as he recounted how an engineer checking out his heat-pump found a hedgehog family sheltering in his bunker. We can't all be David Attenborough but perhaps we could all try to do our bit like hedgetastic Donald!

*Penny Griffiths.*

**TUE-FRI - 9AM - 5PM**  
**SAT - 9AM - 4PM**  
**SUN - 10AM - 3PM**  
**CLOSED MON**

**THE OLD AIRFIELD**  
**WINKLEIGH**  
**EX19 8EZ**  
**NEXT TO JONESY'S CAFE**

**PET, HOME & GARDEN SUPPLIES**

**YOUR ONE-STOP ESSENTIAL SHOP!**

● WILD BIRD FOOD ● PEANUTS ● FAT BALLS ● TREATS  
● PET FOODS ● LITTERS & BEDDING

● TOILETRIES ● BIN LINERS ● CLEANING PRODUCTS ● STATIONERY  
● COOKWARE ● DIY PRODUCTS ● PAINTS & BRUSHES ● GREETINGS CARDS

● COMPOST ● BARK CHIPS ● FENCE & WOOD CARE ● PLANTERS  
● SEEDS ● PLANT FOOD ● TOP SOIL ● PEST CONTROL ● SMOKELESS FUEL

**NOW STOCKING...**  
● HERBS ● SPICES ● DRIED FRUIT ● PULSES ● FLOUR ● OATS  
...AND SO MUCH MORE!!!

**POP IN AND SEE US - WE'D LOVE TO SEE YOU!**

**TEL: 01837 680084**

## Local Choir Prepares to Celebrate Fortieth Anniversary



The Winkleigh Singers  
Registered Charity  
Number  
237221

**Chamber choir, the Winkleigh Singers, is raising funds to commission a new choral piece to mark 40 years of bringing live music to north and mid-Devon.**

2024 marks the 40<sup>th</sup> anniversary of the formation of the **Winkleigh Singers** when Roland Smith first put up a card in Winkleigh village post office suggesting the formation of a choir to sing madrigals and other works for fun. Since then, the choir has gone from strength to strength under Roland's leadership and musical direction.

To celebrate this significant occasion, the choir hopes to commission a new work to be first performed at one of their events during 2024. They have chosen the composer Alison Willis who has put forward an exciting proposal to set some of the Landkey Carols to new music. The Carols are traditional Christmas songs from the North Devon village of Landkey, near Barnstaple and so present a unique connection to the area in which the choir performs.

Roland Smith, Musical Director of the Winkleigh Singers said today, "In her initial expression of interest, Alison proposed a Christmas piece of between eight and ten minutes duration based on the Landkey Carols. We hope that working with Alison, we can create a piece with several contrasting sections which, whilst commissioned and premiered by the Winkleigh Singers as part of the 40th Anniversary, could have a lasting legacy of performances by many other choirs in the future."

Tim Allen, Chair of Trustees of the Winkleigh Singers, said that the choir was now looking for grants and donations from the public to raise funds to commission the new piece. He said, "The choir was shortlisted for the Making Music Adopt a Creator project and we hoped that this would provide the resources for the anniversary piece but unfortunately we did not make the final group selected for the award. We have decided therefore to try to raise sufficient funds to commission a substantial piece of new music from Alison. We already have a pledge of £5,000 from a supporter of the choir but are now looking for matching funding with the aim of reaching at least £10,000. We hope that anyone interested in live choral music will be able to donate to our GoFundMe page at <https://gofund.me/cb709446>.

## i Clean Devon Window Cleaning

WINDOW CLEANING, GUTTER CLEARANCE & CLEANING, FACIAS, SOFFITS & CONSERVATORIES.

Call Paul @ 07514 – 740712 for a no obligation quote.

Email [paul@icleandevon.co.uk](mailto:paul@icleandevon.co.uk)



[WWW.FACEBOOK.CO/ICLEANDEVON.CO.UK](https://www.facebook.co/icleandevon.co.uk)

Covering Winkleigh/ Chumleigh/ Dalton/ Roborough/ Hatherleigh & surrounding villages.

## Winkleigh Warm Space – Halloween Party



What a wonderful party: to all you mums & dads who dressed up and nannys that came and brought lots and lots of little ones all dressed up contributed to make this party a stonking great success, I salute you!!!



**Thank you to Andrew Hawkey for the loan of straw bales, to Alex & Stef who did not say “he delivers” and just as always say yes for collecting and returning the bales. To the Mad Butcher for again providing 9” GF sausages. To Abstract Dragon Disco for providing lots of fun for the little ones to swing their pants. To Beth Williams and Peter Penny for helping to**

**decorate the hall. The young man with the leaf blower!! You made it much easier in the morning thank you!! For the loan of ‘Lurch’ who was great in reception thank you!!!**

Winkleigh Warm Space wants to say thank you to all that come to roasts on Wednesdays because thanks to you we can provide these parties free of charge. So see you Wednesday

*Aly Leah*

**SERVICES FOR SMALLHOLDINGS**  
Fencing • Hedgerow Services • Woodland Management

A range of services to improve, enhance and restore your green areas

**SORREL**  
Countryside Management Services  
Working with Nature

Contact: Philip Cribb  
BSc (Hons) PGCE  
**07815 133576**  
phil@sorrelcms.co.uk

www.sorrelcms.co.uk • @SorrelCMS



# THE BOMBER AND THE WEATHERVANE



## TONY ASTON SUPPER & AUTHOR TALK

**A compelling true story of wartime bravery,  
unbridled passion and eternal remembrance**

**Friday 19<sup>th</sup> January**

**6.30pm - 9pm**

**Winkleigh  
Community Centre**

**Free Entry & Free  
Hot Drinks**

**IN PARTNERSHIP WITH  
WINKLEIGH WARM SPACE.  
HOT-POT PIES AVAILABLE:**

**CHICKEN & LEEK £4  
STEAK & ONION £4  
LEEK & POTATO £3**

**PRE-ORDER FROM ALY**

**LEAH ON**

**07512 766482**

## Guide Dogs for the Blind and Winkleigh History

At the latest, well attended Village Hall monthly Market (Sat 4<sup>th</sup> November) it was really lovely to have the refreshments and cakes in the small room supplied by Liz Jones of Ingleigh Green and her daughters Sophie and Hannah, with proceeds going to Guide Dogs for the Blind. Thank you girls for your hard work and for supporting this worthwhile cause.

Coincidentally on the Winkleigh Society table in the main hall was a display of framed pictures which had been presented over the years by Guide Dogs for the Blind to the Winkleigh Hotel (which was in the Square up towards the Mad Butchers) and to the people of Winkleigh for various activities which had been undertaken to raise funds for the charity.

An impromptu spot discussion taken at the July Market suggested that a majority of people would like these pictures on display in the village as part of Winkleigh History. Jeanette and Peter Churchman originally held these pictures when the Winkleigh Hotel underwent change of use to residential.

They have supplied historical information concerning quizzes and other activities they held there in the late 1980s and 1990s. Jeanette compiled the questions and Peter called them out, and there were regularly 16 teams of 4. Thousands of pounds were raised. (Nanny) Margaret Bridgman remembers these teams and has also mentioned that one of the activities to raise money was abseiling down the church tower!

More on this in the next Edition of DW. Please send in your memories and photos if you have any, if you participated, or were involved, as well as your opinions on where you would like to see the pictures displayed.

The information above was kindly supplied by Peter Churchman and Margaret Bridgman.

*Rachel Goldsworthy*

*PS. To whet your appetite some of the pictures are shown on the following pages*



**WINKLEIGH  
PET CARE**

Dog walking  
Home visits  
House sitting  
Groom/Yard work  
*Fully insured and DBS checked*

**Laura Sherring-Lucas**  
winkleighpetcare@hotmail.com - 07595249418 - @winkleighpetcare



# Guide Dog Pictures - 1



## Quizzes buy two Guide Dogs

The British Council, in its characteristic generosity, has bought two guide dogs for the blind people of the British Empire. The dogs, which are being trained at the Guide Dog School, will be presented to the blind people of the British Empire by the British Council.

## \*\*\*\*\*

The dog is a beautiful, black, medium size, with a white patch on its chest. It is a very intelligent and obedient dog, and is being trained at the Guide Dog School. It will be presented to the blind people of the British Empire by the British Council.

GUIDE DOG PUPPY DUFFY



PRESENTED TO  
CUSTOMERS AND STAFF OF THE WINDLEIGH HOTEL  
IN GRATITUDE FROM  
THE GUIDE DOGS FOR THE BLIND ASSOCIATION

GUIDE DOG WINDLEIGH



PRESENTED TO  
THE CUSTOMERS OF THE WINDLEIGH HOTEL  
IN GRATITUDE FROM  
THE GUIDE DOGS FOR THE BLIND ASSOCIATION

GUIDE DOG PUPPY STAN



PRESENTED TO  
CUSTOMERS AND STAFF OF THE WINDLEIGH HOTEL  
FOR THEIR GENEROUS DONATION TOWARDS THE PUPPY WALKING OF WINDLEIGH  
IN GRATITUDE FROM  
THE GUIDE DOGS FOR THE BLIND ASSOCIATION

## Guide Dog Pictures - 2



GUIDE DOG MARY  
PRESENTED TO  
THE STAFF AND CUSTOMERS OF THE WINDLEIGH HOTEL  
IN GRATITUDE FROM  
THE GUIDE DOGS FOR THE BLIND ASSOCIATION



GUIDE DOG PUPPY JIMMY  
PRESENTED TO  
CUSTOMERS AND STAFF AT THE WINDLEIGH HOTEL AND VILLAGERS  
IN GRATITUDE FROM  
THE GUIDE DOGS FOR THE BLIND ASSOCIATION



GUIDE DOG PUPPY LISA  
PRESENTED TO  
CUSTOMERS AND STAFF AT THE WINDLEIGH HOTEL AND VILLAGERS  
IN GRATITUDE FROM  
THE GUIDE DOGS FOR THE BLIND ASSOCIATION



GUIDE DOG PUPPY MIKE  
PRESENTED TO  
CUSTOMERS AND STAFF OF THE WINDLEIGH HOTEL  
FOR THEIR GENEROUS DONATION TOWARDS THE PUPPY RAISING OF MICHAEL  
IN GRATITUDE FROM  
THE GUIDE DOGS FOR THE BLIND ASSOCIATION

## New 30 mph Sign at Elms Meadow – At Last

Over the last 13 years many residents in Elms Meadow have complained that, despite the streetlamps indicating the entrance to the estate, it has up until now, been opening directly onto a 60 mph highway. Many of us also attended the Hamilton Baillie report meeting in 2018 which highlighted this dangerous access.

Thanks to a lot of nagging by residents supported by County Councillor Andrew Saywell the correct 30 mph signs are finally in place on the A3124.

Coming out of Elms Meadow and turning left has always been hazardous as accelerating vehicles come around the corner and overtake slow-moving traffic, without realising there is a turning there! Also, vehicles turning right into Elms Meadow from the junction have even been overtaken, despite indicating right, as some drivers coming round the corner have not slowed up and just swung out around a stationary or in some cases, an already turning vehicle, again seeing a wide open road and simply not realising there's an estate entrance and exit road there.

I would have liked to see some cautionary notices and a corresponding 30 mph sign on both sides of the road, the same as there is at the nearby junction and ideally a double white line along the 30 mph zone to emphasise that there is a residential vehicular access road (which is the only one for Elms Meadow).

I hope that Devon & Cornwall Community Speedwatch may be able to include assessing and monitoring this new speed limit as my current experience when taking the photo of the sign was that it made little or no difference to the speed that many vehicles were travelling along the highway.

*Rachel Goldsworthy*





**MINI-MARKET & COFFEE MORNING**

**EVERY WEDNESDAY between 9.30 & 10.30**

**IN THE COMMUNITY CENTRE**

**ENJOY A CHAT OVER A CUP OF COFFEE, TEA or HOT  
CHOCOLATE and a biscuit (or two)**

**All Donations will go to Local Charities**

*(after deduction of running costs)*

**Everyone is welcome to come along**



Tom Wilkins



07792419427



[wilkinstom18@gmail.com](mailto:wilkinstom18@gmail.com)



Now find **TW Electrical** on Facebook  
[@tomwilkinselectrical](https://www.facebook.com/tomwilkinselectrical)



- ⊗ Fully Qualified and Insured Local Electrician
- ⊗ Re-wires, kitchens, bathrooms, property extensions and new builds, outside lights, testing, consumer unit upgrades and other domestic and commercial work undertaken

Please get in touch for a free quote!





# The Old Parsonage

B&B and holiday lets



## Contact Carol Jones

 [www.theoldparsonagewinkleigh.co.uk](http://www.theoldparsonagewinkleigh.co.uk)

 [parsonagewinkleigh@hotmail.com](mailto:parsonagewinkleigh@hotmail.com)

 07896 740903

**COVERING ALL EXCAVATIONS AND GROUNDWORKS  
BOTH LARGE AND SMALL PROJECTS AT COMPETITIVE PRICES**



**FULLY INSURED  
HEDGE-TRIMMING FLAIL &  
CIRCULAR SAW  
FIREWOOD PROCESSING.**

**CALL MARTIN ON 07817 46420  
[WWW.MPCONTRACTORS.CO.UK](http://WWW.MPCONTRACTORS.CO.UK)  
FACEBOOK: MARTIN PARISH  
CONTRACTING**

## Townsend Hill Oak Tree



*"This is me, I'm a shadow of my former self, quite skinny really from what I was. Also I'm in prison".*

*Photo and words by Jackie Bridgman*

**Winkleigh Snooker Club  
Open Day on Sunday 7<sup>th</sup>**

**January 2024**

**At the Sports Centre**

**Phone - 07909 538 212**

**Email**

**[winkleighsnookerclub@gmail.com](mailto:winkleighsnookerclub@gmail.com)**



**Open Book** Construction & Developments Ltd

**General Building Works  
Period & Listed Building Renovations  
Maintenance & Repairs**

**For a free, no obligation estimate, please call:**

**01837 83890 • 07541 002017**

**[info@obcd.co.uk](mailto:info@obcd.co.uk)**

**[www.obcd.co.uk](http://www.obcd.co.uk)**

## Winkleigh Sport's Centre Equestrian Sale

Well ladies & gentlemen, what a morning!

The sun shone and it was unseasonably warm for October. A beautiful day for 'All Things Horse'. An amazing thirty-seven sellers, some in the main hall and the rest out on the grass in a marquee (yes, Western Event Hire AKA Stef & Alex, again came to the rescue). More buyers than you could shake a stick at!!

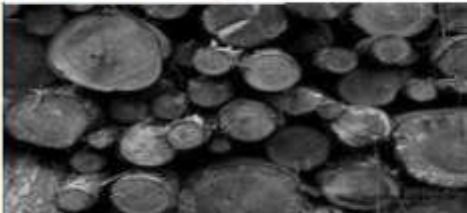


People leaving literally with arms full of goodies! Lots of bacon baps and cuppas. Lots of well behaved kids, and several helpers (thank you Erin & friend).

A Big thank you to Gemma from Cotton & Wool for helping to recruit sellers and advertise to sellers across North Devon. We will be back next year for 'All Things Horse'! See you soon,

*Aly Leah*

### Local Logs



Dry seasoned hardwood  
All stored under cover & delivered in  
Chulmleigh & surrounding area.

Truck Load £110  
Double Load £200  
Trailer Load £320  
Kindling £5 per net

Martin 07817 464420 [parish@btinternet.com](mailto:parish@btinternet.com)  
[www.mpccontracts.co.uk](http://www.mpccontracts.co.uk)

## WINKLEIGH AERIALS

0800 0930 625 Mob 07970 963450

UPGRADED AERIALS  
FILTERS TO REMOVE INTERFERENCE



City & Guilds Qualified



AXA Insured

Trade member for over 40 Years  
Discount applied for Pensioners. Free surveys

Wifi - Cctv - Camera to your TV - Freesat - Dab/FM

Also: 2nd or 3rd Aerial points installed. New TV's supplied & set up

## Letter to the Editor & Jennie Gill (Carrot in DW87)



We loved your Carrot Picture, it gave us quite a chuckle  
Altho' it was a veg first class, it was quite near the knuckle!  
But love it we did and have often hoped to find  
But when all is said and all is done, it's really all in the mind.

*Hazel Beckingham*

## My Macmillan Coffee Morning

The day dawned bright and sunny for my Coffee Morning on Friday 29<sup>th</sup> September at Lane End Cross in aid of Macmillan. Laughter was the medicine of the day: starting when Anita, Jane and Jackie all arrived to help with Tea, Coffee, Lucky Dip, etc. As a Bonus, just as the first guests arrived there was a small Fly-Past by the RAF which was a real surprise and got the morning off to a "Flying Start"!!!

Over 25 ladies arrived with my lovely friend Bill (the only man), who helped with the raffle which was full of wonderful gifts donated by everyone. My lovely dog Mori was, as always, very very well behaved and was so quiet no one knew he was there – 'well done' Mori.

Thanks must go to all my lovely helpers as well as the ladies who helped to chauffeur other guests and friends. With three rooms full of chattering ladies and much laughter and jollity, everyone certainly enjoyed themselves. My neighbour had made a huge delicious Victoria Sponge which, along with many other home-made cakes, biscuits and goodies, went down a treat.

We were all so sorry to hear that Betty Boundy who had helped so generously with my Coffee Morning last year with the Cream & Jam on the Scones had died and we would all like to send our condolences to her family – she was such a lovely lady.

The morning raised £425.00 for Macmillan which included a generous donation from Ashley Game Farm - for which many thanks.

Thanks to all for such a successful morning and here's to next year's Cuppa!!

Brenda Churcher, Lane End Cross (submitted by Jennie Gill)



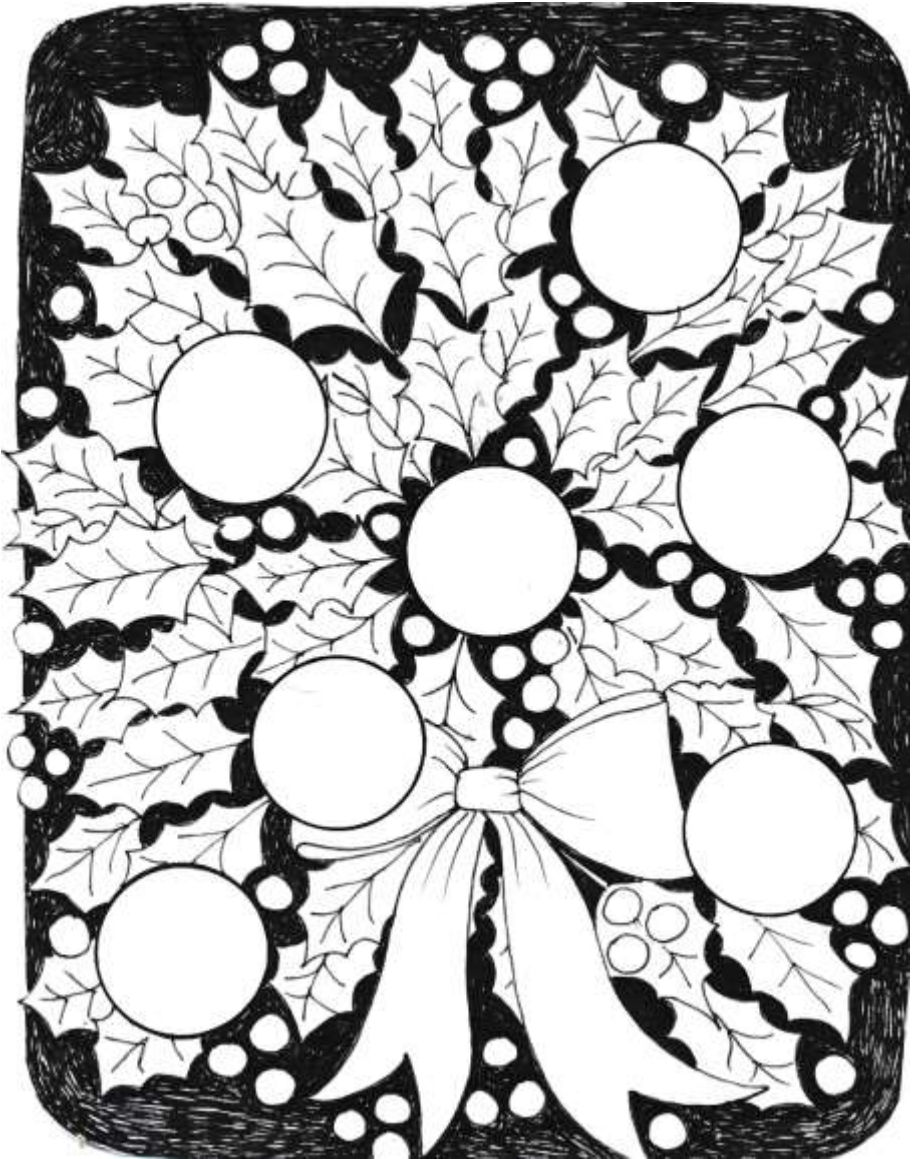
**Quality hardwood logs  
cut to order and kindling.  
All aspects of low impact  
forestry.**

**Call Josh on 01363 83908  
or 07792 906258**



## COLOUR THE CHRISTMAS WREATH

- fill in the baubles with your own Winkleigh ideas



*Picture created for Christmas by Gabriel Lawley-Jones*

## Word Search

T	B	A	H	Z	J	R	E	I	N	D	E	E	R	Q
Y	L	I	G	H	T	S	C	Q	B	Y	E	Y	B	A
M	A	N	V	D	F	A	S	L	S	L	C	L	S	P
W	Q	D	W	R	N	R	T	H	V	F	H	L	E	E
A	Z	W	V	D	Q	B	C	E	G	Q	E	O	I	O
B	L	O	L	E	M	D	S	S	G	M	S	H	R	T
Z	A	E	G	N	N	T	N	N	L	T	T	X	R	E
W	S	U	C	D	E	T	K	L	H	S	N	W	E	L
Q	L	B	B	A	T	Y	F	J	K	K	U	O	B	T
N	U	E	Z	L	R	R	O	P	A	N	T	O	X	S
Q	D	X	K	D	E	O	E	A	T	C	S	R	O	I
G	Y	U	Y	Y	W	S	L	E	F	E	A	V	Q	M
M	H	E	O	T	X	D	I	S	Z	A	R	R	O	Y
H	G	O	G	N	X	P	V	W	T	N	R	G	D	P
C	R	A	C	K	E	R	S	M	M	R	I	P	J	S

ADVENT	CAROLS	LIGHTS
BAUBLES	CHESTNUTS	MISTLETOE
BERRIES	CRACKERS	PANTO
CANDLES	ELVES	REINDEER
CARDS	HOLLY	TREE

***Solution on page 61***



Coffee, Cake, Seasonal Flowers, Plants & Eco Gifts

All under one roof @ Bissett's Garage on Exeter Road Winkleigh EX19 8HW

☎ 07870166985 📧 [enquiries@catkinblooms.co.uk](mailto:enquiries@catkinblooms.co.uk) @CatkinBlooms

Pop in & say hello, we are open Tuesdays to Saturdays 9.30am-5pm

We have a Friday Flower Club, seasonal workshops and events, pop in to ask for details

## Sudoku Puzzle

9		6			1		4	
7		1	2	9			6	
4		2	8		6	3		
				2		9	8	
6								2
	9	4		8				
		3	7		8	4		9
	4			1	3	7		6
	6		9			1		8

**Solution on page 61**

(Sudoku puzzles are provided by [www.sudokuoftheday.com](http://www.sudokuoftheday.com))

# Improve, Don't Move!

**Maximise the value of your home.**

- SPACE-SAVING - MAXIMISE YOUR GARAGE HEADROOM
- SECURITY-ENABLED AUTO-LOCKING SYSTEM
- CHOICE OF 21 COLOURS TO MATCH YOUR HOME
- REMOVAL AND RECYCLING OF YOUR OLD DOOR
- DEDICATED AFTER-CARE TEAM

GAROLLA

01884 720 017

ROLLER SHUTTER DOORS

LINES OPEN 7 DAYS A WEEK

www.garolla.co.uk

  
4.8 out of 5 / 4,762 reviews

  
4.8 out of 5

  
Whose reputation matters  
9.8 out of 10

  
APPROVED

BESPOKE ELECTRIC DOORS MANUFACTURED IN THE UK



FREE  
FITTING

PAYMENT ON  
INSTALLATION

PRICED  
EXAMPLE

£895

COMPACT + UP TO 2.4M

GAROLLA \* PREMIUM

Increased Security • Double Insulation  
One-Touch Close

PRICED  
EXAMPLE

£1,990

PREMIUM + 3.4M + ANTHRACITE

# YOUR COMPLETE ELECTRICAL SERVICE



We have more than  
28 years of experience  
in electrical contracting  
throughout Devon.

- » Rewiring
- » New consumer units
- » Minor works
- » New installations
- » Energy saving and LED
- » Fault finding
- » Emergency call outs



*We'll take care of it.*

Call us now for a  
free estimate and advice.  
Winkleigh - 01837 83900

Bedwell Electrical  
The Airfield, Winkleigh  
Devon, EX19 8DW

info@bedwellelectrical.co.uk  
[www.bedwellelectrical.co.uk](http://www.bedwellelectrical.co.uk)

## Puzzle Solutions

T	B	A	H	Z	J	R	E	I	N	D	E	E	R	Q
Y	L	I	G	H	T	S	C	Q	B	Y	E	Y	B	A
M	A	N	V	D	F	A	S	L	S	L	C	L	S	P
W	Q	D	W	R	N	R	T	H	V	F	H	L	E	E
A	Z	W	V	D	Q	B	C	E	G	Q	E	O	I	O
B	L	O	L	E	M	D	S	S	G	M	S	H	R	T
Z	A	E	G	N	N	T	N	N	L	T	T	X	R	E
W	S	J	C	D	E	T	K	L	H	S	N	W	E	L
Q	L	B	B	A	T	Y	F	J	K	K	U	O	B	T
N	U	E	Z	L	R	R	O	P	A	N	T	O	X	S
Q	D	X	K	D	E	O	E	A	T	C	S	R	O	I
G	Y	U	Y	Y	W	S	L	E	F	E	A	V	Q	M
M	H	E	O	T	X	D	I	S	Z	A	R	R	O	Y
H	G	O	G	N	X	P	V	W	T	N	R	G	D	P
C	R	A	C	K	E	R	S	M	M	R	I	P	J	S

9	8	6	3	5	1	2	4	7
7	3	1	2	9	4	8	6	5
4	5	2	8	7	6	3	9	1
3	1	5	6	2	7	9	8	4
6	7	8	4	3	9	5	1	2
2	9	4	1	8	5	6	7	3
1	2	3	7	6	8	4	5	9
8	4	9	5	1	3	7	2	6
5	6	7	9	4	2	1	3	8

## FOUR SEASONS BINGO

### WINKLEIGH

EVERY 2<sup>nd</sup> AND 4<sup>th</sup> FRIDAY OF THE MONTH

CONTACT DEREK ON 01837 680071

**EYES DOWN 7.30 PM**

## And Finally .....

This year has seen the content of each edition appearing in full colour, mainly thanks to the support of our advertisers without whom we would not be able to continue. However as well as featuring adverts, we also look forward to receiving a steady stream of articles on a wide variety of subjects for which we thank you.

Our regular table at the monthly market has continued to provide a useful means of feedback on the content of each edition of Distinctly Winkleigh. So please let us know what you like or don't like when you visit the market.

As the end of the year approaches, a new editorial team looks to be in the process of forming up to take over from me and produce future editions of Distinctly Winkleigh; no doubt introducing some changes along the way. I hope they are successful and wish them well. I have found my eight year tenure as Editor to be a very interesting and rewarding experience but feel the time is now right for a change.

The deadline for the spring edition will provisionally be noon on Monday 2<sup>nd</sup> February.

*Please don't wait until the last minute to send us your articles!*

*After all 'the early bird usually catches the worm' (and makes life easier!)*

**We wish you a very Merry Christmas and Happy New Year and thank you for your continuing support and encouragement.**

# S.J.CARNE

*Independent Family Owned  
Funeral Directors*

Established over 60 years  
Personal Attention Day and Night



**Samantha Colgrave**  
Summerhayes, Ingleigh Green,  
Winkleigh, Devon, EX19 8AT  
Email: samjcarne@outlook.com  
Tel: 01837 680199

Pre-arranged and Bespoke Funeral Plans  
Available



Acorn is an independent co-educational school which provides learning and supportive environments for students from Key Stage 2-4 with Social, Emotional, Mental Health, Autism Spectrum Conditions and/or Specific Learning Difficulties.



We would like to thank the farming community for donating old tractor tyres for our playground – the children love them!

We are looking to work with local suppliers for our food deliveries, if you think you can help supply our school, please get in touch!

Acorn has had a jam packed couple of weeks, the first ever Careers Fayre was held with local businesses, colleges and the public sector coming from all over Devon to support our pupils with the vast array of career opportunities open to them, allowing them to become immersed in a range of fields, including carpentry, mechanics and veterinary care. Thank you to all those involved.



#### Interesting facts about our wonderful school:

- The school can educate 42 pupils
- Acorn is a therapeutic school which focuses on praise, and therapeutic input to support our young people to develop
- Some of our pupils travel as much as 1 hour each way to gain access to the nurturing environment we provide.
- Pupil wellbeing is at the heart of everything we do at Acorn, with each pupil having their own individualised learning plan based on their own interests.
- Our class sizes are no bigger than 4!



Teaching Assistants £19,174 - £20,070 per annum (£10.70 - £11.20 per hour) | Term Time

To apply, please visit: [phoenixlearningcarecareers.co.uk](https://phoenixlearningcarecareers.co.uk)  
Call: 0330 135 8 158 or Email: [recruitment@plc.org.uk](mailto:recruitment@plc.org.uk)

## ***DISTINCTLY WINKLEIGH - PUBLICATION INFORMATION***

The Winkleigh Society publishes Distinctly Winkleigh quarterly at the end of February, May, August and November. Copies are delivered or posted free of charge to all households and businesses in the Parish.

Please email Articles to [articles@distinctlywinkleigh.co.uk](mailto:articles@distinctlywinkleigh.co.uk) and Adverts to [adverts@distinctlywinkleigh.co.uk](mailto:adverts@distinctlywinkleigh.co.uk) or contact the Editor for the delivery address.

One-off posters for community 'not-for-profit' events are free of charge.

Please ensure that any images you submit are of the highest possible resolution and that all articles and images are copyright-free. All articles submitted for publication may be subject to editing, primarily for space or layout reasons. Note also that it takes only 500 words to fill each (A5) page without any images.

Please be aware that the views expressed in submitted material are not necessarily shared or endorsed by the newsletter team or The Winkleigh Society. Furthermore the Society does not accept any responsibility for the accuracy of any information, goods or services advertised in adverts or articles.

### **ADVERTISING RATES FOR A SINGLE EDITION:**

Quarter-page: £15, Half-page: £30, Full page: £60

(Discounts given for four consecutive editions when paid in advance)

(The number of full page adverts we can accept per edition is limited)

---

EDITOR: Godfrey Rhodes, Winkleigh EX19 8JP - Tel: 01837 682982

PRINTERS: HEDGEROW PRINT, CREDITON, EX17 1ES - Tel: 01363 777595

DISTRIBUTION MANAGER: Barry Jenkins – Tel: 01837 682909

---

### ***WINKLEIGH SOCIETY COMMITTEE MEMBERS***

<i>Chair</i>	Penny Griffiths	01837 83407
<i>Vice Chair</i>	Margaret Miller	01837 83398
<i>Hon. Treasurer</i>	Rachel Goldsworthy	07876 508228
<i>Hon. Secretary</i>	Philip Griffiths	01837 83407
	Barbara Jenkins	Royston Naylor
	Adam Wonnacott	Godfrey Rhodes

All residents of Winkleigh Parish are welcome to attend and vote at Winkleigh Society General Meetings. Further information about the Society can be accessed at: <https://winkleighonline.com>

<https://facebook.com/TWSDW>



Find us on  
**Facebook**