



DISTINCTLY WINKLEIGH

QUARTERLY JOURNAL

The Winkleigh Society

WORKING FOR WINKLEIGH & HOLLOCOMBE

SUMMER 2026





DARTMOOR AUCTIONS

Monthly Auctions - every first Saturday
Doors open 9.00am * Auction starts 9.30am
IN THE ROOM * ONLINE * PHONE



COME AND JOIN US!

- * Preview Day - Friday before - Free Juice & Nut Bar
- * Auction Day - Free Snacks & Refreshments
- * Free Catalogue * Fun Day Out!

SELL YOUR GOODS WITH US!

- * Send photos to WhatsApp 07999 199426
or enquiries@dartmoorauctions.co.uk

Bowden Place, Sticklepath, Devon EX20 2NL
www.dartmoorauctions.co.uk * 01837 849379

Winkleigh Society Report

Peter Hopkinson D.W. Editor spoke at our A.G.M. about the **UPCOMING 100th EDITION** of *Distinctly Winkleigh* and our plans to celebrate this significant milestone.

We will be looking back through our archive tracing its growth from a newsletter in February 2002 [with the launch of The Winkleigh Society] to the bumper editions we produce now in full colour funded by our local businesses who advertise with us.

With contributions from past editors and Chairs of The Winkleigh Society we plan to trace its development and highlight key stories, characters and past covers.

Our other key speaker was Betsy Lill who spoke eloquently about the terror and strain of a lengthy exam process. This had been written about by one of the competition entries from Chulmleigh College which we published in spring edition of D.W. It certainly struck a chord with Betsy.

As Chair I spoke about The Winkleigh Society's chief contribution this year namely promoting local distinctiveness by financing and organising famous woodworker John Butler to rebuild the distinctive Post Office sign he had carved many years ago in tribute to his parents who had run Winkleigh Post Office and where he had grown up.

Pauline Odulinski took the chair for the formal proceedings. Barbara Jenkins is standing down from the committee after many years of service but all the others remain. Many thanks for all her contributions over the years. Barbara will be retaining her interest in the archive which she has meticulously catalogued.

Barry Jenkins from the floor flagged up that he will be standing down as distribution manager and spoke about how he organises the delivery system. He was thanked for his work.

The chair outlined a possible new system of delivering, unpacking and dividing into rounds at The Community Centre where some of the 'posties' could pick them up from there.

Angela Findlay delivered her financial statement and was thanked for all her sterling work and great efficiency.

Philip Griffiths spoke about how he organises and contacts existing and new businesses. He emphasised what is a thriving and ever changing commercial place Winkleigh is. This is the engine that keeps *Distinctly Winkleigh* afloat.

Linda Millership and Catherine Knight had done a wonderful job decking out the tables in the hall with tablecloths, crackers, cheese, chutney, apple juice and mulled cider.

This created a cosy, welcoming and nurturing ambience for the 35 who attended.

Lorne Hamilton and his son Alec (Lorne Hamilton Stage Productions) had wired us for sound with table microphones and a roving mic. for contributions from the floor. *Many thanks to them.*

Future plans? A visit to the met office in Exeter and Woolfardisworthy the ancient hamlet near Bideford transformed by imagination and millions of pounds by the former philanthropic owner from the sale of his giant social media company, Be Bo in the United States.

Interested in these visits? Please ring 01837 83407.

Penny Griffiths and Margaret Miller



SCRIBBLETON

North Devon Business of the Year 2025

Multi-award winning
role play for the
whole family



11 unique role play areas, sensory room,
large central baby area,
café with allergy trained staff,
local produce & homemade bakes,
free onsite parking.
We're open 7 days a week!



Winkleigh, EX19 8DW



scribbleton.co.uk



hello@scribbleton.co.uk



Welcome

TO OUR SUMMER EDITION

Summer has arrived and it is time to light the BBQs, break out the cold drinks, strawberries and cream!

I don't know about you but I think libraries are extremely valuable community assets that need our support. I was therefore delighted to read in Cheryl Cottle-Hunkin's report (see p9) that Devon County Council will support the County's libraries to the tune of £2 million.

I also think that children should be encouraged and if that doesn't work made to turn off their social media and gaming devices, get out of their homes and breathe some fresh air into their lungs. The libraries in Devon are run by a charity Libraries Unlimited which I applaud as it has produced free resources to enable families to connect with nature. Full details of which can be found on p49.

Can I please refer you to our advert for a Distribution Manager on p12? Barry Jenkins our current Distribution Manager after several years in the role is retiring at the end of the year and we need someone to take his place.

Enjoy the summer and we'll be back again with our Autumn Issue in September. If you'd like to submit an article please send it to me on, or preferably before, our copy date of 28th August.

Peter Hopkinson

Editor - peter@hoppy.biz - 07770 821752

The Distinctly Winkleigh Team

Editor: Peter Hopkinson

DW Advertising Liaison:

Philip Griffiths

Publisher: The Winkleigh Society

Graphic Designer:

Becci Arscott - bsharpdesigns.co.uk

Distribution Manager: Barry Jenkins

Regular Contributors: Alan Jacobs, Angela Findlay, Caroline Dennis, Erica Williamson, Jo Coffey, Kim Melhuish, Linda Millership, Margaret Miller, Pat Cunnington, Penny Griffiths, Tim Laarveld, Vicky Samuels, Allan Leighton, Lizzie Marshall, Marcia Butt, Pam Down, Cheryl Cottle-Hunkin, Rachel Duckworth, Stuart Rosamund, Will Slocombe, Winkledown, Tom Robinson, Stephen Middleton, Pauline Odulinski, Rachel Goldsworthy

Distribution Team: Alan Jacobs, Andrew Warner, Anita Hooper, Catherine Knight, David Trenaman, Richard Clarke, Helena Lewis, Jackie Hooper, Jane Beresford-Smith, Jane Hill, Linda Millership, Linda Popham, Monica Lawrence, Philip Griffiths, Roger Bourne, Sue & Andrew Ware, Wendy Oxborough

Proof Readers: Jane Beresford-Smith, Ken & Nicolette Tibbles, Phil Griffiths, Sue Ware, Tania Hopkinson

PRESS SNIPPETS

Okehampton Times 7 May

New zebra crossing enabling children to walk to school safely to St James Primary School in Okehampton is to be installed after years of campaigning by parents.

Crediton Courier 23 April

The latest musical production by Crediton Operatic and Drama Society (CODS) Joseph and the Amazing Technicolour Dreamcoat has been a resounding success receiving standing ovations and rave reviews. Jaimie Page Smith as Joseph was outstanding in this immersive production.

North Devon Journal 7 May

1,265, attacks by out of control dogs recorded by Devon and Cornwall police in 2025. The situation in Devon and Cornwall is similar to that of England and Wales with the number of dog attacks almost doubling since lockdown.

The Moorlander 1 May

A Devon cider-maker in partnership with Bristol University has begun to map the DNA of THOUSANDS OF ANCIENT APPLE TREES across Mid Devon to identify varieties lost to History.

Crediton Courier 30 April

A man from the Winkleigh area has been jailed for 12 years for targeting young girls through snap chat and inciting them to share indecent images. He has been placed on the sex offenders register for life.

North Devon Journal 16 April

The Gigabit Broadband voucher scheme [GBVS] part of a national effort to improve connectivity has been extended until August.

Penny Griffiths

Winkleigh Clubs & Societies

A year ago the booklet of Clubs and Societies in Winkleigh was produced and delivered to all addresses in Winkleigh by local resident Jaqui Sheppard. Jaqui is now producing an updated version for 2026 which will be available in all our local establishments, Post Office, shop, GP surgery etc this summer. Keep your eye out, pick one up and find a club to join - maybe try something new! A great way to stay active and make new friends especially if you are new to our area.





WINKLEIGH

Parish Church News

You never know the full extent of what someone does until they move on. While the Church of England grinds through its endless processes to appoint a new Vicar, the local congregation has to get on with running the Church, as well as doing much of the work towards advertising for a new priest. Paperwork for baptisms, weddings and funerals is of course extensive and is a whole new experience for us. However, we have successfully negotiated everything so far as well as covering all our usual services, using retired clergy. It seems priests never really retire.

Over half of all species on the planet are insects and as David Attenborough has said, if they were to disappear the world's ecosystem would collapse. The churchyard is one of the village's biggest green spaces so we have decided, with expert advice, to let some of the flowers and grasses grow throughout the summer. This will increase the numbers and diversity of insects and the voles, slow worms and hedgehogs which are regularly seen there. We also hope to plant patches of native British wildflowers in due course.

Please bear with us as we refine the paths and if anyone wants access to a grave, please let me know and we will do it. We were late getting started due to the weather and machinery failures. I cannot thank our volunteers enough for all their very hard work in the hot spell in May tidying up for a wedding. By the time you read this, it will hopefully be much tidier and the plan a lot clearer. If anyone would like to help mow, strim, weed or rake, please let me know.

The village is blessed with multiple organisations and groups holding many events round the year, so we have decided to stop changing the Church Fete date to avoid clashes. We are returning to its traditional date of the Saturday before Fair Week, (it used to be on a Tuesday and the school would shut for the occasion – times have changed) so this year it will be on Saturday 11th July at 2.30pm, in and around Church, with stalls, games and cream teas.

'Bear with each other and forgive one another if any of you has a grievance against someone. Forgive as the Lord forgave you.' Colossians 3:13.

If you have any questions please do not hesitate to contact Sue or Jane.

Sue Ware 01837 83526 / 07484 891 567 / sueandware@hotmail.com

Jane Hill 01837 680128 / 07759 323 942 / janeandroger@hotmail.co.uk

Winkleigh Methodist Chapel News

We've just had a period of celebration at Winkleigh Methodist Chapel – Good Friday, Easter Sunday, then Pentecost, all in the last couple of months. We had a lovely outdoor sunrise service on Easter Sunday, then headed back into the warmth for breakfast together. Later that morning, we had a short celebration in the Chapel for those who are not early risers!

It's been wonderful to see so many of the community at Tea & Puddings, with record numbers in recent months. We'll be back for more Tea & Puddings on the 4th Sunday of the month (3-4:30pm), so we hope to see you next on 28th June.

It was lovely to welcome the Hutching family for the baptism of Lenny in April, and we welcomed in several of our local children for our Easter Holiday club the day after. Members of Winkleigh Methodist Chapel are also involved in children and youth events elsewhere in the West Devon Methodist Circuit, including Kree-8 (a monthly youth service of food, games, worship and talks) and our yearly summer camp Stowford, which this year will be in Merton on 3rd-5th July. For more information, go to www.westdevonmethodists.org.uk/youth/activities/stowford-camp

We're already planning ahead for the next celebrations in the Church calendar, so watch this space for Harvest news...

Upcoming events:

- **Kree-8 – Sun 21st Jun, 6:30-8:30pm** @ Madworthy Methodist Chapel
- **Tea & Pudding – Sun 28th Jun, 3-4:30pm** @ Winkleigh Methodist Chapel
- **Stowford Camp – Fri 3rd-Sun 5th Jul** @ Clinton Hall, Merton
- **Summer holiday club – date tbc** but will be advertised on our Facebook page

Lizzie Marshall

All Saints Church *Flower Group*



A good display of Easter Lilies adorned the church together with a wide selection of Easter pictures, Egg shapes, and coloured Crosses from the children of Winkleigh Primary School to view when visiting during the Easter holidays, or during the Coffee morning held on Tuesday 7th April, 2026.

If you are interested in joining our group please contact Linda Millership on 07967125857 or lindamillership@gmail.com



A LOCAL EXPERIENCED SERVICE FOR ALL YOUR NEEDS

**Tree Surgery • Garden Fencing • Stump Grinding
Landscaping • Agricultural Fencing
Fully Insured & Qualified • Free No Obligation Quotes**

01837 83325 | 0777 207 8028

www.mtfcontracting.co.uk

Moortown Farm, Winkleigh, EX19 8HA



Wag & Walk Dog Field

Open 7 days a week

Moortown Farm, Winkleigh EX19 8HA

Tel: 01837 83325

- Secure dog field
- 6 ft high fencing
- Agility equipment
- 6 acres of grassland
- Private off road car park



**For more information and booking go to
winkleighwagandwalk.co.uk**





From your **Devon County Councillor**

Cheryl Cottle-Hunkin

It has been another busy and productive period across Devon, and I wanted to share some updates on the work taking place, alongside some very positive progress being made across the County.

A Positive Direction for Devon

Things are very much on the up at Devon County Council. We have reported a £10 million underspend in our first year as a new administration. This is not because we have cut services or held back spending, but because we are managing resources more effectively and efficiently. Significantly, both Children's and Adults' Services have delivered a surplus, something that very few councils are currently able to achieve. This reflects improved financial discipline, stronger decision making, and a collaborative approach between councillors and officers.

Importantly, these savings are now being reinvested into the services that matter most to residents, including highways, libraries and frontline support.

Investing in Our Roads

Improving our roads remains one of the biggest priorities I hear from residents. I have been out and about locally in the highways van, inspecting issues first hand and working closely with officers to push for improvements. We are investing another additional £4 million into highways, including rapid response repair crews and the continuation of a successful repair trial. This allows teams to fix multiple defects in one visit, making repairs more efficient, longer lasting and better value. It is important to note that the past year has largely been delivered under the previous administration's budget. I am hopeful that with continued investment and a good summer of working conditions, we will begin to see more significant and visible

improvements to our road network in the months ahead. Locally, areas around Ashreigney have been identified for patching work, including sections towards Bridge Reeve. I have also continued to press for improvements on the A3124 at Beaford Moor Straight, which has now seen repair work and is listed for resurfacing in the future.

We are also reinvigorating the Road Warden Scheme. This enables volunteers to carry out small pothole repairs and minor works, which can make a real and immediate difference, particularly on rural roads. If you are interested in getting involved and helping your local community, please do get in touch. All equipment, training and materials are provided by the County Council. While improvements will not happen overnight, this increased investment alongside community involvement will deliver steady improvements over time.

Securing the Future of Our Libraries

There is excellent news for Devon's libraries. Following an extensive consultation with over 25,000 responses, we have approved a £2 million investment to protect and modernise the service.

We will maintain all staffed opening hours, invest in books and digital resources, remove overdue fines from October, expand access through technology and strengthen partnerships with local councils and organisations to integrate more services and make them more resilient as they evolve into community hubs. Libraries are about far more than books. They are trusted spaces that support learning, wellbeing and connection, and this investment ensures they continue to thrive at the heart of our communities.

Supporting Children, Families and Foster Carers

Improving outcomes for children and young people remains our top priority. The latest Ofsted report has recognised real progress, including stronger leadership, improved stability and more effective support for families. Social workers are building better relationships and more children are receiving the right help at the right time. There is still more to do, but we are moving in the right direction and remain fully committed to improving outcomes for our most vulnerable children. We are also continuing to appeal for more foster carers. I recently attended the Hearts and Homes conference, which was both emotional and inspiring. Our foster carers do an incredible job and make a lasting difference to children's lives. It is important to know that fostering does not have to be a long term commitment. Short break and weekend care are also hugely valuable and much needed.

Supporting Rural Communities

As Cabinet Member for Rural Affairs, I continue to raise the specific challenges facing rural Devon.

I have written to the Chancellor regarding rising costs for rural households and businesses, including heating oil, LPG, fuel and fertiliser, which are not covered by the same protections as urban energy supplies. It was also a real honour to welcome Professor Sir Chris Whitty, Chief Medical Officer, to Devon. He is currently preparing his annual report focused on health and wellbeing in rural England,

so this was a valuable opportunity to speak openly about the realities facing our communities. We discussed issues including housing, transport, rural isolation, digital exclusion and the pressures on young people growing up in dispersed areas. I also spoke about the challenges facing farmers, including the increasing isolation that can come with modern farming practices and the importance of community networks such as Young Farmers Clubs!

He was particularly interested in how national measures often fail to capture rural realities. We discussed how indicators such as car ownership can be misleading in rural areas, where a car is a necessity rather than a sign of affluence. He emphasised the importance of more localised data to ensure rural communities are properly understood in national policymaking.

Alongside this, I am very pleased to report that significant work is underway to improve broadband connectivity in the Winkleigh area. There will unfortunately be road closures to enable this work, but we can expect to see real improvements in coverage and speeds over the coming months, which will make a big difference to residents and businesses.

Rural challenges are often hidden in national statistics, but they are very real in our communities and I will continue to push for fairer recognition and support.

Cost of Living Support

The new Crisis and Resilience Fund is now in place, with £8.4 million per year allocated to Devon.

RAY SQUIRE CONTRACTING

WINKLEIGH

**Hay-Making • Grass Mowing • Turning • Rowing Up
Small Bale Baling • Round Bale Baling (Net-Wrap)
Round Bale Wrapping • Flail Topping • Hedge Trimming
Muck-Spreading • Chain Harrowing • Rolling • Mole Ploughing**

GIVE US A CALL 07912 316 679

While welcome, this does represent a reduction in overall funding and a move towards more targeted crisis support. I have raised concerns that rural communities, where costs are often higher, must not be overlooked.

Celebrating Devon's Rural Life

It was fantastic to attend the Devon County Show, which is always a highlight of the year and a wonderful celebration of our rural communities. It was a great opportunity to meet residents, farmers and local organisations. I was particularly pleased to speak with NFU President Tom Bradshaw. We discussed important issues including food security, the impacts of climate change on farming, and the farm inheritance tax. These conversations are vital to ensuring that the voice of rural Devon is heard at a national level.

Supporting Local Communities

There is good news locally, with councillor locality budgets increasing to £10,000 this year to enable more grants to local groups

and projects.

The Youth Grant Scheme has also reopened for a second year, with £160,000 available in the form of small grants to support opportunities for young people aged 11 to 25.

If you are involved in a local group or have a project idea, please do get in touch as I would be very happy to help.

Final Thoughts

I am incredibly proud to be part of a Council that is making real progress. While there is still more to do, we are demonstrating what can be achieved through collaboration, strong leadership and a clear focus on delivering for our communities.

As always, if there is anything I can help with, please do not hesitate to get in touch.

Cheryl Cottle-Hunkin

County Councillor for Torrington Rural & Cabinet Member for Rural Affairs
cheryl.cottle-hunkin@devon.gov.uk
07495 367801

Paul Beer Garden Services Winkleigh

Garden Maintenance

Pressure Washing

Gutter Cleaning

Interior decorating during winter months

Please phone: 01837 83905

Mobile: 07519 921718


Local business happy to support the village



Dog Agility Training

 **Bondleigh & Dodscott**

**1:1 or group training
for all abilities**

 **Rach - 07825 502692**

noragilitytraining@gmail.com



www.noragility.uk



DISTINCTLY WINKLEIGH

is seeking a volunteer to join the team of Winkleigh's popular quarterly magazine and act as

DISTRIBUTION MANAGER

ROLE TO INCLUDE

The overseeing of the distribution of Distinctly Winkleigh to our volunteer 'posties' who deliver the magazine

INTERESTED? GET IN TOUCH

PENNY GRIFFITHS (Chair, The Winkleigh Society)
01837 83407 | penelopegriffiths@gmail.com

Tuition

Qualified patient tutor offers

English and Maths for years 7 - 9, Functional Skills and GCSE

(All exam boards covered)

Home schooling

Arts Award (Bronze, Silver and Gold)

Specialising in dyslexia and other study related concerns

DBS and references available

Tel: 07758 653201

Email: mary@marymoult.net



The PC Geek your computer...
 not working got a virus
 Collecting dust in the corner
call Andy Carnegie

PC repairs
 Health checks
 Upgrades
 Web Design
 Office/admin services
 New and refurbished computers
 Established 20 Years

£65 first hour
 then
£25.00 every 30min



www.tpcgeek.co.uk

Tel: 07903 566861

Email: tpcgeek@hotmail.co.uk



SERVICES FOR SMALLHOLDINGS

Fencing and Hedgerow Services

A range of services to improve,
 enhance and restore
 your green areas



Countryside Management Services
 Working with Nature

Contact: Philip Cribb BSc (Hons) PGCE
07815 133576 • phil@sorrelcms.co.uk



www.sorrelcms.co.uk

Bow, Devon



Winkleigh Parish Council

At the time of writing, we have had a beautiful week of sunshine which raises hopes for a bright summer. The main aim of the Parish Council is to look after the village as best it can and May marks its start of the next year. The Parish Council has reviewed the past year and now looks ahead to supporting a positive future for the parish in the coming year.

Recently, two parish consultations were held, one public and one business, providing people with the opportunity to have their say on the need for an Infrastructure Plan for the parish. This is now leading to an infrastructure survey which is to be distributed shortly to all households in both Winkleigh and Hollocombe. The outcome of the survey is to help inform a short to long-term Infrastructure Plan, the best hope being that this will enable the identification of needs more effectively and facilitate the seeking of funding sources to make the necessary improvements.

Reflecting on the past year, we have had a number of changes in Chair and Vice-Chair from November 2025 with several new councillors taking us to our full quota of 11 team members. We also welcomed our new Clerk, Jane Mills, who took over in April. A new website, managed by Parish Online, has been developed which will provide us with more secure independent support and new emails using the gov.uk domain.

Looking back over the past year, the three committees, namely Environment, People Services, and Finance and Governance, each took on several projects to support the needs of the parish.

The Council's willing volunteers have cared for the hedges, paths and signs in the village and attended to the maintenance of the cemetery and the bungalow, and to the Council's responsibilities with respect to burials and the cemetery. There has been a great deal of work done on improving

and maintaining the benches, and cleaning the road signs around the village. The Council is also proud of the installation of the new bus shelter, which is greatly improving the conditions for people using the bus service. Additionally, several new dog poo bins have been installed.

Parishioners' concerns have been listened to and a key message received related to the need to consider the highways and improve safety on the roads. Another important message was in relation to putting pedestrians' needs at the heart of discussions with the Highways department.

With a view to parishioners' concerns, we have worked with the Highways department on the safety needs and actions in progress, specifically working with the Highways team from Devon and Torridge Council Councils on safety

**LOCAL WINKLEIGH
TAXI**

 **BRAD CARS** 

**4 to 8 Seater Vehicles Available
Local or Long Distance
Airports
Competitive Rates**

**CONTACT WAYNE
07846 389 921
waynejeens@yahoo.co.uk**

LOCAL • RELIABLE • SAFE

concerns and improvements relating to vehicle speed limits/heavy vehicle access/pedestrian safety and traffic flow.

Dates for the Diary

The Community Awards are being held this year at 6.30 – 8.30pm on 10th July 2026 in the Village Hall and the story competition has received nearly 200 entries this year, which is really excellent.

The Community Events Fair is being held at 10am – 4pm on Saturday 12th Sept. at the Sports Centre, showcasing the many local groups, clubs, societies, and social and recreational groups, and providing parishioners with many, varied ideas for engagement during the year.

A new Youth Group is being formed to provide our young people with activities, dates to be confirmed.

There is to be a stall at the Christmas Fair with sponsorship and support from one of our Councillors, who is kindly providing and setting up the large marquee, tables and chairs.

Finally, thanks to all the parishioners who have supported the Council over the past year with many volunteering and attending/assisting our activities.

Thanks also to all of the Councillors and the new Clerk, who have given a great deal of their time and effort in keeping the work of the parish going effectively.

The new Winkleigh Parish Council website is launched in June.

The aim of the Council in 2026-27 is to continue to work on its commitments to the parish and to engage and communicate with the parishioners as effectively as possible.

Thanks to all of the members of the Parish Council:

Councillors: Allen, Jacobs, Keys, Kitchen, Leahy, Odulinski, Phillips, Roth, Squance, Wensley, Wonnacott.

Clerk: Jane Mills and Admin Clerk: Josie Hole.

Pauline Odulinski

Winkleigh VOLUNTEER Service

Volunteers take people to hospital and other medical appointments, collect shopping, take people to the shops, care homes and other **essential journeys**.

Volunteers give their time for nothing but we do charge 50p per mile.

Please give as much notice as you can

Please ring Angie

01837 682616 or 07455365144

THANK YOU

May I take this opportunity to thank all my volunteers for their support and help with this service.

If you're interested in volunteering please give Angela a ring to find out more!



WINKLEIGH SPORTS & RECREATION CENTRE

WHAT'S ON

**MONDAY
& FRIDAY**

SHORT MAT BOWLS 14.00 - 16.30
steve4952@hotmail.co.uk

MONDAY

MONDAY FITSTEPS 18.30 - 20.30
elainecoldman@btinternet.com

THURSDAY

TAI CHI 19.00 - 21.00
jason@taoyinarts.co.uk

FRIDAY

FRIDAY YOUTH CLUB 19.00 - 21.00
Winkleighyouthclub@gmail.com

**EVERY
SUNDAY**

CAR BOOT SALE 10.30 – 12.30
Lindaford168 @btinternet.com

**SEVEN
DAYS A
WEEK**

SNOOKER
winkleighsnookerclub@gmail.com

HIRE & GET IN TOUCH

Hall & Kitchen Hire, Parties, Discos etc. Casual Tennis
& General Enquiries **CONTACT** davidwoollacott27@gmail.com

ADULT FOOTBALL - Contact WFC directly
YOUTH FOOTBALL BOYS & GIRLS - winkleighyfc@outlook.com

Torrige DC's Winkleigh **Play Parks Opening Ceremony**



On Saturday 18th April 2026 two Play Parks for children belonging to and refurbished by Torrige District Council in Winkleigh were officially opened in the presence of Adrian Avery, Community Engagement Project Officer for TDC following a campaign by Clare Lill and Rachel Goldsworthy. Adrian says that although these particular projects were funded by the Rural England Prosperity Fund on this occasion there will be an opportunity to utilise further play funding via local housing development funds (S106) in the near future.

Children, parents and other interested parties met at 10.30am at Westcots Play Park (TP40) now an updated toddlers and young children's Play Park complete with a Rainbow Bench, where the ribbon was cut by Olivia. Elms Meadow Play Park (TP39) was completely refurbished with brand new equipment and a Picnic Bench as requested to bring it up to standard and availability for a much wider age range of children in response to requests from the children and other residents of Elms Meadow. The ribbon was cut by Lily and a mini picnic was held after the 11 o'clock ceremony. Thanks to Zak, Bobs and Wes for their help in the cutting ceremonies and with the décor.

Thank you to Winkleigh Fair Group's Steve Worthington for kindly lending us a couple of traffic cones and some bunting for the event and also thank you for the following donations:

Mid Devon Motors - for sweets and drinks
The Mad Butchers - for chipolatas
The Post Office - for a box of Chocolate Biscuits
The Bakery Stores - (Londis) for ice cream and strawberries in coloured cups

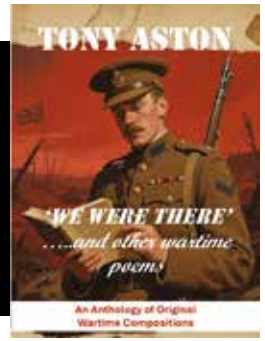
Thank you also very much to 'Nanny' Margaret Bridgman and Winkleigh Youth Club's Helen Wonnacott for deploying the picnic, Adrian for providing ribbon and a Giant pair of Scissors and to all the children, parents and to the kind and positive members of Winkleigh (of all ages) who supported the event.

Finally thanks to Greg Goldsworthy for the images of the Elms Meadow Play Park and to Adrian Avery for the Westcots Play Park image. Let's all work together to keep these upgraded facilities in the best possible condition for the enjoyment of all the children of Winkleigh!

Rachel Goldsworthy

Poet's Corner

Local author and poet Tony Aston has written the following poem about D-Day which is commemorated on 6th June. The poem appears in Tony's published anthology of original war-related poems, "We Were There...and other wartime poems".



D-DAY by Tony Aston

'We're going south,' our orders
decreed, though nobody told us why.
Some said the Germans were coming
across, some said we're all going to die.

As we closed in on the coastal towns,
we met many thousands of others.
What on earth could be waiting ahead
for us and all of our brothers?

Rain and wind welcomed us in, despite
being the first days of June.

We were billeted in homes, in barns
and in trucks.

We hoped we'd hear something soon.

On the fourth, at dawn, we were
briefed by the brass.

We were heading across the sea.
The beaches of Normandy waited
ahead, but they meant nothing to me.

We boarded the ships that night in a
storm.

At five o'clock we'd be gone.
But the weatherman said there was
much worse to come.

To the storm, the Op would succumb.

Twenty-four hours, Ike told us to wait,
in the hope that the rain would recede.

Five on the fifth was the last chance
we had for the Overlord Op to
succeed.

The green light was given, anchors
were raised, we were off to whoever
knew what.

Twelve hours it took, the Channel to
cross, a horrible churn in my gut.

Landing craft were lowered and
manned, hundreds of them all around.

We were to be the first on the beach.
If I didn't get shot, I'd be drowned.

Like lambs to the slaughter we jumped
from the boats.

In seconds, many were dead.
"Keep moving, don't stop!"
an officer screamed.

We didn't have time to feel dread.

We were armed to the teeth, such a dead
weight, trying to wade through the waves.
Bullets whistled, shells blew up, sending
many good men to their graves.

I stepped over bodies and kit in the sea,
the water a deep shade of red.

I managed to reach dry land intact.
My God, I thought I'd be dead.

Many hours went by in a flash before we
began to make up some ground.

The enemy fire was dying back, their
guns were making less sound.

Off the beach, our final attack, the firing
suddenly stopped.

We'd made it, we'd conquered the
foes in the dunes.

Overwhelmed, to the ground I dropped.

I looked back at the beach and couldn't
believe the vision that greeted my eyes.
Hundreds, perhaps more, of bodies and
wounded, a massive cost for this prize.

But this was just the start for us, through
Europe for months we would fight.

Many would make it, many would not,
before victory came into sight.

But this longest day had provided the
key, a foundation for success.

But I would never forget our day
on the beach, and those lost
in the carnage and mess.

On a much lighter note this is a very busy time for the farmers amongst us and the following is quite apposite.

The Farmer's Prayer by John Loveless

Our farmers, whose art's in fields,
Furrowed is thy realm,
Thy harvest come,
Thy work is done,
In earth as it is in cowsheds.
Give us this day our fruit and veg,
And forgive their slow tractors,
As they forgive those who toot behind
them.
Lead us not into set-aside,
But deliver us from weevils,
For thine is the subsidy,
For silos and balers,
From heifer to leather.
Haymen



**TEN ACRES
VINEYARD CAMPING**
WINKLEIGH

Guided Vineyard Tours & Wine-Tasting Every Saturday in the season at 4.30pm. Includes sparkling and still wines. Private group tours also available (min 6 people/the cost of 6 people). **Booking essential** for all tours.

Campsite Ten pitches for tents/small campervans. Glamping also available.

Devon Wine Shack On-site wine shop open Fri - Mon 10am - 7pm. Free local delivery

Open 1st May - 30th September order wine/ gift vouchers and book camping/glamping and Saturday tours on our website.
Contact Esther for info and availability.

tenacrescamping@hotmail.co.uk
(01837) 83892 | tenacresvineyardcamping.co.uk

Winkleigh POST OFFICE

~ Not just a Post Office! ~

Full Banking Service

Deposit Cash & Cheques Business or Private

To Any Bank or Building Society

Plus Withdrawals of Cash

Order & Collect Travel Money

(Euro & US Dollar always in stock

All Other Currencies – 24 hour notice)

Pay Car Tax + Payment of all Bills with a Barcode

Mobile, Gas & Electricity Card / Key Top-up

Wide range of Cards

Full Range of Stationery & Seasonal Goods

Open 8.30 am-5.00 pm Mon-Fri & 9 am-12.30 pm Sat

01837 83427

Owner: Tony Bayley

WINKLEIGH *Village Hall*

Summer is around the corner at last and at the Village Hall changes are afloat.

There have been changes to the Committee again mainly our Treasurer, Tony Kennard, has reluctantly resigned due to work schedules, and we thank him for his diligence during his tenure. Fortunately, we have a new Committee Member, Roger Garnham, who moved to the village in December and has agreed to fill the role of Treasurer for us.

It must be said that we will always welcome anyone to come and join us on the Committee as new ideas are appreciated.

We do have new regular events in the Hall. Namely, dance classes with Taylor Dinnis on Saturday mornings. She runs three distinct classes to cater for all tastes.

Also, we have Karina Smith, who is running piano lessons on Wednesdays and Fridays. Holly Fletcher has taken over the yoga classes on Tuesday mornings as Emily Zarza has stopped running classes due to her expecting a baby and we all wish her well.

Just to complete the line-up, we still have Badminton - Tuesday – 7 - 9pm,

Band Practice – Tuesday - 7 – 10pm

Tap Dancing – Wednesday – 7 – 8pm

Therapeutic Pilates – Thurs – 7:15 – 8.45pm

Therapeutic Pilates – Friday – 9.30am – 12.30

Theatre Jam – Thursday – 4 pm – 6.45 pm.

In other news; we now have a new website www.winkleighvillagehall.uk. At present this is quite basic, but will be updated in the very near future.

I am always available if you have any questions about the Hall, on 07794017790 or winkleighvillagehall@gmail.com, or for booking of the Hall, or the Monthly Market please contact winkleighvillagehallmarket@gmail.com

Allan Leighton

Chair - Winkleigh Village Hall

The University of the Third Age (u3a)

u3a is a UK-wide collection of 1000+ charities that provide the opportunity, for those no longer in full time work, to come together and learn for fun. We give you the chance to develop your interests, share skills, knowledge and experiences whilst making new friends and enjoying yourself. Anyone over the age of eighteen can join and you don't need any qualifications.

Okehampton u3a is a small, friendly, fun loving but growing u3a based in Okehampton but its members aren't just from Okehampton as many live in the surrounding villages. We have several groups covering a diverse range of interests. Our membership year begins in April. Annual fees are £15 reducing to £10 if you join between October and March. However, you can attend three monthly meetings for just £1.00 each meeting before making the decision to join.

For further information see our website <https://okehampton.u3asite.uk>

WINKLEIGH *Friendship Club*



The friendship club and friends have started their trips for 2026 with the first one in April. That was a stop in Honiton and then on to Beer where the sun was shining.

Recently in May we travelled to Padstow Cornwall where we were able to sit outside in the sunshine have a walk ,shop ,lunch and an ice cream

Both trips were enjoyed by all.

Now we look forward to June 9th when we are off again this time to Kernow Mill for a coffee stop and maybe some shopping before finishing the day in Looe.

August 11th is the date for the following trip going to Jacks Patch Garden Centre and on to Teignmouth.

If anyone is interested to travel with us please get in contact with Margaret E Bridgeman on 07817134438.

Picking up in Winkleigh at 9.30 am and always leave the destination at 4.00pm.

There is no trip in July but we have an open meeting on the 9th when a representative from the North Devon hospice will give a talk about all that they do in Barnstaple and care at home.

Everyone is welcome to the large room at the Community Centre at 2.30 entrance is £2.00 which includes tea/coffee and delicious home made cakes also tickets for a raffle will be available. New members are welcome to the club which meets alternate Thursday in the Community Centre 2.30 to 4.30pm

Marcia Butt Chairperson



- Class 4 + 7 MOT Station
- Servicing & Repairs
- Four Wheel Alignment
- Petrol & Diesel sales
- Flogas Gas Cylinder Stockist
- Shop



01837 83334 • info@middevonmotor.uk
www.middevonmotor.co.uk



BESPOAK

FURNITURE & JOINERY



UPDATE • TRANSFORM • RESTORE





Assisted Dying - *A Point of View*

Last year my friend of over half a century was diagnosed with oesophageal cancer. She had for some weeks been suffering from reflux and despite various medications and referral to hospital she was finding it hard to swallow, and then keep food down. Within weeks, she could only take in liquids, which she mostly vomited and in a very short time was diagnosed and was given a terminal sentence. The weeks progressed slowly but the illness galloped along, being unresponsive to chemotherapy which she abandoned as the *palliative, end of life care* was making her worse. She soon lost a dangerous amount of weight, was even regurgitating her own saliva and was sleeping most of the time.

I was a regular visitor as the illness progressed, I saw her suffering at first hand. It was merciless and rapid, so I was not shocked when my dear friend told me she intended exploring the idea of going to Dignitas. "There are few hospice beds in this part of Devon", she said "And I don't want to die in a corridor." I respected her choice and supported her emotionally in executing that decision, whilst all the time fuming that as an individual, she was *lucky* in that she was in a position to even contemplate Dignitas, a drastic and expensive option, when, for most people the costs are prohibitive. I found myself over-whelmed with contradictory emotions: Pleased that she could afford choice and furious that the support in the UK for those dying is a postcode lottery and largely inadequate. Whilst enraged because she would have to go to Switzerland and likely kill herself before she needed to, for fear of being too weak if she left it any later, because it isn't legal to help someone to die in the UK. As a

result, like my friend, many people travel to Switzerland to have an assisted death. Hundreds of Britons have ended their lives at Dignitas, a not-for-profit organisation in Switzerland.

All this played out as the Assisted Dying Bill was going through the House of Lords, although there was nothing *lordly* or *honourable* about the filibustering and delaying tactics employed. A handful of unelected peers who were against the bill tabled over 1,000 amendments, thus making sure the bill collapsed having run out of time. By refusing to change the law. The House of Lords, is ignoring the suffering that many dying people face.

A number of countries have adopted their own laws to enable assisted dying, aside from Switzerland: Canada, some states in America, Netherlands and New Zealand and Australia among others. Scotland and the Isle of Man have also adopted their own laws but as these have to be ratified by Westminster they have yet to be enacted.

The Common's Social Care Committee was tasked with looking at the systems in countries where assisted dying has been legalised and they found no evidence that the opponents of the bill were afraid of, coming to pass. In all cases safeguards are so strong that people are protected and don't forget this is the patient's choice they have to opt in - not opt out. They also found that the safeguards to protect the medical profession were also secure. The Committee found no evidence of greedy families coercing sick people or pushing the elderly towards an early grave and not one country has repealed these laws.

Polling in Britain, indicates that a majority of people support assisted dying including around 75% of medical practitioners, whilst

everyone wants an adequately funded hospice provision for those who don't want to make that choice, my friend may not have followed the course that she took, if she could have been sure of adequate pain relief and a comfortable passing. My view is that as the majority of people support an assisted dying bill, then any future legislation should return as a government bill rather than a private member's bill to allow for proper scrutiny rather than endless amendments tabled; to time the bill out.

Choosing to travel abroad to die was not an easy option, my friend had to face many challenges; financially, physically, emotionally and ethically. She once referred to herself as taking the "cowards way out", from my perspective nothing could have been further from the truth.

Financial Implications:

The fact that one has to go to Switzerland means that even in dying the poor are discriminated against. The average cost to travel to an assisted death is around £20,000. It cost her £4,000 just to register, and £2,000 to bring her ashes back. This is unaffordable for most people. My friend said she felt privileged to be able to afford it, knowing that it was not an option for every dying person, whilst worrying that she was taking money away from her husband's future, potential care needs.

More than half of UK citizens (52%) would personally consider travelling to Switzerland for an assisted death if they were terminally ill, but less than 3 in 10 (28%) would be able to afford it.

Physical Implications:

Being able to make the journey to Switzerland requires a certain level of health and fitness, as you cannot be assisted, so there was immense pressure on my friend to make the journey before becoming too ill or weak to do so. This led her to take the first slot available, therefore sacrificing quality time with people she

cared about, had she been able to remain at home and end her life there.

Choosing to go to Dignitas involved a lot of planning and organisation; doctor's certificates, capacity assessments, travel arrangements, and navigating legal considerations. All this was sapping her diminishing levels of energy during the final weeks of her life when ideally, she would be spending quality time with those who loved her.

Finally, as no one can assist you to die you must have the physical strength to end your life. Usually, you swallow a draft which first initiates sleep, then paralyses, shutting down all bodily functions. In my friend's case because she could not swallow without vomiting, she had a canula put in her arm and she had to push it herself when she was ready.

Emotional Considerations:

My friend was not religious, but many of her family were and she was very afraid that she would be judged. In actual fact those who loved her, irrespective of their religious view point, appreciated and supported her decision even if it was one, they would not choose for themselves. With this unconditional support and love my friend was able to be strong and stoical until the end. For her, having control, the finances and peace of mind of knowing that she would have a painless end was worth the time and trouble and cost of making it happen. I for one found it very hard knowing when her Death Day would be, but had to put aside my own feelings to support her. A few minutes before she died, she texted me that she was ready and thanked me for the love and support I have shown her.

Ethical and Legal Considerations:

Following an assisted death, the Swiss authorities must confirm that there has been no breach of the law. Police, a public attorney, and an independent doctor inspect the body of the person who has

died, review the evidence provided by the organisation and, if necessary, interview the professionals and the loved ones who witnessed the death, almost making the death bed a crime scene. My friends greatest fear was that her husband would be arrested on his return to the UK.

Although there is comfort in knowing someone has ended their suffering, grief is made more complicated by the death happening in a foreign country. When a person, such as my friend, dies overseas, bringing the body home for burial or cremation in the UK leads to the involvement of a coroner. In the case of an assisted death in Switzerland, it is possible that a criminal investigation into the actions of those who helped would follow. As a result, people whose loved one has had an assisted death have to ensure that the cremation takes place in Switzerland, and that they collect their loved one's ashes at a later date or arrange to courier them back home which again costs a lot of money. This limits funeral choices,

prevents people from organ donation and has significant consequences for those with religious beliefs which prohibit cremation, another example of inequality created by our current laws

Following the visceral experience of supporting my friend from diagnosis to her Death Day, I feel strongly that assisted dying should be legal in the UK for all who wish to, if they are judged to have mental capacity and are terminally ill. A change in the law would mean that many dying people could avoid painful, prolonged and undignified deaths, without the cost, pain, trauma and risk of travelling to Switzerland which my dear friend had to endure.

This article is dedicated to her strength, wisdom, courage and stoicism not just when she died but throughout her life, her illness and death. I am grateful for her friendship and thankful that she could afford to choose the death she wanted and not let the illness just take her.

Angela Findlay

S J CARNE

INDEPENDENT FAMILY OWNED FUNERAL DIRECTORS

Est over 60 years • Personal Attention Day & Night
Pre-arranged & Bespoke Funeral Plans Available



Samantha

01837 680199 | samjcarne@outlook.com

Summerhayes, Ingleigh Green, Winkleigh EX19 8AT

WATCH OUT, TICKS ABOUT!



Credit Erik Karits

Ticks are spider like creatures (they have eight legs), but unlike our fly eating friends, ticks feed on animal (and human!) blood! There are 20 species endemic to the UK, and the most common tick to bite your pets and humans are called Ixodes Ricinus, better known as the Castor Bean, Sheep or Deer Tick. Sadly, this species is the main carrier of Lyme's Disease. In this article, we will explain the life cycle of the tick and how bites can be prevented.

There are three stages of their life cycle: Larvae, Nymphs and Adults. The life cycle takes around 3 years to complete and before each stage ends, the tick has to find a host to feed off before it can move on. After a meal, the adult female will lay thousands of eggs at ground level before dying.

DID YOU KNOW?

Ticks are very sensitive to temperature and humidity. This is why they are found often in woodland where the ground is deep with organic material which allows them to regulate.

Ticks are at their most active between April and June, so this time is the highest risk of getting bitten. Activity reduces over summer and then increases during autumn again. In winter ticks stay active but it is much reduced. Ticks depend on wildlife to move from area to area and often need large hosts, such as deer, to be successful in all three stages of the lifecycle.

TICK BITE PREVENTION FOR HUMANS

- Wear light coloured clothing so that ticks crawling on clothing can be

spotted and brushed off

- Walk on clearly defined paths to avoid brushing against vegetation where ticks may be present
- Wear long trousers and long sleeved tops to reduce the direct exposure of ticks to your skin, making it more difficult for them to find a suitable area to attach
- Use an insect repellent that can repel ticks and prevent them from climbing onto clothing or attaching to the skin (always follow the manufacturer's guidance)

TICK PREVENTION FOR YOUR PETS

1. Physical Prevention & Daily Checks

Tick season varies based on regional climates, but wet and warm weather usually extends their activity.

- **Routine Inspections:** After walks through wooded, leafy, or long-grass areas, run a fine-tooth comb and your hands through your pet's fur.
- **Key Hotspots:** Pay close attention to their belly, armpits, groin, under the collar, and around the ears.
- **Safe Removal:** If you find an embedded tick, use specialized Tick Twister tools or fine-tipped tweezers to grasp the tick as close to the skin as possible. Pull straight up without twisting, and safely dispose of it

2.Types of Preventatives

- **Oral Chews:** Tasty, vet-prescribed tablets that work systemically from the inside out. Ticks die quickly upon biting, preventing the spread of diseases. Chews generally provide protection for 1 to 3 months.

- **Topical Treatments:** Liquids applied directly to the skin. These can either kill ticks on contact (so they don't have to bite first) or kill them shortly after attachment. They must be applied monthly, or there is a 3 monthly option available.
- **Collars:** Long-lasting options that continuously release active ingredients across your pet's skin. These are excellent for low-maintenance, extended coverage and typically last 7 to 8 months

The type of treatment you choose really depends on your pet as an individual.

Please chat to our friendly team at West Ridge Vets for advice!



01837 83240
westridgevets.co.uk
Seckington Cross, Winkleigh

DOG WALKING
HOME VISITS
HOUSE SITTING
GROOM/YARD WORK

Fully insured & DBS checked

Contact Laura Sherring-Lucas
07595 249418
winkleighpetcare@hotmail.com

Hatchmoor Vets

7 Devon Units
Hatchmoor Industrial Estate
Torrington, EX38 7HP

01805 624431
www.hatchmoorvets.co.uk

Your friendly local independent vets

TUE-FRI - 9AM - 5PM
SAT - 9AM - 4PM
SUN - 10AM - 3PM
CLOSED MON



PET, HOME & GARDEN SUPPLIES

THE OLD AIRFIELD
WINKLEIGH
EX19 8EZ
NEXT TO JONESY'S CAFE

YOUR ONE-STOP ESSENTIAL SHOP!



✳ WILD BIRD FOOD ✳ PEANUTS ✳ FAT BALLS ✳ TREATS
✳ PET FOODS ✳ LITTERS & BEDDING



✳ TOILETRIES ✳ BIN LINERS ✳ CLEANING PRODUCTS ✳ STATIONERY
✳ COOKWARE ✳ DIY PRODUCTS ✳ PAINTS & BRUSHES ✳ GREETINGS CARDS



✳ COMPOST ✳ BARK CHIPS ✳ FENCE & WOOD CARE ✳ PLANTERS
✳ SEEDS ✳ PLANT FOOD ✳ TOP SOIL ✳ PEST CONTROL ✳ SMOKELESS FUEL



NOW STOCKING...

✳ HERBS ✳ SPICES ✳ DRIED FRUIT ✳ PULSES ✳ FLOUR ✳ OATS

...AND SO MUCH MORE!!!

POP IN AND SEE US - WE'D LOVE TO SEE YOU!

TEL: 01837 680084

Adam^{of} Eden Tree Care



A friendly, family run company aiming to provide a range of high quality arboricultural services to our customers trees.

Services include:

Tree Removals / Dismantles
Tree pruning, reductions, thinning, shaping and dead wood removal
Hedge trimming
Stump grinding
Tree planting

All work is insured to £5million, complies with relevant British standards and is carried out by appropriately trained and equipped professional arborists

CALL NOW for friendly, professional advice and to arrange a **Free no obligation quote**

TEL: 07398268877

Email: adamofedentrees@gmail.com

Check us out on facebook and instagram: [@adamofedentrees](https://www.facebook.com/adamofedentrees)



Peter's Patch, *Dowland*



Two years ago a small group of us started family group sessions at St Peter's Church, Dowland. 'PETERS PATCH' was created to support young families by providing fun filled morning activities with an opportunity for children and adults to get together.

Each session has a theme which is reflected in activities such as baking, crafting, learning about the environment and much much more. In the churchyard we have vegetables growing in boxes, bug hotels and bird boxes.

We believe that using the church

and churchyard in this way encourages children into our community building and it becomes a place of fun and learning while also retaining its respectful history of Christianity.

We regularly have over 30 children and their parents / grandparents attend and to see our church full of young people is uplifting.

We have several families attend from surrounding parishes including Winkleigh. Everyone is always welcome and every session is completely free of charge.

St Peter's Church at Dowland was built in the 12th century so has been welcoming families for 900 years. We feel our ancient history and its traditions can be combined with a more modern day experience of having fun learning sessions and the sound of happy children's voices in our church is what makes PETERS PATCH such a success!

Further information available from Sue Dunn 01805 804351.



All aspects of pest control undertaken for your domestic, agricultural and commercial requirements throughout Devon.

BPCA QUALIFIED • EXPERIENCED FRIENDLY TECHNICIANS • CORRECTLY INSURED

GET IN TOUCH - 0333 772 3766

paul@greenvalleypestcontrol.co.uk | www.greenvalleypestcontrol.co.uk





Winkledown

Dearest Gentle Readers

Are you ever ‘Suited and Booted’? Perhaps for a wedding or another smart occasion? The Gentleman’s Suit was developed by Beau Brummell in the Regency era as a more practical item than the flamboyant Georgian frills and colours. Brummell is credited with introducing the precursor to the modern suit—a tailored coat, waistcoat, and trousers (as opposed to pantaloons) paired with an immaculate cravat. By opting for sharply tailored garments over voluminous, oversized clothes, Brummell’s style set the foundation for what we now recognize as the contemporary suit - whether for men or women. The cravat has evolved into the necktie of today.



Credit to William Heath

With regard to Boots, at some point in the early 1800s Arthur Wellesley, then Viscount Wellington, asked his shoemaker, Mr George Hoby of St James’s Street, London, to make a boot which was easier to wear with the new trousers than the tasselled Hessians. Hoby removed the tassel and cut the boots lower to make them more comfortable for riding.

Even before his great victory over Napoleon at the Battle of Waterloo in 1815, Wellington was on his way to becoming a fashion icon. By 1813, and the victory at the Battle of Vittoria, Wellington’s fame led others to start wearing this new style of boot. They duly became known as ‘Wellingtons’. Later in 1856 Wellington boots were Rubberised and became known as ‘Gum’ Boots but were still titled as ‘Wellingtons’.

The late Georgian/Regency period 1795-1830 was a time of immense global conflict characterised by high-stakes international crises, rapid technological change, significant social unrest and an often overlooked connection between global war and domestic life. Britain was involved in the Peninsular War with Spain and Portugal, 7 Coalition Wars against France including Napoleonic. The War of 1812 against the USA and often simultaneously various campaigns and wars in

Russia, Greece, Denmark-Norway, Persian Gulf, India, Africa, Ottoman Empire, Algiers, Nepal, Ceylon and Ireland.

The conflicts created a sharp contrast between the lives of the wealthy elite and the desperate poverty of the working classes. They also fuelled industrialisation and agricultural change, brought massive National Debt, high Taxation and social unrest. Despite the Victory at Waterloo a general malaise, 'melancholia' was deeply intertwined with the prolonged anxiety-producing effects of war - this mental fatigue, sadness or simply 'lack of spirits' resulting from constant war news, economic strain and social unrest due to rising costs.

The 'Year of No Summer' 1816 followed Wellington's Victory at Waterloo (No doubt people needed those boots!) but more about that in another article.

I will leave you with a quote from a line in 'Waterloo' by Abba:

*"The history book on the shelf
Is always repeating itself"*

Yours affectionately,

Winkledown

Come and enjoy the **SAM'S CIDER** experience and sample some of the finest ciders Devon has to offer. The Sam's Cider shop has a wide range of local produce and gifts.

The **TALLET CAFÉ** welcomes you into our modern and relaxing space offering a wide range of hot foods for breakfast and lunch as well as a range of teas, coffees & cakes.

01837 83560
✉ info@winkleighcider.co.uk
📍 Hatherleigh Road, WINKLEIGH, Devon EX19 8AP

Facebook, TikTok, Instagram

All of our apples come within a 25 mile radius of our site!

SAM'S CIDER
The **TALLET** Café

Situating in the heart of the Devonshire countryside

winkleighcider.co.uk

i Clean Devon Window Cleaning

WINDOW CLEANING, GUTTER CLEARANCE & CLEANING, FACIAS, SOFFITS & CONSERVATORIES.

Call Paul @ 07514 – 740712 for a no obligation quote.



Email paul@icleandevon.co.uk

WWW.FACEBOOK.CO/ICLEANDEVON.CO.UK

Covering Winkleigh/ Chumleigh/ Dolton/ Roborough/ Hatherleigh & surrounding villages.

DO YOU NEED PLANNING?

With over 20 years of experience dealing with local authorities, we guide you through the planning process, from drawings to approval:

NEW BUILDS

EXTENSIONS

LISTED BUILDINGS

PERMITTED DEVELOPMENT

An award-winning, local company delivering
planning, design and build services



TIMBERTEK

07970 504033

mail@timbertek.co.uk • www.timbertek.co.uk • Unit 1G Back Lane, Chulmleigh, EX18 7DQ

UPDATE FROM THE BRITANNIA SAILING TRUST



Hello from the Britannia sailing trust to the good people of Winkleigh Since our last update we have had some very good news. However, first and I think most importantly, the trust would once again like to thank all those in Winkleigh who helped us over the years we were there. It was a very important stage in her restoration, thank you.

Our big news is that after many submissions we were finally successful and were awarded a grant from the heritage Lottery Fund of £196,000. It couldn't have been better timing as we were beginning to scratch our heads a little. We are now able to move ahead smoothly. The Exeter community has been equally as helpful as our Winkleigh friends. It must be the Devonian way. We've now got a good group of volunteers and the Exeter harbour officials have bent over backwards to help us. We've been donated a container and so have a good working space on the quay alongside. Most of the floors are done, the engine and fuel tank are in, not yet connected, the bulkheads are being finished in donated mahogany,

we have employed an experienced boat builder to work along with Sam and as part of the HLF grant we are seeking a project manager. Work is progressing on the masts and boom, and we have all the rigging rope in storage. We now have an Ambassador, Gerry Ward, a man with excellent connections for the role and we are close to having a second patron.

All in all, an uplifting time in our good fortunes.

As you know, we are a volunteer led charity engaged in the restoration of the 1915 gaffer Britannia. We support youth training in traditional skills and raise awareness of threats to the marine environment. But, we do need more help if we are to reach our goal of getting her sailing by 2027, particularly behind the scenes, with marketing and social media. If you feel you can help Britannia make it back to the waves, please get in touch. We would love to hear from you. Our website is britanniasailingtrust.org, or contact Vicki or Sam on 01837 680036, or just pop down to the Quay (Tuesday to Thursday) and say Hello!



North Tawton EX20 2DH
www.ashridge-court.co.uk
01837 880192

Slow-grown, Pasture-fed Beef

Locally raised beef from just £10 per kg
Free local delivery (min 3kgs)

Dry Logs & Sawn Timber

Selection of local native hardwoods
Contact Carolyn on 07872 598 659

Ashridge Great Barn

Weddings (ceremonies & receptions),
events, training days & celebrations
Contact Cat on 01837 352025

GARDEN NOTES

To Coffey



What is a weed? A weed is not a biological or even technical term, it is simply a disparaging term for a plant growing where a gardener doesn't want it. A rose or a dahlia can be a weed if it's not wanted.

Some plants become unwanted because they are too successful at self seeding, often these are the wildflowers who have over many generations adapted to living in the local conditions, the local wildflowers are also part of the local ecosystem so are more likely to have their pollinators available locally. They will also not have had their capacity to reproduce replaced, by human selective breeding, with fancy frilly double petals.

Being a prolific self seeder is not the same as being invasive, that is a specific term with a specific meaning. Where a plant is not a part of the local ecosystem and reproduces to the detriment of the ecosystem and to many other species, like himalayan balsam crowding out all the other riverbank plants so that when it dies down in winter the banks are bare and are eroded, that is invasive behaviour.

A dandelion seeding hundreds of offspring over an untended veg patch is a opportunistic, vigorous wildflower taking advantage of bare earth, and in the process providing food for wild bees

JUNE

- Hoe between vegetable rows regularly to keep down weeds
- Consider in borders which plants are weeds and remove, but enjoy wildflower volunteers
- Be water-wise, especially in drought-affected areas
- Mulching compost on the surface feeds the soil and helps preserve moisture
- Pinch out sideshoots on tomatoes
- Harvest lettuce, radish, other salads and early potatoes
- Position summer hanging baskets and containers outside
- Mow lawns once a week
- Consider leaving patches of grass to grow long and flower for the benefit of insect life
- Plant out summer bedding
- Stake tall or floppy plants
- Prune many spring-flowering shrubs
- Shade greenhouses to keep them cool and prevent scorch
- Top up ponds from water butts if needed

and other insects. Whilst it's unlikely many gardeners will tolerate dandelions in any great number, they can be managed by dead heading before they seed, though it is an onerous task. More easily enjoyed are the small Bellis, the daisies populating many lawns and the stuff of happy childhood memories of making daisy chains.

Now increasingly wildflowers are even being invited into gardens without having to be tweaked away from it's

original form by us. Native bluebells and primroses can be bought at reputable nurseries, increasingly plants like teasels and ragged robin are no longer considered weeds or even wildflowers but are welcome intentional parts of garden plans, invited and valued for their delicate detail, their value to wildlife as food source, habitat and shelter, and their ability to survive and flourish with the minimum of molly coddling - a point that is surely welcome to any gardener.

JULY

- Check clematis for signs of clematis wilt
- Care for houseplant while on holiday
- Water tubs and new plants if dry, but be water-wise
- Deadhead bedding plants and repeat-flowering perennials, to ensure continuous flowering
- Pick courgettes before they become marrows
- Treat apple scab
- Clear algae, blanket weeds and debris from ponds, and keep them topped up
- Order catalogues for next year's spring-flowering bulbs
- Give the lawn a quick-acting summer feed, especially if not given a spring feed
- Harvest apricots, peaches and nectarines

AUGUST

- Prune Wisteria
- Don't delay summer pruning fruits trained as restricted forms
- Deadhead flowering plants regularly
- Watering! - particularly containers, and new plants, preferably with grey recycled water or stored rainwater
- Collect seed from garden plants
- Harvest sweetcorn and other vegetables as they become ready
- Once you harvest your main crop potatoes plant first earlies for a xmas treat
- Continue cutting out old fruited canes on raspberries
- Lift and pot up rooted strawberry runners
- Keep ponds and water features topped up
- Feed the soil with green manures



Florist Shop Café

FLOWERS | COFFEE | CAKE | GIFTS | PLANTS | WORKSHOPS

Open Tuesdays to Fridays 10 - 5pm Saturdays 10 - 2pm
01837 748039 enquiries@catkinblooms.co.uk

Bissetts Garage on Exeter Road Winkleigh Devon EX19 8HW



AIRFIELD

**General Maintenance
& Repair Garage**

- MOTs • Vehicle Diagnostics
- Clutches & Cambelts • Brake & Brake Repair
- General Maintenance • Air Conditioning
- Servicing • Bodywork & Restoration



01837 682 678

www.airfieldgarage.com

Curtains



For all your curtain needs
Alterations, made to order
Fitting and hanging
Call Diane 07534 861473



HC JOINERY

• BESPOKE JOINERY SERVICES •

ARCHITECTURAL JOINERY.
BESPOKE HARDWOOD
OR SOFTWOOD DOORS
AND WINDOWS

HARRY COLGRAVE

01837 83911 • 07517 110 668
hcc2010@hotmail.co.uk



From the Archive

Black Death

An Exmouth salt trader brought it.

We drove him away but it was too late.



It cut through the village faster than a scythe through corn.



Two priests died in one year. The fields were untended, cattle ran free. Nothing could stop the death.

Not prayers, not land, not powers.

Not my herbs or sweet mixtures.

Ring a Ring o' Roses, a pocket full of posies,
atishoo, atishoo, we all fall down.

Vassals left my land without grace or favour.

Change for the better for once!
Many took their freedom
and cast off their feudal chains.

The Winkleigh Community Pageant

War but as far as local history is concerned, the history of the 14th century is about the Black Death.

There was an enquiry held in Winkleigh in 1354 which gives us an idea of how devastated Winkleigh was by the plague, and indeed by a plague pit. Among those who swore oaths were John de Crakeot, senior and junior, and John Kingland. They swore that there was not a manor house in the parish and houses empty which the lord claims the Pestilence and are still empty, and are worth £3.18.7d. There are will rents collected for 14.16.7d and the following rents 2lbs of pepper worth 2/8d. 2lbs cumin worth 4d and a pair of gloves worth 1/2d.

It appears from the rents that about a quarter of Winkleigh's population was wiped out by this disease, which reached England at Wareham in Dorset in a cargo of wool. The West country was very badly affected, even in the middle of the countryside.

It is uncertain in what period the Keynes family obtained the fee of Winkleigh; but they were powerful in this country for many centuries. William Keynes was fined forty shillings in 1315 for seizing a boat, with others, belonging to Stephen de Haccombe, near Keniton, and assaulting his men. William later received a pardon for the death of William Berd. His descendant, John Keynes was high sheriff of Devon in 1399 and many of the family are reported to be interred in the parish church.

Lawrence Molland

'In 1925 a descendant of the Keynes family visiting Winkleigh from Siam (Thailand) to make enquiries about his forebears.'

The 15th Century

Historical records are tricky things. It would be natural to suppose that they get fatter and fatter the further back in time one goes. This is, to a point, true, but there is in England a gap in the records for the 15th century. So we have very little information about this period in England, and next to



nothing in Winkleigh. It was a very prosperous period, mainly owing to the wool trade. There are few mentions of any records of the wool trade in Winkleigh, but it may have left its faint trace in the field names route to Bideford and there was a Guild for the wool-owners of the parish.

Prosperity for many was also due to the consequences of the Black Death, which as now able to work for wages, freeing themselves from the restrictions of the feudal structure. The changes and increased prosperity can be seen by comparing tax documents of the 14th and 16th centuries, but for the 15th, you will be lucky to find anything!

The Winkleigh Book



Quality hardwood logs
cut to order and kindling.
All aspects of low impact forestry.

Call Josh on 01363 83908
or 07792 906258



BRAMHILL

TRADITIONAL SPECIALIST BUILDERS

TRADITIONAL SPECIALIST BUILDERS



Based in Devon, Bramhill Builders have been bringing Listed and Heritage buildings back to their original glory with traditional methods and materials.



- Lime Renders and Plasters
- Roof Renovation and Leadwork
- Insulation of Traditional Buildings
- Painting and Decorating
- Training Courses
- Consultancy

TRADITIONAL BUILDING SUPPLIES



Visit the shop and browse our range of natural paints and sustainable insulations. Chat with our knowledgeable team who will be happy to discuss the benefits of using natural, sustainable products in your home.



NATURAL INSULATIONS



COB BLOCKS



LIME MORTARS

VISIT US AT Unit 1, Allotment Park, Winkleigh, Devon, EX19 8DH

01837 847888 | sales@bramhillspecialist.co.uk | bramhillspecialist.co.uk

WINE COLUMN *by Bruce Evans*

I love Winkleigh, and have lived here for years, the perfect community to raise my children. However lovely it is in the rural heart of Devon, it is also quite nice to occasionally get away and have a bit of a break. I travel a couple of times a year, once as a family and then normally a couple of trips for work. When we go on a family holiday we tend to go to new places where it is always interesting to try the local drinks.

If you are heading away, and feeling adventurous, here are a few suggestions for what to drink. Generally, it is obvious, but try what the locals are drinking. They are the ones who know what is good in the area, and what fits the local cuisine. It is only recently, in wine terms, that we have invented transport, so the local wine will fit the local food. Having said that it is worth being aware that we are northern European. I don't say that because we need more sunscreen, but because we have a certain palette. We generally like supple tannins and rounded plummy fruit in reds and citric notes in our whites. This does not always correlate with the wines grown locally, especially in southern Europe. Places like Portugal and Southern Italy are great as they have held onto their local varieties rather than replanting with the big international grapes, like Shiraz and Sauvignon

The other issue is local styles which don't get over to our shores. I was recently having a lovely time in Puglia and every wine list I looked at had a sweet Primitivo listed. Now I know Primitivo as being a rich slightly sweet dark brooding red but this was something completely different. There was around 20g of extra sugar in the bottle compared to an appassimento version in the UK, and personally was not particularly pleasant. However, if you

don't try you don't learn and I did learn, in a negative way. The win on that trip was walking through a medieval cliff top town and spotting some stainless steel wine tanks through an open door. I wandered in and picked up a very good litre of Negromaro for one euro fifty, (plus fifty cents for the plastic bottle. My wife suggested I go back and speak to them, (the local wine cooperative) about importing some. I explained that once you put it in a bottle, put a label on it, ship it, pay the duty, pay the vat, and make a quid it is around a tenner on the shelf. It was definitely worth a tenner so watch this space. That is one of the joys of wine when travelling, you don't have to pay all those extras.

A couple of things to remember, firstly you can only bring a dozen bottles back duty free, and secondly what tasted amazing under an olive tree in the south of France may not taste the same in front of the fire after a long days work in the dankness of a Devon winter. Happy holidays.



Countryfile

by Jo Coffey

*There was also a Beaver, that
paced on the deck, Or would sit
making lace in the bow: And had
often (the Bellman said) saved
them from wreck. Though none
of the sailors knew how.*

Fit the First: (Hunting of the Snark)
by Lewis Carroll

For over a decade Devon Wildlife Trust have been working on restoring a part of our rural ecosystem that creates an improved wetland habitat, a change that has been benefiting both wildlife and people - that change is the return of the beaver. Where their work slows water flow it reduces erosion, where it creates wetland pockets it eases flooding, pooling helps pollutants settle. Where pools form behind their dams amphibians, fish, birds and plants all have the potential to flourish.

Long thought extinct in the UK, the first beavers were observed on the River Otter around 2008. Initially there was concern, especially when it looked like they were going to not only survive, but breed. Instead of knee jerk removal though it was agreed to study their behaviour and impact first before condemning them. From 2015 to 2020 there was a trial monitoring their impact and how to reduce any issues or concerns caused. The beavers

were captured, health screened and re-released as two family groups with further genetic diversity added later. Importantly all stakeholders had input as the scheme progressed, not just those speaking for the wildlife, or concerned about the natural environment, but people who had to work alongside the beavers, people on whose land they were living. It turned out there was no need to remove them, they were definitely on balance beneficial, not unreasonable given they were originally part of environment, just as otters are.

In 2020 the River Otter Beavers went from being a trial to recognised as resident wildlife, a successfully reintroduced native animal, part of the natural balance. A bit more balance and biodiversity is something our rivers are in dire need of after years of negligence and abuse by water companies (check out Dirty Business on Channel 4 if you doubt this) and the many other challenges they face. Their value may

not have been initially obvious but they demonstrated that they fitted. In 2022 their status was changed from extinct native species to once more being a resident native species.

By February 2025 the news was even better as the existing colonies, including the River Otter Beavers and others, were recognised and plans were put in place to help reintroduce them, under carefully considered

licences, in other areas which will benefit from their presence. Given the inordinate damage we have done to the countries waterways, from building on flood plains, to recurrent dumping of untreated raw sewage, and the increasing levels of industrial and medical pollutants, this is hopefully one of many future steps we can take towards restoring some level of health to our essential waterways.

The Old Parsonage
B&B and holiday lets



Contact Carol Jones

-  www.theoldparsonagewinkleigh.co.uk
-  parsonagewinkleigh@hotmail.com
-  07896 740903



E. KNIGHT
WOODLAND
MANAGEMENT

AIR DRIED SEASONED
HARD WOOD LOGS

Locally Sourced & Seasoned Firewood
Tel: 07875973278



**Your LOCAL
Painting & Decorating
Specialist**

” A High Quality Dependable Service”

**INTERIOR & EXTERIOR WORK
BOTH DOMESTIC & COMMERCIAL**

Reliable - Professional - Tidy

FREE QUOTATIONS & ADVICE

07710 642 441

ash13y@me.com

Letters...



Dear Editor,

It has recently been noted by several members of the general public that some dog owners are becoming very slack in picking-up after their dogs.

Several areas particularly highlighted; village Square, the green area surrounding village hall and various grass verges, the list goes on.

It is a public health and hygiene hazard.

There are many dog waste bins throughout the village they are there to be used, funded by the Parish Council at great expense through our council tax.

Linda Millership.

Dear Editor,

I was very impressed with the article in the Spring DW by Charlotte Pierce. I very much agree with her that the Education system in the UK for decades has been focussed too much on academia and the push for all to attend University at any cost.

In the 1960's at school myself I was streamed into the upper classes because maths was my subject but I was more interested in practical work. Even though my head master told me I was a loser and wouldn't come to much, I did pass the end of school exams with 2 distinctions, 3 credits and 5 passes, yes it was the College Of Preceptors exams (who's heard of them since).

I left school at 15, got an apprenticeship in Tooling Engineering and ended up as a tool designer. Then moved on to new

pastures as an engineer designer, with ICE designing plastic film plant then to an Engineering position supervising the insulating of the Nuclear Reactors internals at Hinkley Point and Dungeness. All due to redundancies never mind that's life and opens up other opportunities.

From there after a period of unemployment (end of Nuclear power in the 1980's) I ended up as a photocopier service engineer then service Manager until I retired.

You see, a career as a plumber, electrician, builder, carpenter or motor engineer can be more rewarding than any academic office bound job.

Just think academics, how do you work without the office? How do you think it was built? Where did your desk come from, the plumbing for your toilet or even your computer and who fixes them? Engineers, I mean the practical dirty hand engineers provide all the necessary things that make this world operate and there are too few of them and not enough credit given to them as in other countries in the world.

One other point I must make. Engineers also are great diyers. We fix just about anything, fix our cars, build things, yes we put up shelves, fix the plumbing and electrics and countless other things that academics just can't or won't do.

Controversial thoughts yes but it makes life so much more interesting, find me at the Village Hall carrying out all the little maintenance jobs that previously had to be paid for.

So congratulations Charlotte and I hope your school will take note.

Allan Leighton

Retired engineer and proud of it.

YOUR COMPLETE ELECTRICAL SERVICE



BEDWELL
ELECTRICAL

**We have more than
28 years of experience
in electrical contracting
throughout Devon.**

- » **Rewiring**
- » **New consumer units**
- » **Minor works**
- » **New installations**
- » **Energy saving and LED**
- » **Fault finding**
- » **Emergency call outs**

We'll take care of it.

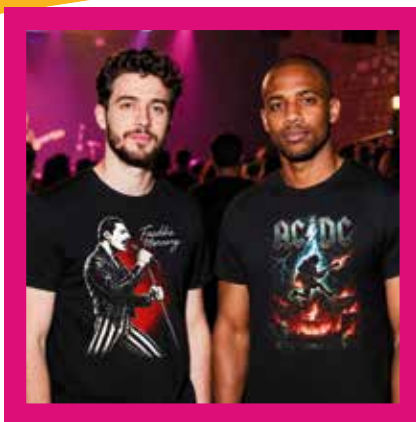
**Call us now for a
free estimate and advice.
Winkleigh - 01837 83900**

Bedwell Electrical
The Airfield, Winkleigh
Devon, EX19 8DW

info@bedwellelectrical.co.uk
www.bedwellelectrical.co.uk



DO YOU NEED Custom Prints?



Bring your designs to life with high-quality Direct-to-Film printing. Perfect for t-shirts, hoodies, tote bags, and more.

- ✓ Vibrant, durable prints that last
- ✓ Fast turnaround – get your order quickly
- ✓ Any design, any quantity
- ✓ Use your design or pick one of our ready to press prints
- ✓ Local service in Winkleigh

Whether it's for your business, event, or personal project, we make custom printing easy.

Get in touch today!

EDGE
STITCH + PRINT

Unit 1E,
Beechlea Industrial Estate,
WINKLEIGH, DEVON, EX19 8DH

hello@edgestitchandprint.co.uk
www.edgestitchandprint.co.uk

TRACEY 07493 506907
ASH 07850 503012

ROBOROUGH REWILDERS



Credit to Sue Samuel at Greycliff

Five years ago my wife Annie and I visited Devon and stayed in an Air B and B between Monkokehampton and Winkleigh. Whilst there someone sent Annie an ad for 10 acres of land just north of Roborough, and 24 hours later the owner had agreed to sell it to us. We lived in Scotland at the time, so this was a bit of a leap of faith.

Back in Edinburgh we ran a landscaping company but I, in particular, wanted to do something to help reverse biodiversity loss and climate change. Here was my chance. In early 2021 we came down with 3 of our landscaping guys. With two diggers we dug lots of ponds, scraped off turf and created lots of hedgerow banks. A baseline survey before we started work found 250 species of plants and animals. The current count is 594. The two fields are full of flower and life. A local farmer brought in brash and rubble to create cover and a neighbour very kindly brings in his Red Devon cattle every autumn to mimic the action of the large, wild herbivores we no longer have in our landscape.

The result is a diverse, layered landscape brimming with life. There are a multitude of dragonflies and damselflies, grass snakes, voles and birds. The 16 ponds fill with tadpoles in the spring and the Red Devons munch contentedly on the oak, willow and grass in the autumn. Added to this, the ephemeral ponds trap flood water and the ground and vegetation fix carbon. The project is a

beacon of hope in a world that currently looks a bit grim.

A few years ago we set up a charity, Roborough Rewilders (www.roboroughrewilders.org) and transferred the land into it. We now help others kick start increases in biodiversity on their own land.

As well as offering advice, we dig ponds, scrape off turf, plant hedgerows and trees, put up owl and kestrel boxes and even construct sky tables for red kites, buzzards and (we hope) sea eagles one day. We also have stands at Agricultural shows and events and give talks and presentations based on the transformation of the land at Roborough. Annie and I now live in the south-west of England which makes things much easier than it was when we had to spend eight hours on the M5 and M6!

Isabella Tree and the Knepp Wilding project showed that rewilding can be done at large scale. We have done it at a much smaller scale and the basic principles can apply to small gardens and all forms of land management. Doing it at any scale is uplifting, rewarding and satisfying.

If you like the sound of any of these ideas, get in touch for advice, practical help on the ground, or just a good chat.

Nick Bengé BSc MAq
Tel: 07734 386 243 or
email nick@roboroughrewilders.org



SPEEDING

Are you concerned about
Speeding in Winkleigh?

Your local Community Speedwatch
Team needs **VOLUNTEERS**

Just an hour of your time can
make a difference.

Please contact
trish.clarkson@gmail.com



COVERING ALL **EXCAVATIONS** &
GROUNDWORKS, BOTH LARGE & SMALL
PROJECTS AT **COMPETITIVE PRICES**

HEDGE-TRIMMING FLAIL & CIRCULAR SAW
TREE SHEARING • FULLY INSURED

CALL MARTIN
07817 464420

mpcontracts.co.uk



SUENO BEAUTY
T R E A T M E N T S

Massage Therapy 🌸 Pregnancy Massage 🌸 Facial Therapy
Holistic Therapy 🌸 Manicures & Pedicures 🌸 BIAB Nails
🌸 Wax/Tinting 🌸 Hybrid Tinting



suenobeauty@outlook.com

SUENO BEAUTY, CASTLE STREET, WINKLEIGH, DEVON EX19 8HU

SCAN HERE
TO BOOK TODAY



Rangemoors

Heating • Cooking • Living

Discover the Heart of Your Kitchen with Rangemoors.

- Outdoor Stoves, Ovens and BBQs
- Woodburning and Multifuel Stoves
- Gas and Electric Fires
- Range Cookers
- Flues, Chimneys and Installations
- Spare Parts and Accessories
- Kiln Dried Logs and Kindling



☎ 01837 680068

✉ info@rangemoors.co.uk

📍 The Airfield, Torrington Rd,
Winkleigh, Devon, EX19 8DW

Scan to explore
our full range →



Nature Without Barriers: Libraries Create Kits to Get Families Outdoors

A beach leaflet with accessibility downloads, stickers to collect as you explore, and stories to listen to outdoors are just some of the new ways families can connect with nature this summer thanks to Libraries Unlimited. The charity that runs the libraries in Devon and Torbay has launched brand-new resources for The Outdoor Explorer Club, a free initiative designed to help children, young people and families get outdoors and enjoy nature together. Created alongside young people with special educational needs and disabilities (SEND), the new resources include a beach leaflet, an activity booklet with sticker sheet, downloadable and audio stories, and clear accessibility information.

Available online and from local libraries across Devon, the resources are designed to make getting outdoors more inclusive and fun for everyone. Families can pick up printed copies of the original trail leaflet, the new beach leaflet and activity booklet, as well as a sticker sheet from any Libraries Unlimited library to begin their adventure.

The new materials have been co-produced with the Champions for Change group and local SEND schools, following a consultation by Devon County Council which highlighted the barriers some children and young people with neurodivergent conditions, special educational needs and disabilities face when accessing nature and outdoor spaces. The project has been funded by Devon County Council.

The project brings together a wide range of partners and organisations, including Sound Communities, Dartmoor National Park, Devon Wildlife Trust, the National Trust and Forestry England,



alongside local councils and accessibility organisations across Devon.

The resources form part of Libraries Unlimited's broader commitment to health and wellbeing, demonstrating the value of co-producing materials that are inclusive by design rather than treating inclusivity as an afterthought. This approach is further strengthened by the option to request braille and easy-read versions of the stories, which are provided free of charge from the ROVIC service at Devon County Council.

The project has also gained national recognition, with Libraries Unlimited invited to share the work at the Libraries Connected Innovation Gathering as an example of innovative, co-produced library services.

Shirin Khaster, Participation Worker SEND, Children's Services, Devon County Council, said: "The Champions for Change group really enjoyed working on this project. It was a wonderful opportunity to collaborate with professionals, share ideas, and learn from each other's unique experiences. From the beginning,



LOCAL LOGS

**DRY SEASONED HARDWOOD
ALL STORED UNDER COVER**

Delivered locally

**COMPETITIVE PRICES
ON DIFFERENT SIZE
LOADS AVAILABLE**

**PLEASE GET IN TOUCH
WITH MARTIN ON
07817 464420
parish@btinternet.com
www.locallogs.net**



*Fresh, Local, Regenerative.
Your Community Farm Shop*

- Fresh Fruit & Veg • Meat • Milk • Bread •
- Zero-Waste Essentials • Pasta • Grains •
- Jams • Sweet Treats • Handmade Goods •

Monday: CLOSED

Tuesday to Saturday: 9:30am - 4:30pm

Sunday: 10am - 2pm

Find us: Station Yard, Eggesford, EX18 7EP

Email us: stationyardfarmshop@outlook.com



01769 740146



Stay up to
date with us!

**LORRAINE - MOBILE FOOT HEALTH
PRACTITIONER - DipCFHP**

**CALL NOW TO BOOK AN APPOINTMENT
07841 719690**

**PROFESSIONAL & FRIENDLY SERVICE, OFFERED IN THE
COMFORT OF YOUR OWN HOME.**

**OVER 10 YEARS EXPERIENCE - ABLE TO TREAT
LONG/THICK/ FUNGAL NAILS, PAINFUL CORNS, IN-GROWING
TOE NAILS, CALLUS, VERRUCAS, CRACKED HEELS, GENERAL &
DIABETIC FOOTCARE**



Fully qualified and insured



FITSTEPS WITH ELAINE
BOW - WINKLEIGH - CREDITON - HIGH BICKINGTON

WHAT IS FITSTEPS?

FitSteps is a Latin & Ballroom dance fitness
workout where no partner is required

- GET FIT**
FitSteps is a great way to get fit without even realising! It's so much fun you won't feel like you are working out but believe us, you will be!
- MEET NEW PEOPLE**
You'll become part of a fabulous group of FitSteppers and be part of our FitSteps community. FitSteps is a great way to socialise and make new friends.
- LEARN THE DANCES FROM STRICTLY**
This is your chance to learn the wonderful dances you see on Strictly without the need for a partner, and in a relaxed fun environment.
- ANYONE CAN DO IT!**
You don't need any dance experience and you don't need to be fit to be able to enjoy FitSteps - it's a dance fitness workout suitable for everyone!

CALL FOR MORE INFORMATION 07733 262475

Monday 6:30pm & 7:30pm, in Winkleigh

Tuesday 7:30pm, in Crediton

Wednesday 4:30pm, in Bow

Friday 10:30am, in High Bickington, & 2pm, in Crediton

**FOLLOW ON FACEBOOK @FITSTEPS WITH ELAINE
OR EMAIL ELAINE@ELMAGS@BTINTERNET.COM**



everyone played a part in creating the accessible leaflet. The final result reflects the group's shared values, voices, and creativity... and shows what can be achieved through teamwork and thoughtful collaboration."

Imogen, a student at Bidwell Brook School, said: "As a wheelchair user, I am very passionate about accessibility and inclusion. These walks will make sure people don't feel left out or shut in. Beth included us at every step. She listened to our opinions on making sure we included Widgit symbols, easy read text, large font size and page numbers. I also like that there is a story with every walk, because it includes another fun element. These leaflets have made it across the county. I know this because I found them at my local children's hospice, which is amazing as more families can get out on these walks."

Alex Kittow, Chief Executive Officer

at Libraries Unlimited added: "It's wonderful that based on the success of the first Outdoor Explorer Club packs, Devon County Council have funded more packs, extending the reach to the beach! Creating these materials as a collaborative process, really understanding the needs of these young people, highlights the crucial role that libraries play in inclusivity in our communities. We hope that we are demonstrating that not only are libraries welcoming, inclusive spaces, but that extends out into the beautiful countryside and beaches we are lucky enough to have in our county."

The new Outdoor Explorer Club resources are available now. To find out more, access digital versions, or pick up your free resources, visit the Libraries Unlimited website or pop into your local library.



Smart Drainage

PREMIER DRAINAGE SPECIALIST

Tank Emptying Services

Sewage Treatment Plants, Septic Tanks, Cesspits,
Grease Traps, Oil Interceptors etc. all emptied.

***We offer reduced rates for you and your neighbours
when you have your tanks emptied at the same time***

01392 576666 | enquiries@smart-drainage.co.uk
www.smart-drainage.co.uk





Chulmleigh College
Nothing but our best

**Choosing a secondary school
for September 2027 entry?**

Come and discover why our
reputation speaks for itself.

Open Evening

Thursday 24th September 2026

Open Mornings

Tuesday 29th September &
Thursday 1st October 2026

Visit our website to find out more!



www.chulmleigh.devon.sch.uk



Southwest Fixings Ltd

Agricultural & Building Supplies



Oils and Adblue
Fencing Materials
Workwear & Boots
Calor Gas
Animal Health
Batteries
Roofing

Animal Feed
Nuts & Bolts
Hydraulic Hoses
Timber
Insulation
Plumbing
Toys

Tools
Tractor & Implement Parts
Fixings & Fastenings
Paint
Household & Garden
Sand & Aggregate

...PLUS MANY MORE!



OPEN TO TRADE & THE GENERAL PUBLIC



Tel: 01837 83492

Email: sales@southwestfixings.co.uk

Website: www.southwestfixings.com

Visit: Beechlea Industrial Estate, Winkleigh, EX19 8DH

Open: Monday - Friday (7:30am - 5pm) Saturday (8am - 12noon)

SAM'S CIDER

— *annual* —

FESTIVAL

Saturday, 1st August 2026

LIVE BANDS

ANTHEMS DJ SET

STALLS

MORE DETAILS COMING SOON

— 3:00PM TO 12.30AM —

Scan for Tickets



WHAT'S ON...

REGULARS

MONDAY

Short Mat Bowls 1:45pm-4:15pm
Sports Hall

Netball Club 7:30pm-8:30pm Sports Hall

FitSteps 6:30pm and 7:30pm
Sports Centre

Yoga 6pm Village Hall

2nd Monday of each month bar January
Church Wives Group, Village Hall
2.30pm-4.30pm

TUESDAY

Yoga 9.45am Village Hall

Free 'Sewcial Crafternoon' at Catkin
Blooms 1:00-3:00pm

Badminton 7:00pm Village Hall

Family History Group every 3rd Tuesday
10.30am-12.30pm

2nd Tuesday of each month Artists'
Critique Group: 7-9pm in North Tawton.
Email ruth.helen.smith@outlook.com
for venue details

Last Tuesday of the month Life Drawing
7-9pm at the Community Centre,
North Tawton.

WEDNESDAY

Mini market & charity coffee morning
9:30am-10:30am Community Centre

Piano Lessons early evening Village Hall

Tap Dancing 7:00pm Village Hall

Kung Fu 6:30pm-8:00pm
& 8:00pm-9:00pm Community Centre

THURSDAY

Winkleigh Art Group 10:00-14:00
Community Centre

Chi Kung 10:30 Village Hall

Tiny Tots 9:30-11:15 Sports Hall

Theatre Jam Village Hall 4pm

Therapeutic Pilates 7:15pm Village Hall

Tai Chi 19:30-21:30pm Sports Centre

FRIDAY

Youth Club 7:00pm-9:00pm Sports Hall

Therapeutic Pilates 9:30am

Short Mat Bowls 13:45-16:15 Sports Hall

SATURDAY

1st Saturday Monthly Market

3rd Saturday of the month 10.00
Portrait Session Community Centre,
North Tawton.

JUNE



19th Movie night at the Village Hall
The Pianist (15)

JULY

10th The Community Awards
6:30-8:30 Village Hall

11th Parish Church Fete 2.30pm

14th-20th Winkleigh Fair

21st 'Magnificent women in their
flying machines' a talk by Sally Smith
2:30pm Fairplace Church, Okehampton.
Admission £1 & further info Dee McVey
01837 658590

AUGUST

1st Sam's Cider Festival

11th The Friendship Club coach trip to Jacks Patch garden centre and Teignmouth

23rd Flower & Produce Show



24th Movie night at the Village Hall
Hamnet (12)

SEPTEMBER

8th The Friendship Club coach trip to Greendale farm shop and Budleigh Salterton

12th Community Events Fair
10:00am to 4:00pm at the Sports Centre



18th Movie night at the Village Hall
Mother's Pride (12)

OCTOBER

13th The Friendship Club coach trip to Strawberry Fields and Tavistock

Chinese Brush Painting Workshops Explore inks, watercolours, brushes and paper Try new techniques.

These workshops are for beginners and the more experienced. The intention is to demystify and inspire confidence with watercolours, combining Chinese brush techniques with traditional materials.

If you would like to try this form of painting come along to one, two or more sessions and enjoy painting!

Winkleigh Community Centre

Fridays	Saturdays
10.00 - 12.00 a.m.	10.00 - 12.00 a.m.
17 July	11 July
14 August	8 August

All materials and equipment will be supplied
£25 per Workshop

Interested?

For more information

Call Mary on 07758 653201 or email mary@marymoult.net



Demonstrations, Bespoke group events
Arts Award Trinity College – Gold, Silver and Bronze

SCHOOL NEWS

Winkleigh Primary School's Report
by Head of Teaching & Learning
William Slocombe



The Spring Term was a busy and exciting one across the school, with children enjoying a wide range of educational visits, sporting events and inspiring learning opportunities.

One of the highlights of the term was the Year 5 residential visit to Skern Lodge. Pupils challenged themselves with adventurous outdoor activities, developed teamwork skills and created lasting memories with their friends. The children represented the school brilliantly and returned full of confidence and enthusiasm.

Sporting success has continued this term too. Our girls' cricket team enjoyed taking part in a tournament at Hatherleigh, showing excellent determination, teamwork and sportsmanship throughout the event. Meanwhile, children from Years 3 and 4 attended a handball festival at QE, where they learnt new skills and enjoyed competing against other local schools.

Across the school, classes have also enjoyed exciting "Hook Days" to launch new topics and inspire learning. Year 5 have focused on our local area, helping children develop a greater understanding and appreciation of the community and environment around them. They have produced and published beautiful versions of the text *Where my Wellies Take me*

by Clare & Michael Morpurgo.

In English lessons, children have explored a range of wonderful texts. Some classes have been captivated by *Clockwork* by Philip Pullman, while younger pupils have enjoyed learning through *The Big Book of Blooms*, which has inspired creative work and discussions about the natural world.

Educational visits have enriched learning across all year groups. Year 5 travelled to We The Curious in Bristol, where they explored hands-on science exhibits and workshops. Year 4 visited Stover Country Park to support their outdoor and environmental learning, while Year 2 enjoyed a fantastic trip to West Town Farm, discovering more about farming and animals. Some of our Year 4/5 children visited Sandy Park, Exeter City stadium for a guided tour too!

Our Reception children also had a wonderful day at the Devon Railway Centre, where they enjoyed train rides, exploration and plenty of excitement.

We are incredibly proud of all our pupils for their enthusiasm, curiosity and positive attitude throughout the term, and we look forward to another busy and successful season ahead. We have lots to look forward to with our Year 6 London residential, Year 4 Bristol residential and Year 3 Camping residential, as well as surfing for our Year 6s!



Phoenix Learning and Care provides tailored education for Key Stage 2 to Key Stage 4 pupils with Special Educational Needs and Disabilities, including those with Social, Emotional, and Mental Health challenges, Autism, or specific learning disabilities.



At Acorn School, every child is valued and supported. We focus on creating an inclusive, compassionate environment where students can overcome challenges and reach their full potential.

Our bespoke curriculum blends academic, social, and vocational learning to help each pupil thrive.

If you're passionate about supporting young people, consider joining our team and making a difference at Acorn School.



Due to our success and growth, we also have a number of vacancies. Scan the QR code to learn more.





Open Book Construction & Developments Ltd

your local builder specialising in :

- Renovations & Extensions
- Maintenance & Repairs
- Period & Listed Buildings

Licata Approved Applicator for :

- Damp Proofing
- Penetrating Damp



01837 83890 / 07541 002017

allan@obcd.co.uk
www.obcd.co.uk

Beneficial boredom?

By Agnes Catling

Boredom. It often screams emotions of dullness, feeling unmotivated and being restless. Boredom is a feeling that most of us despise, but luckily most of us hardly experience it anymore. However, (if we do experience it) it is only for a short period of time, before the brain is distracted again. With access to mobile phones and the internet only improving, immediate distractions are within our clutches: “I feel bored - so I will scroll.” This solution seems perfect: a feeling most of us hate can now be removed; but, it’s not perfect. Far from it.

In fact, boredom is actually beneficial to us.

Boredom takes place when the attention network of the brain disengages, often due to lack of stimulation; this then triggers the DMN (Default Mode Network) into effect. The DMN initiates actions revolving around internal thought, from daydreaming to self-reflection. This can then act as a catalyst for creativity. It forces our brain to go off on a wander! Such cerebral meanderings have the power to initiate imagination. Did you know that the Harry Potter novels’ initial ideas came to J.K. Rowling, when she was bored on a delayed train from Manchester to London in 1990?

Boredom can be a productive state. This can be a time to come up with new ideas and make them happen, or perhaps gain a burst of energy to complete a challenge. Boredom gives us a time to explore our creative side and to generally fill in the ‘gap’ our brain has ‘discovered’.

However, that’s not all. Replacing a short-term feeling of boredom doesn’t just temporarily relieve any restless emotions, it actually generates a habit of getting bored. Every time we pick up our phone, we are provided with a fast dopamine hit (a neurotransmitter and hormone, often known as the ‘feel good’ hormone). This trains our brain that everyday activities we need to complete, are dull and that time on our smartphone is engaging. However, each time we are hit with that dopamine, the dopamine actually becomes less effective. So, something that once filled us with pleasure, becomes the norm, while other activities feel like they are the worst thing you could partake in.

So, to summarise: in a world full of digital stimulation, don’t let yourself see boredom as a negative emotion. View it as a secret power tool, unlockable at any moment, prepared to create what could be the next big thing. Except if it is not, it is still a time to create your own dopamine, do something fun and turn the small things into big things.

As Neil Gaiman said, “You have to let yourself get so bored that your mind has nothing better to do than tell itself a story.” Boredom is beneficial to us all.



How the people you surround yourself with affects your actions

By Ellie Carnegie

Have you noticed how much you change depending on who you're with? The people you surround yourself with don't just entertain us or influence what we talk about they influence how we act. Whether we realise it or not our friends, classmates and family shape our attitudes and daily habits. It might be cracking a joke with a certain group of friends you would never say in front of your family to talking and acting a certain way depending on who you're with. It could be being spending time with positive people with a good work ethic that rubs off on you or on the other hand negative people who might affect us in a more harmful way.

Good influences can strongly influence your actions to be more positive and motivated. For example, if your friends are more motivated and stay on top of homework and revision you are more likely to want to do the same to reach the same standards as them. They can also influence your behaviour towards others, for example, if a friend respects teachers and avoids drama it inspires you to act the same way. This might also make the friend respect you more and support you to push yourself to be the best of your abilities.

Now on the other hand not everyone can find themselves in a supportive healthy relationship with people that influences them in a good way but instead end up taking on bad habits from things like peer pressure or low self-esteem. For example, if you are in a group who decide to do drugs or drink alcohol they might make you feel you

have to do it with them to feel included. This might make you feel they aren't going to like you if you reject them no matter your morals. This overtime decreases your self-esteem and slowly will become easier to break down and influence you to do bad things.

Now you might be asking: Why do we do it?

A big reason we do it is to fit in. This is because of a fundamental psychological need for social connection to feel safe and accepted. It drives away the fear of rejection or isolation which sometimes leads to you moulding yourself for approval for others so you don't feel that isolation that almost everyone has felt at least once which makes us not want to feel again. No matter how much you think this doesn't affect you around 90-95% of people are affected by other people and according to a researcher at Harvard this figure also determines how much your future is affected by these people.

However, we need to remember that we choose who we hang out with and if that is negative people you should take responsibility to reach out and find better people even though that might be hard to do due to that feeling of isolation and abandonment.

Although you might be telling yourself that you can easily go to anyone you know and fit in, ask yourself why. Is it because you're a cool, relatable person to be around or is it because you've moulded yourself so many times people recognize different versions of you and therefore like you.





Hair Salon

01837 83004

Offering all your specialised hairdressing requirements

Colouring - Cutting - Perming

for Ladies, Gents & Children

Opening Tuesday – Friday - 9 am – 5 pm

& the first Saturday of every month by appointment

Exeter Road, Winkleigh EX19 8HW

- Room to rent above the salon (therapy room, office, etc.) –



Tom Wilkins

Electrician



07792 419427



tw.electrical@hotmail.com



Now find **TW Electrical** on Facebook

@tomwilkinselectrical

- ✓ Fully Qualified and Insured Local Electrician
- ✓ Re-wires, kitchens, bathrooms, property extensions and new builds, outside lights, testing, consumer unit upgrades, EV charger installation and other domestic and commercial work undertaken.



Please get in touch for a free quote!



NAPIT



TRUSTMARK
Government Endorsed Quality



City & Guilds

Level 3

Award in the design and installation of domestic and small commercial electric vehicle charging installations

2921-31

wdc
we do
we do counselling



Offering a wide range of Counselling Services, Specialising in Complex Grief & Suicidal Loss, Anxiety, and Hypnotherapy

Sabrina Marsh, Person Centred Counsellor

West Devon Counselling



Offering therapy, remotely, face to face or by telephone, simply scan the QR code

www.westdevoncounselling.co.uk

88clean.

YOUR LOCAL WINDOW CLEANER

- | | | |
|--|---|--|
| <input checked="" type="checkbox"/> Windows | <input checked="" type="checkbox"/> Gutters | <input checked="" type="checkbox"/> Renders |
| <input checked="" type="checkbox"/> Conservatories | <input checked="" type="checkbox"/> Roofs | <input checked="" type="checkbox"/> Patios |
| <input checked="" type="checkbox"/> Fascia Boards
& Soffits | <input checked="" type="checkbox"/> Driveways | <input checked="" type="checkbox"/> Solar Panels |

Give your home the care it deserves
contact 88clean today for a free quote!

☎ 01769 610145 ✉ hello@88clean.co.uk 🌐 www.88clean.co.uk

Ten Tors

Chulmleigh College Pupils Rise to the Ten Tors Challenge



35 Miles Team A



35 miles team B



45 Miles Team

This year, Chulmleigh College proudly entered two teams for the 35-mile challenge and one team for the 45-mile challenge at the renowned Ten Tors event on Dartmoor.

Alongside the College teams, several past and present pupils also took part in 35, 45 and 55-mile teams representing Sea Moor Explore, Exeter College, Army Cadets and Ashton Park School. We would like to congratulate every single participant for the determination, resilience and teamwork they demonstrated throughout this incredible challenge.

A huge thank you goes to Mr Foster for his dedication and commitment in preparing and supporting our teams, and to the incredible volunteers without whom none of this would be possible. We are also extremely grateful to Mrs Whiteley for providing much-needed sustenance to staff, volunteers and pupils over the course of the weekend.

There are many challenging outdoor events in Britain today, but Ten Tors stands apart in both its scale and ambition, as well as its enduring focus on young people. Held annually on

Dartmoor, the event has become deeply embedded in the spirit and identity of the Southwest.

Completing Ten Tors is no easy feat. Teams must navigate demanding terrain, unpredictable weather and long distances while remaining completely self-sufficient. Success requires commitment, endurance, training and grit - qualities all of our participants demonstrated in abundance this weekend.

For many young people, Ten Tors is a life-changing experience and one they will remember forever. Chulmleigh College is immensely proud of everyone who took part and represented the school so brilliantly.

Included in the images of the 2 teams that completed the 35 mile challenge are former Winkleigh Primary pupils Ruby Cowan (35-mile team A, 1st on left), Emily Ilman (35-mile team A, 3rd from left) and George Liebenberg-White (35-mile team B, 2nd from right).

Included in the image of the 45-mile team are Lucy Lassam (2nd from left) and Ryan Snell (2nd from right).

Well done to all involved!

ADVERTISERS INDEX

When responding to adverts please say that you found them in **DISTINCTLY WINKLEIGH**

ACCOMMODATION

41 The Old Parsonage

ART

55 Mary Moulton – Chinese Brush Painting Workshop

ATTRACTIONS

3 Scribbleton

AUCTIONS

ISC Dartmoor Auctions

BUILDERS & BUILDER'S MERCHANTS

38 Bramhill Traditional Building Supplies

58 Open Book Construction & Development Ltd

52 Southwest Fixings Ltd

CAMPING

19 Ten Acres Vineyard Camping

COMPUTER SERVICES

13 The PC Geek

CONTRACTORS

28 Adam of Eden Tree Care

8 MTF Contracting

47 Martin Parish Contracting

10 Ray Squire Contracting

13 Sorrel Countryside Management Services

COUNSELLING

62 West Devon Counselling

CURTAINS

36 Diane Edmeads

DECORATOR

42 Ashman Decorating

DRAINAGE

51 Smart Drainage

EDUCATION

57 Acorn School

52 Chulmleigh Academy

12 Tuition - Mary Moulton

ELECTRICIAN

44 Bedwell Electrical

61 TW Electrical

FESTIVAL

53 Sam's Cider Festival

FITNESS & HEALTH

50 Fitsteps

50 Lorraine Banks – Mobile Foot Health Practitioner

FLORIST

35 Catkin Blooms

FOOD & DRINK

32 Ashridge Court

65 Catkin Blooms

31 Sam's Cider & The Tallet Cafe

BC Seven Stars

FUNERAL DIRECTORS

25 S J Carne

GARDEN SERVICES

11 Paul Beer

HAIR & BEAUTY

61 Changes Hair Salon

47 Sueno Beauty

JOINERY

22 Bespook Furniture & Joinery

26 HC Joinery

LOGS

33 Ashridge Court

41 E Knight Woodland Management

50 Martin Parish

37 Mid Devon Firewood & Forestry

MOTORING

36 Airfield Garage

21 Mid Devon Motoring Company

PEST CONTROL

29 Green Valley Pest Control

PET CARE

11 Noragility - Dog Agility Training

28 Pet, Home & Garden Supplies

8 Wag & Walk Dog Field

27 Winkleigh Pet Care

PLANNING

32 Timbertek

SHOPPING

45 Edge Stitch & Print

28 Pet, Home & Garden Supplies

48 Rangemoors

50 Station Yard Farm Shop

19 Winkleigh Post Office

TAXIS

14 Brad Cars

VETS

27 Hatchmoor Vets

VOLUNTEERS

15 Winkleigh Volunteer Services

WINDOW CLEANERS

62 88 Clean

32 i Clean Devon



DISTINCTLY WINKLEIGH

PUBLICATION INFORMATION

The Winkleigh Society publishes Distinctly Winkleigh quarterly at the end of **March, June, September** and early **December**. Copies are available free of charge to all homes and businesses in the Parish (many hand delivered, others available from village shops).

Please email Articles to articles@distinctlywinkleigh.co.uk and Adverts to adverts@distinctlywinkleigh.co.uk One-off posters for community 'not-for-profit' events are free of charge.

Please ensure that any images you submit are of the highest possible resolution and that all articles and images are copyright-free. All articles submitted for publication may be subject to editing, primarily for space or layout reasons.

Note also that it takes only 500 words to fill each (A5) page without any images.

Please be aware that the views expressed in submitted material are not necessarily shared or endorsed by the newsletter team or The Winkleigh Society. Furthermore the Society does not accept any responsibility for the accuracy of any information, goods or services advertised in adverts or articles.

ADVERTISEMENT RATES & SIZES

1/4 PAGE

62 x 92mm / 128 x 44mm
£16.50 (one edition) £60 (four editions)

1/2 PAGE

128 x 92mm / 62 x 188mm
£33 (one edition) £120 (four editions)

FULL PAGE

148 x 210mm (with 3mm bleed)
£66 (one edition) £240 (four editions)

Rear Cover £110.00 Full page Prime location.

Please supply your adverts as hires PDFs.

COMMITTEE MEMBERS

CHAIR

Penny Griffiths
01837 83407

VICE CHAIR

Margaret Miller
01837 83398

HON. TREASURER

Angela Findlay
07455 365144

HON. SECRETARY

Philip Griffiths
01837 83407

Catherine Knight

Barbara Jenkins

Richard Clarke

Godfrey Rhodes

All residents of Winkleigh Parish are welcome to attend and vote at Winkleigh Society General Meetings. Further information about the Society can be accessed at: www.winkleighonline.com

EDITOR

Peter Hopkinson – 07770 821752

PRINTERS

Deltor Communications Ltd., Saltash

DISTRIBUTION MANAGER

Barry Jenkins – 01837 682909

- FOOD & DRINK
- OPEN 7 DAYS FROM 11AM
- LIVE MUSIC EVERY MONTH
- DOG FRIENDLY



- DARTS
- SPECIAL EVENTS & LIVE MUSIC
- SKY SPORTS & TNT SPORTS
- BEER GARDEN AT REAR

Cocktails & Food

Available 7 days a week!



**New Cocktails now pouring.
Food Theme Nights every
Monday & Tuesday**



01837 83344



High St, Winkleigh EX19 8HX



hello@sevenstarswinkleigh.co.uk



Follow our updates on Facebook www.facebook.com/sevenstarswinkleigh